



FOR LEASE

Rogers Plaza

**950 28TH ST SW # 1150
WYOMING, MI 49509**

Rogers Plaza is located on 28th St, which experiences traffic counts in excess of 43,000 cars per day, providing retailers exceptional brand exposure. The plaza has a tremendous mix of national and local tenants, including Ross Dress for Less (opening soon), Harbor Freight, and AutoZone. A power center that has been serving the Wyoming community for decades, Rogers Plaza has been receiving a face lift over the past few years to help lure upscale tenants as well as patrons. The owners have a goal to improve the community by creating a diverse center with universal appeal, located in Wyoming, Michigan. One of the fastest growing cities in Michigan, Rogers Plaza is proud to be located in close proximity to several developing Class-A townhomes.



Building SqFt	365,572 SqFt
Lot Size (acres)	29.56
Parcel ID	41-17-14-201-016
Zoning Type	Commercial
County	Kent
Frontage	1,615.00 Ft

- Six Ingress & Egress points including one signalized.
- Located in an established commercial corridor boasting well-known tenants such as Ross Dress for Less, Harbor Freight, and AutoZone as well as surrounding tenants Aldi, Dollar Tree, and Family Dollar.
- Lighted Parking Lot with Ample Parking.
- Signage opportunities visible along 28th Street.
- High-performing intersection with over 43,000 vehicles per day.
- 5-mile population of 280,661
- Below Market Rents.

Spigel Properties

70 N.E. loop 410, Suite 185
San Antonio, TX 78216

Office: 210-349-3636



LINDSEY NUSSLE

Director of Acquisitions & Research

Direct: 210-801-8517

lindsey@spigelproperties.com

FOR LEASE

Rogers Plaza
 950 28TH ST SW # 1150
 WYOMING, MI 49509



SPACE	SPACE USE	LEASE RATE	LEASE TYPE	SIZE(SF)	TERM
#1010	Retail	\$ 12.00 SF/Yr	NNN	2,700 SF	Negotiable
#1012	Retail	\$ 12.00 SF/Yr	NNN	3,728 SF	Negotiable
#1042	Retail	\$ 12.00 SF/Yr	NNN	4,876 SF	Negotiable
#968	Retail	\$ 14.00 SF/Yr	NNN	6,443 SF	Negotiable
#996	Retail	\$ 12.00 SF/Yr	NNN	2,040 SF	Negotiable

Spigel Properties

70 N.E. loop 410, Suite 185
 San Antonio, TX 78216

Office: 210-349-3636



LINDSEY NUSSLE

Director of Acquisitions & Research

Direct: 210-801-8517

lindsey@spigelproperties.com

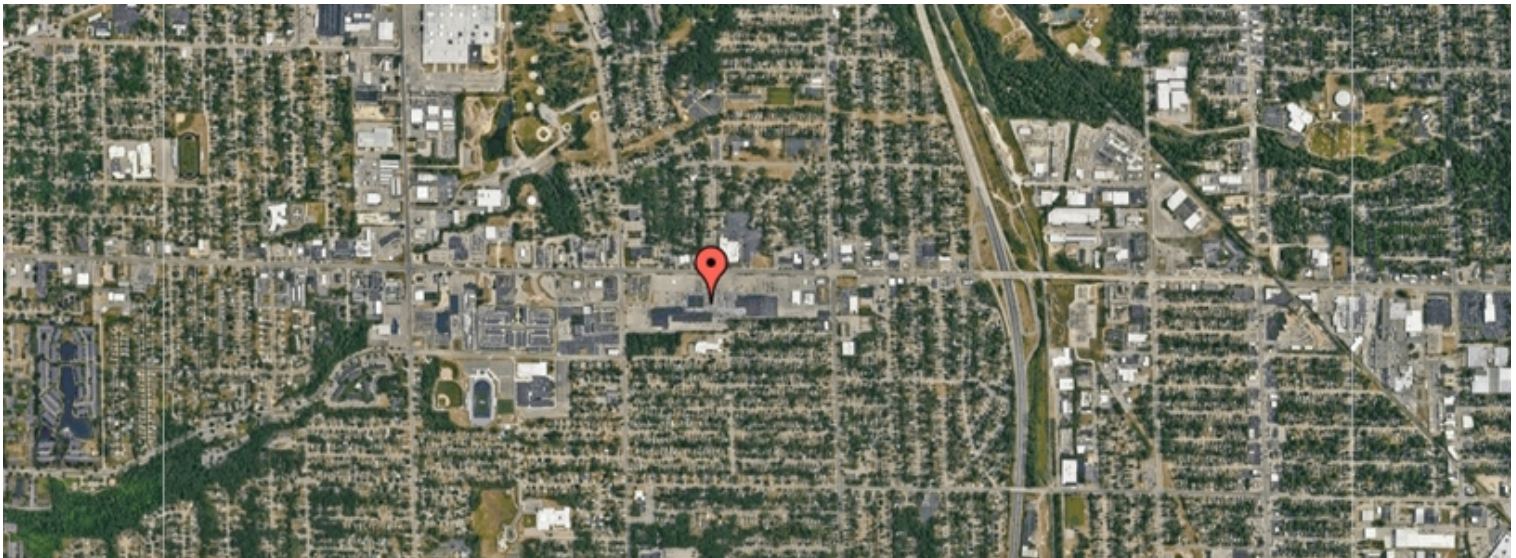
FOR LEASE

Rogers Plaza
950 28TH ST SW # 1150
WYOMING, MI 49509

POPULATION	1 MILE	3 MILE	5 MILE
2000 Population	13,763	107,328	263,789
2010 Population	13,681	101,384	257,125
2022 Population	14,880	107,893	280,661
2027 Population	15,192	108,500	283,699
2022-2027 Growth Rate	0.42 %	0.11 %	0.22 %
2022 Daytime Population	14,339	104,326	302,751

2022 HOUSEHOLD INCOME	1 MILE	3 MILE	5 MILE
less than \$15000	523	3,411	9,661
\$15000-24999	499	3,642	9,382
\$25000-34999	701	4,207	9,976
\$35000-49999	718	6,361	15,143
\$50000-74999	1,280	8,920	22,992
\$75000-99999	989	6,190	15,759
\$100000-149999	695	4,415	15,944
\$150000-199999	34	866	5,137
\$200000 or greater	76	641	4,714
Median HH Income	\$ 54,262	\$ 53,205	\$ 58,572
Average HH Income	\$ 65,404	\$ 66,945	\$ 80,325

HOUSEHOLDS	1 MILE	3 MILE	5 MILE
2000 Total Households	5,346	37,911	98,581
2010 Total Households	5,103	35,784	97,228
2022 Total Households	5,514	38,654	108,707
2027 Total Households	5,629	38,947	110,206
2022 Average Household Size	2.64	2.77	2.55
2022 Owner Occupied Housing	3,533	23,514	63,773
2027 Owner Occupied Housing	3,693	24,171	65,872
2022 Renter Occupied Housing	1,981	15,140	44,934
2027 Renter Occupied Housing	1,936	14,776	44,334
2022 Vacant Housing	145	1,677	6,591
2022 Total Housing	5,659	40,331	115,298



Spigel Properties

70 N.E. loop 410, Suite 185
San Antonio, TX 78216

Office: 210-349-3636



LINDSEY NUSSLE

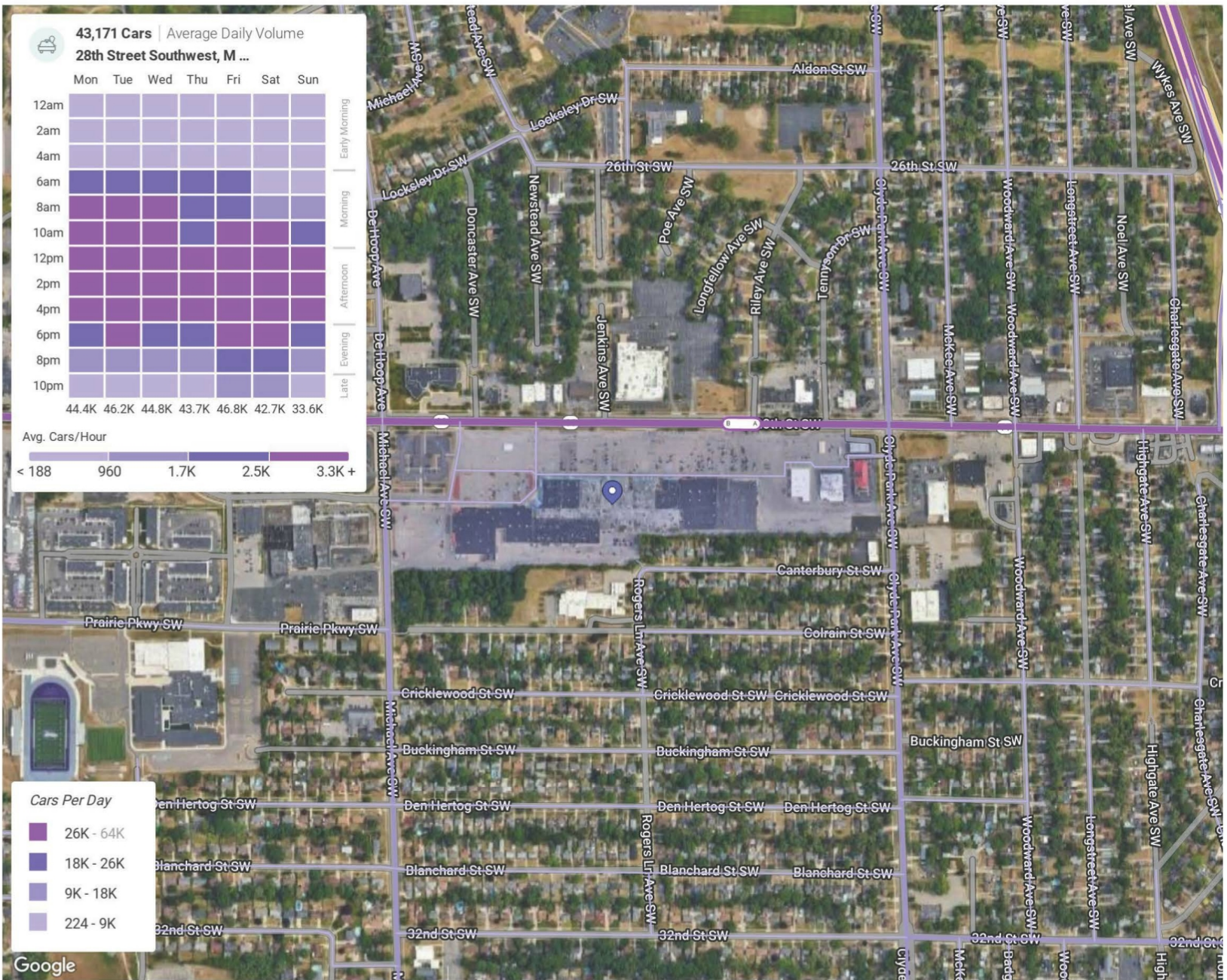
Director of Acquisitions & Research

Direct: 210-801-8517

lindsey@spigelproperties.com

FOR LEASE

Rogers Plaza
 950 28TH ST SW # 1150
 WYOMING, MI 49509



May 1st, 2022 - Apr 30th, 2023
 Data provided by Placer Labs Inc. (www.placer.ai)



Spigel Properties

70 N.E. loop 410, Suite 185
 San Antonio, TX 78216
 Office: 210-349-3636



LINDSEY NUSSLE

Director of Acquisitions & Research
 Direct: 210-801-8517
 lindsey@spigalproperties.com

FOR LEASE

Rogers Plaza
950 28TH ST SW # 1150
WYOMING, MI 49509



ABOUT WYOMING

Wyoming is a city in Kent County in the U.S. state of Michigan. The population was 76,501 according to the 2020 census. Wyoming is the second most-populated community in the Grand Rapids metropolitan area (1,091,620 total pop.) and is bordered by Grand Rapids on the northeast.



CITY OF WYOMING

AREA

CITY	24.9 SQ MI
LAND	24.7 SQ MI
WATER	0.2 SQ MI
ELEVATION	643 FT

POPULATION

POPULATION	76,501
DENSITY	3,092.07 SQ MI

Spigel Properties

70 N.E. loop 410, Suite 185
San Antonio, TX 78216

Office: 210-349-3636



LINDSEY NUSSLE

Director of Acquisitions & Research

Direct: 210-801-8517

lindsey@spigelproperties.com