

NATIONAL BUILDING

Beautifully renovated classic timber and brick building in downtown Seattle

1008 WESTERN AVENUE, SEATTLE, WA



JEFF HUNTINGTON 206.296.9619 | jeff.huntington@kidder.com

JIM LOVSTED, CPM 206.398.2271 | jim.lovsted@kidder.com

TOP TWO FLOORS SUITES 500 & 600

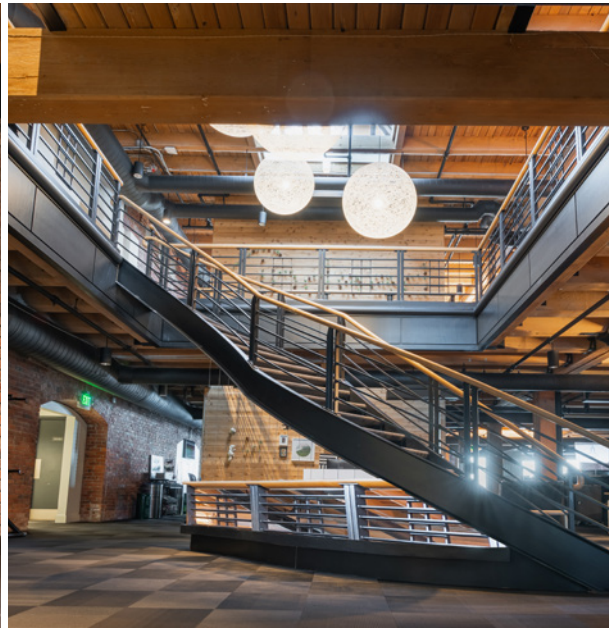
- Suite 500 22,549 RSF
 - Mostly open plan w/ private shower
- Suite 600 22,568 RSF
 - Mostly open plan w/ meeting rooms/phone rooms
 - Can be combined for 45,117 RSF
- Flexible demising options on full floors
 - Half floors, ~11,500 RSF are like full floors
 - Private bathrooms & elevator lobby exposure
- Either can be demised to approx. 6,500
- Mix of open space & privates/conference rooms
- Views of Elliott Bay
- Internal stairwell

FEATURES

- Creative brick & timber space
- Easy access to nearby public transportation
- Walking distance to the new Seattle Waterfront, ferry terminals, Pike Place Market, CBD and Pioneer Square
- On-site storage, secure bike room and building shower
- Operable windows

KIDDER.COM

This information supplied herein is from sources we deem reliable. It is provided without any representation, warranty, or guarantee, expressed or implied as to its accuracy. Prospective Buyer or Tenant should conduct an independent investigation and verification of all matters deemed to be material, including, but not limited to, statements of income and expenses. Consult your attorney, accountant, or other professional advisor. All Kidder Mathews designs are the sole property of Kidder Mathews. Branded materials and layouts are not authorized for use by any other firm or person.



AVAILABLE SPACES

500

SUITE

+22,549

SQUARE FEET

Full Floor can be demised

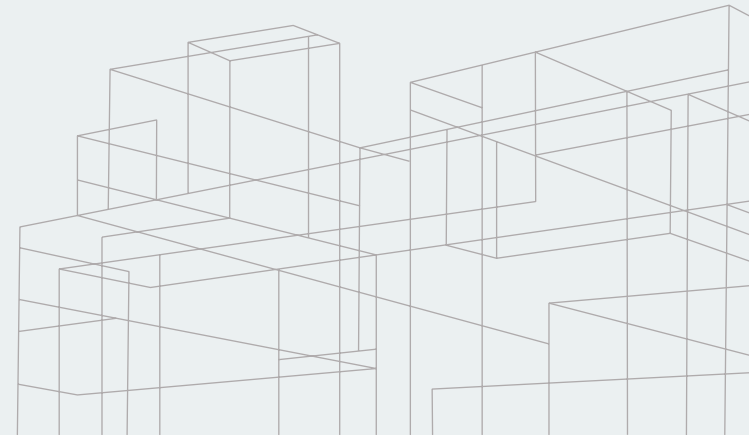
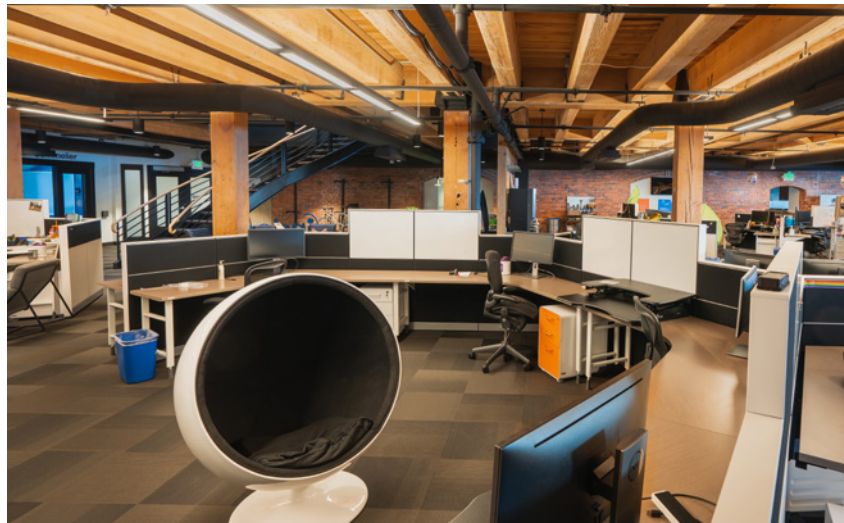
600

SUITE

+22,568

SQUARE FEET

Full Floor can be demised



KIDDER.COM

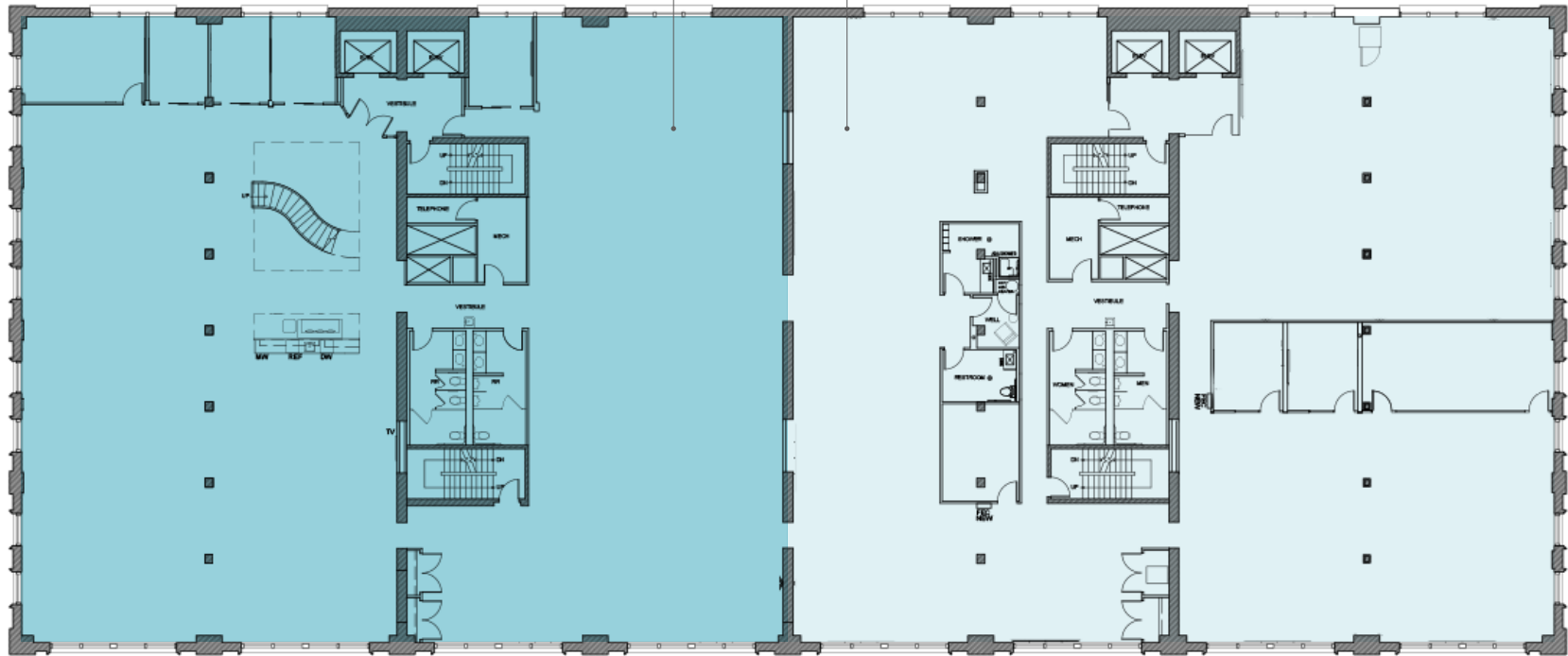
This information supplied herein is from sources we deem reliable. It is provided without any representation, warranty, or guarantee, expressed or implied as to its accuracy. Prospective Buyer or Tenant should conduct an independent investigation and verification of all matters deemed to be material, including, but not limited to, statements of income and expenses. Consult your attorney, accountant, or other professional advisor. All Kidder Mathews designs are the sole property of Kidder Mathews. Branded materials and layouts are not authorized for use by any other firm or person.

SUITE 500

THE ENTIRE FLOOR SUITE IS ±22,549 RSF

NORTH SUITE 500
±11,275 RSF

SOUTH SUITE 500
±11,275 RSF



KIDDER.COM

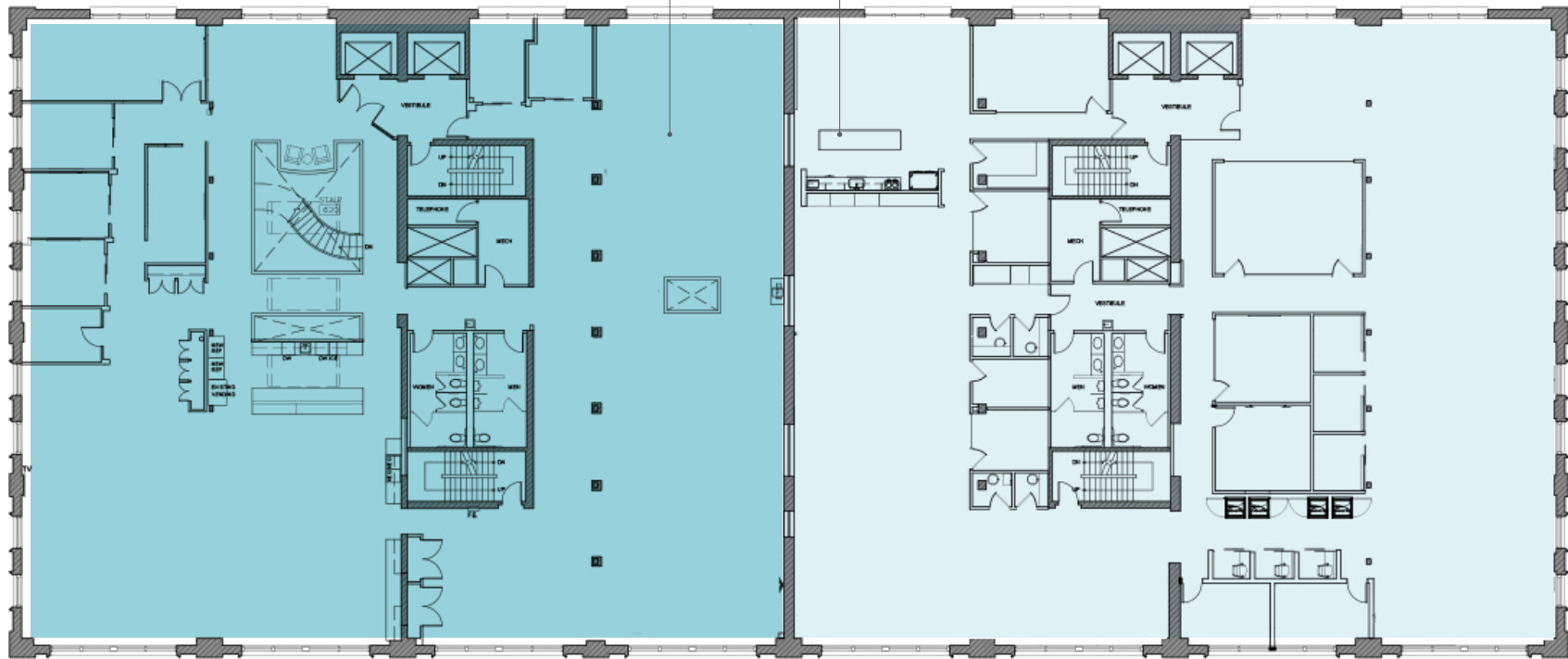
This information supplied herein is from sources we deem reliable. It is provided without any representation, warranty, or guarantee, expressed or implied as to its accuracy. Prospective Buyer or Tenant should conduct an independent investigation and verification of all matters deemed to be material, including, but not limited to, statements of income and expenses. Consult your attorney, accountant, or other professional advisor. All Kidder Mathews designs are the sole property of Kidder Mathews. Branded materials and layouts are not authorized for use by any other firm or person.

SUITE 600

THE ENTIRE FLOOR SUITE IS $\pm 22,568$ RSF

NORTH SUITE 600
 $\pm 11,284$ RSF

SOUTH SUITE 600
 $\pm 11,284$ RSF



KIDDER.COM

This information supplied herein is from sources we deem reliable. It is provided without any representation, warranty, or guarantee, expressed or implied as to its accuracy. Prospective Buyer or Tenant should conduct an independent investigation and verification of all matters deemed to be material, including, but not limited to, statements of income and expenses. Consult your attorney, accountant, or other professional advisor. All Kidder Mathews designs are the sole property of Kidder Mathews. Branded materials and layouts are not authorized for use by any other firm or person.