



777 Tower Sublease

5,993 SF | Term Thru July 31, 2025

777 S. FIGUEROA ST, SUITE 2150
LOS ANGELES, CA 90017

Rental Rate: \$29.00 FSG

Occupancy: 30 Days

Parking: Negotiable

Property Highlights:

- Stunning 21st Floor Views
- Convenient Access to the 110-Fwy and 7th St Metro Center Station
- Located at FIGat7th open-air shopping mall



For information, please contact:

Will Adams

Executive Managing Director
t 213-596-2232
will.adams@nrmk.com
CA RE Lic. #01131941

Deanna Linck

Brokerage Services Specialist
t 818-397-3208
deanna.linck@nrmk.com
CA RE Lic. #02180961

nrmk.com

NEWMARK

Although all information furnished regarding property for lease has been obtained from sources deemed to be reliable, that information has not been verified by Newmark and no express representation is made nor is any to be implied as to the accuracy thereof. That information is subject to errors, omissions, change of price, rental or other conditions, prior sale, lease or financing, or withdrawal without notice and to any special conditions imposed by Newmark's client. The lessee must independently verify any information on which it intends to rely. Corporate License #1355491



For information, please contact:

Will Adams

Executive Managing Director
t 213-596-2232
will.adams@nrmk.com
CA RE Lic. #01131941

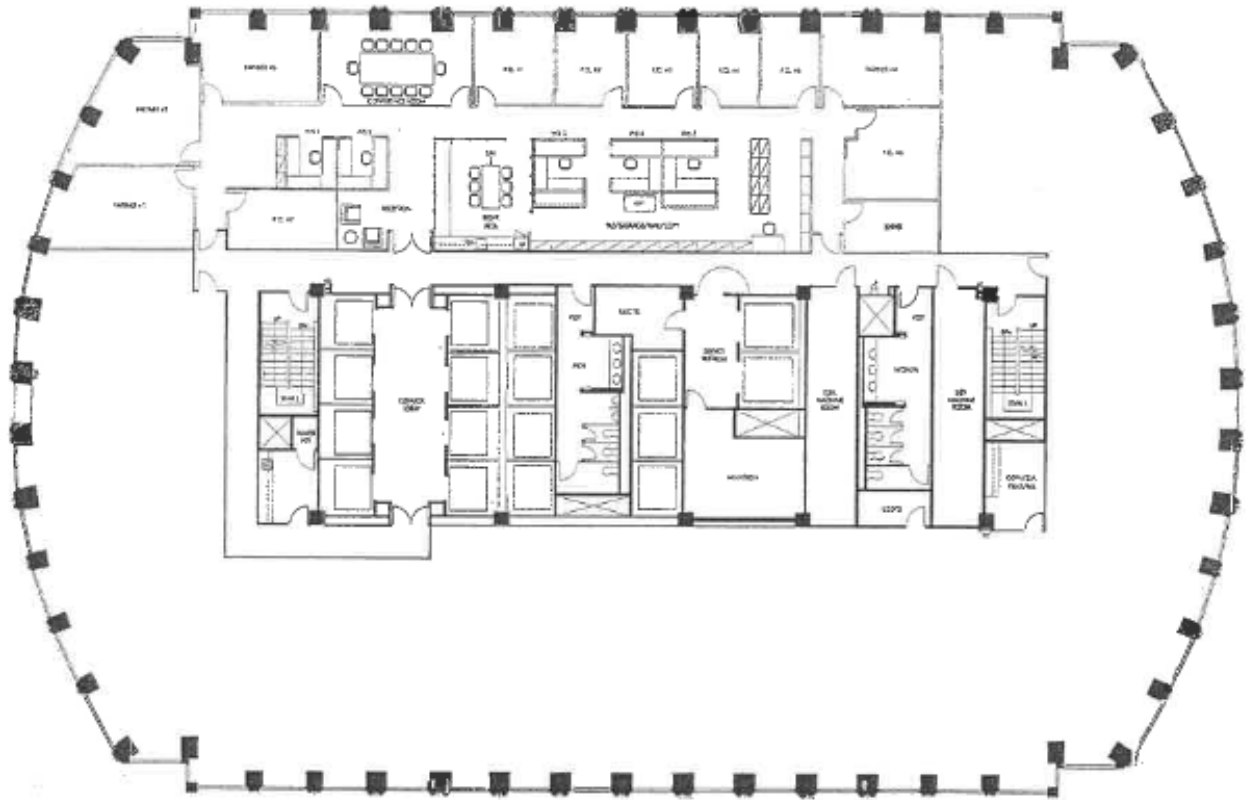
Deanna Linck

Brokerage Services Specialist
t 818-397-3208
deanna.linck@nrmk.com
CA RE Lic. #02180961

nrmk.com

NEWMARK

Although all information furnished regarding property for lease has been obtained from sources deemed to be reliable, that information has not been verified by Newmark and no express representation is made nor is any to be implied as to the accuracy thereof. That information is subject to errors, omissions, change of price, rental or other conditions, prior sale, lease or financing, or withdrawal without notice and to any special conditions imposed by Newmark's client. The lessee must independently verify any information on which it intends to rely. Corporate License #1355491



– 10 Private Offices

– 5 Workstations

– 2 Conference Rooms

– 1 Kitchen/Break Area

For information, please contact:

Will Adams
Executive Managing Director
t 213-596-2232
will.adams@nrmk.com
CA RE Lic. #01131941

Deanna Linck
Brokerage Services Specialist
t 818-397-3208
deanna.linck@nrmk.com
CA RE Lic. #02180961

nrmk.com

Although all information furnished regarding property for lease has been obtained from sources deemed to be reliable, that information has not been verified by Newmark and no express representation is made nor is any to be implied as to the accuracy thereof. That information is subject to errors, omissions, change of price, rental or other conditions, prior sale, lease or financing, or withdrawal without notice and to any special conditions imposed by Newmark's client. The lessee must independently verify any information on which it intends to rely. Corporate License #1355491

NEWMARK