

1422 EUCLID AVENUE
CLEVELAND, OHIO

The Hanna Building



CLEVELAND'S HISTORIC PLAYHOUSE SQUARE DISTRICT



OWNED BY PLAYHOUSE SQUARE
Participating in economic development in Greater Cleveland
CRESCOREALESTATE.COM/PLAYHOUSESQUARE

GE CHANDELIER NORTH AMERICA'S LARGEST OUTDOOR CHANDELIER



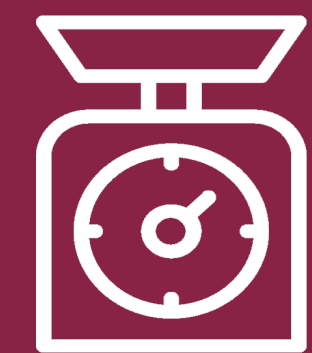
4,200
NUMBER OF
CRYSTALS



MORE THAN
1,000,000 GUESTS
EACH YEAR

1,000+

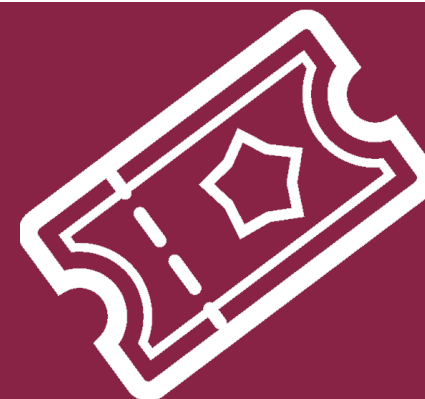
ANNUAL EVENTS TAKE PLACE
IN PLAYHOUSE SQUARE
DISTRICT



8,500
LBS



LARGEST PERFORMING
ARTS CENTER IN
THE COUNTRY
(OUTSIDE OF NEW YORK)



45K+
TICKETHOLDERS
ANNUALLY



20'
TALL



THE HANNA BUILDING



ADDRESS

1422 EUCLID AVENUE
CLEVELAND, OHIO 44115

LEASE RATE

\$16.00-\$18.00/SF FULL SERVICE GROSS

BUILDING SQUARE FOOTAGE

337,000 SF

AVAILABLE SQUARE FOOTAGE

UP TO 48,000 SF

OF FLOORS

SIXTEEN (16)

SECURITY

24/7 MANNED SECURITY GUARD

PARKING

ATTACHED GARAGE

BUILDING FACTOR

10%

YEAR BUILT

1921

YEAR REFURBISHED

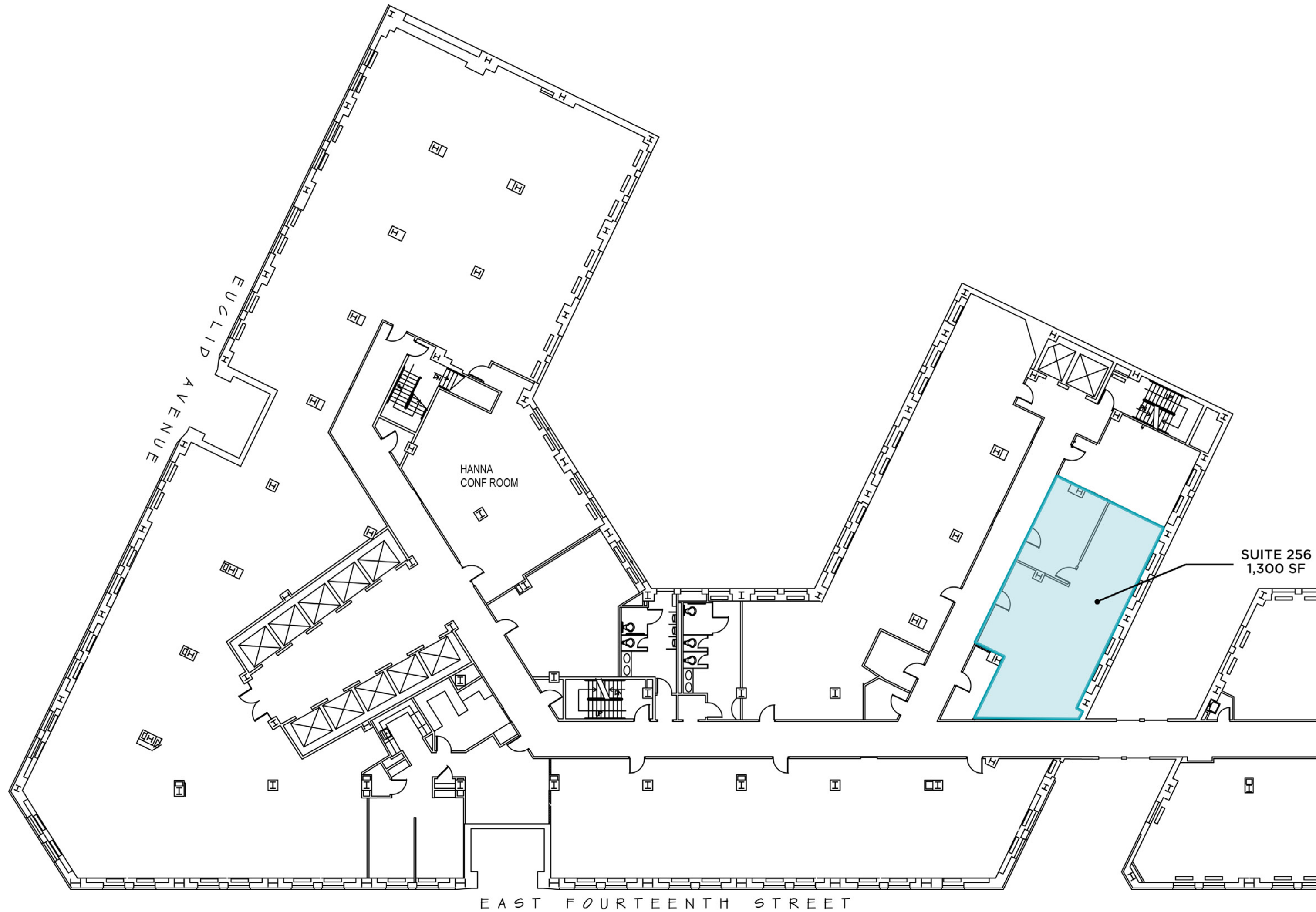
2000



The Hanna Building has an array of flexible opportunities whether you're a non-profit looking for a small home-base office or a Fortune 500 corporation looking for your new HQ. Come experience the historic feel of the neighborhood while working in the most modern office suites the Playhouse Square District has to offer.



FLOOR PLANS SECOND FLOOR

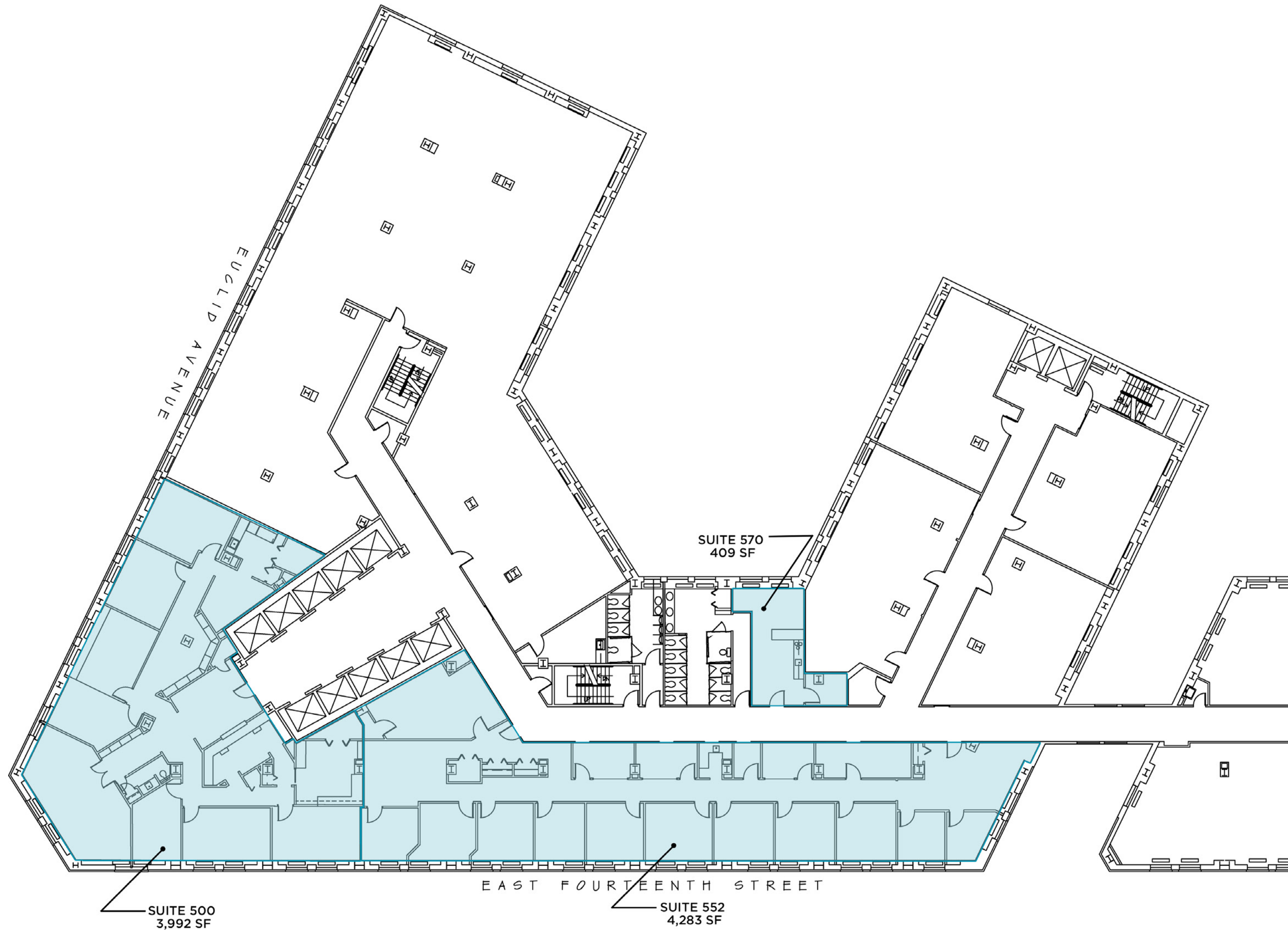


SECOND FLOOR AVAILABILITIES

- Suite 256 - 1,300 SF



FLOOR PLANS FIFTH FLOOR



FIFTH FLOOR AVAILABILITIES

- Suite 500 - 3,992 SF
 - Suite 552 - 4,283 SF
 - Suite 570 - 409 SF
- 8,275 SF Max. Contiguous



FLOOR PLANS SIXTH FLOOR

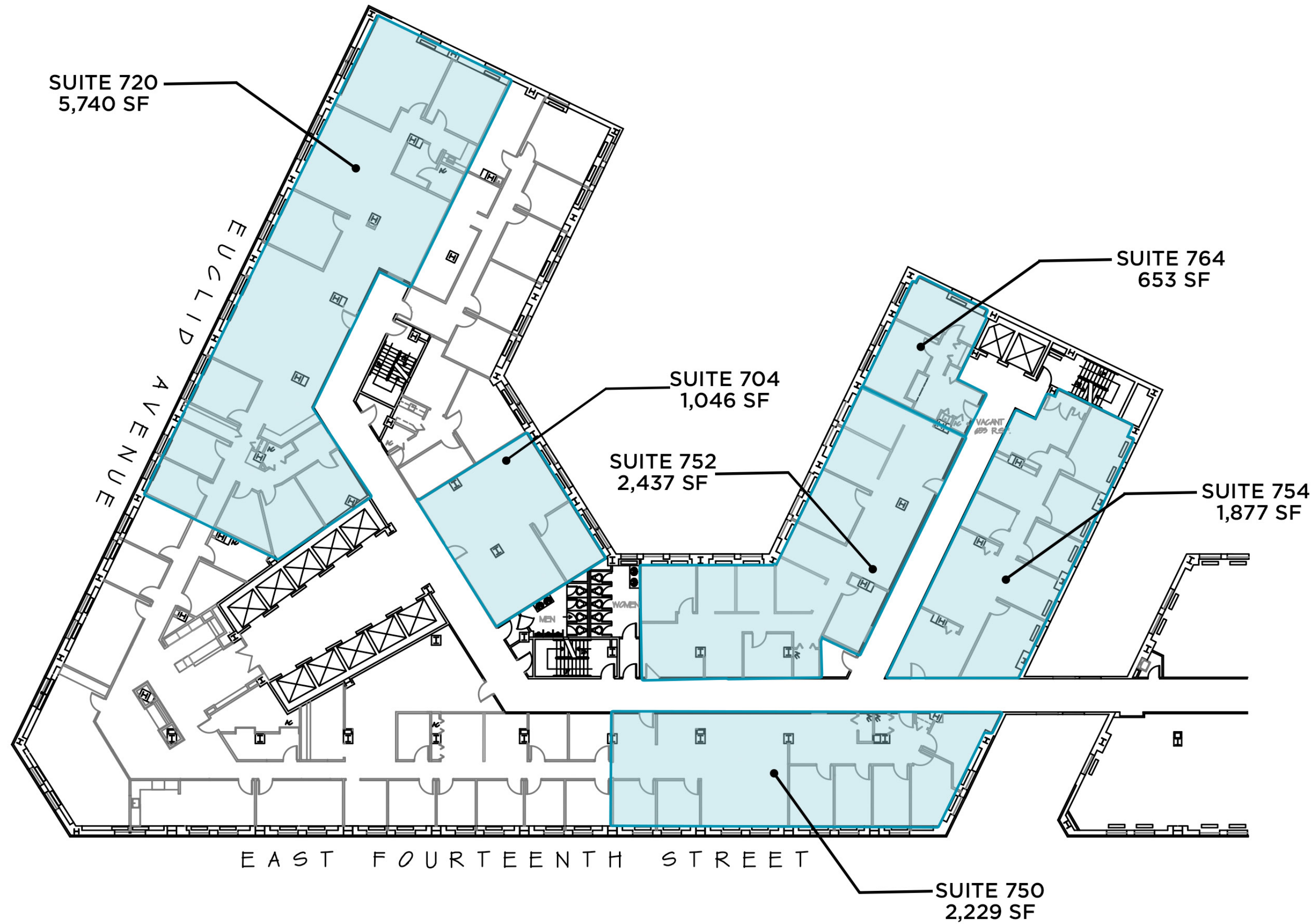


SIXTH FLOOR AVAILABILITIES

- Suite 604 - 2,717 SF
 - Suite 612 - 1,120 SF
 - Suite 616 - 969 SF
 - Suite 620 - 516 SF
 - Suite 662 - 1,160 SF
 - Suite 668 - 778 SF
 - Suite 670 - 782 SF
- 4,806 SF Max. Contiguous



FLOOR PLANS SEVENTH FLOOR

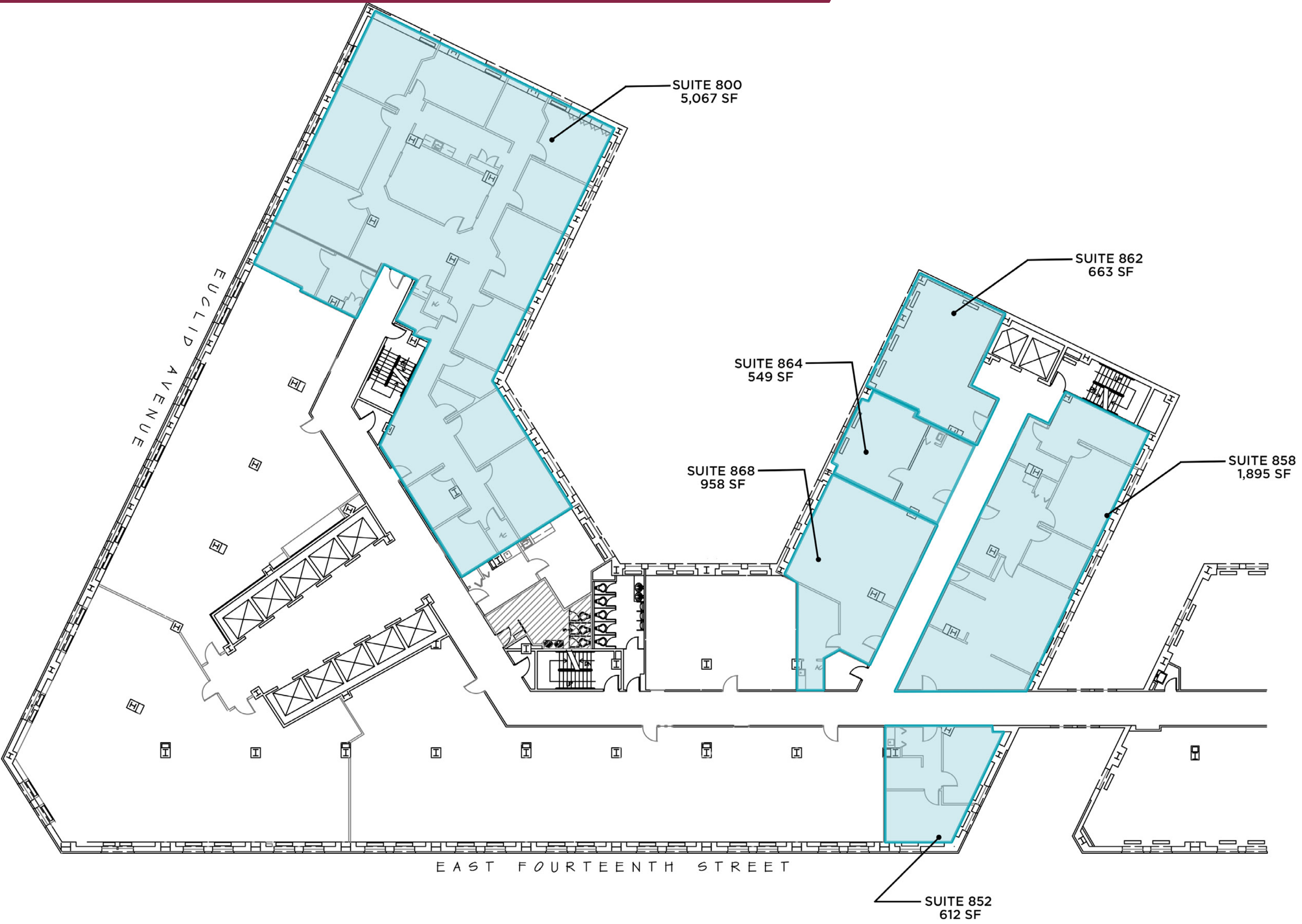


SEVENTH FLOOR AVAILABILITIES

- Suite 704 - 1,046 SF
- Suite 720 - 5,740 SF
- Suite 750 - 2,229 SF
- Suite 752 - 2,437 SF
- Suite 754 - 1,877 SF
- Suite 764 - 653 SF



FLOOR PLANS EIGHTH FLOOR



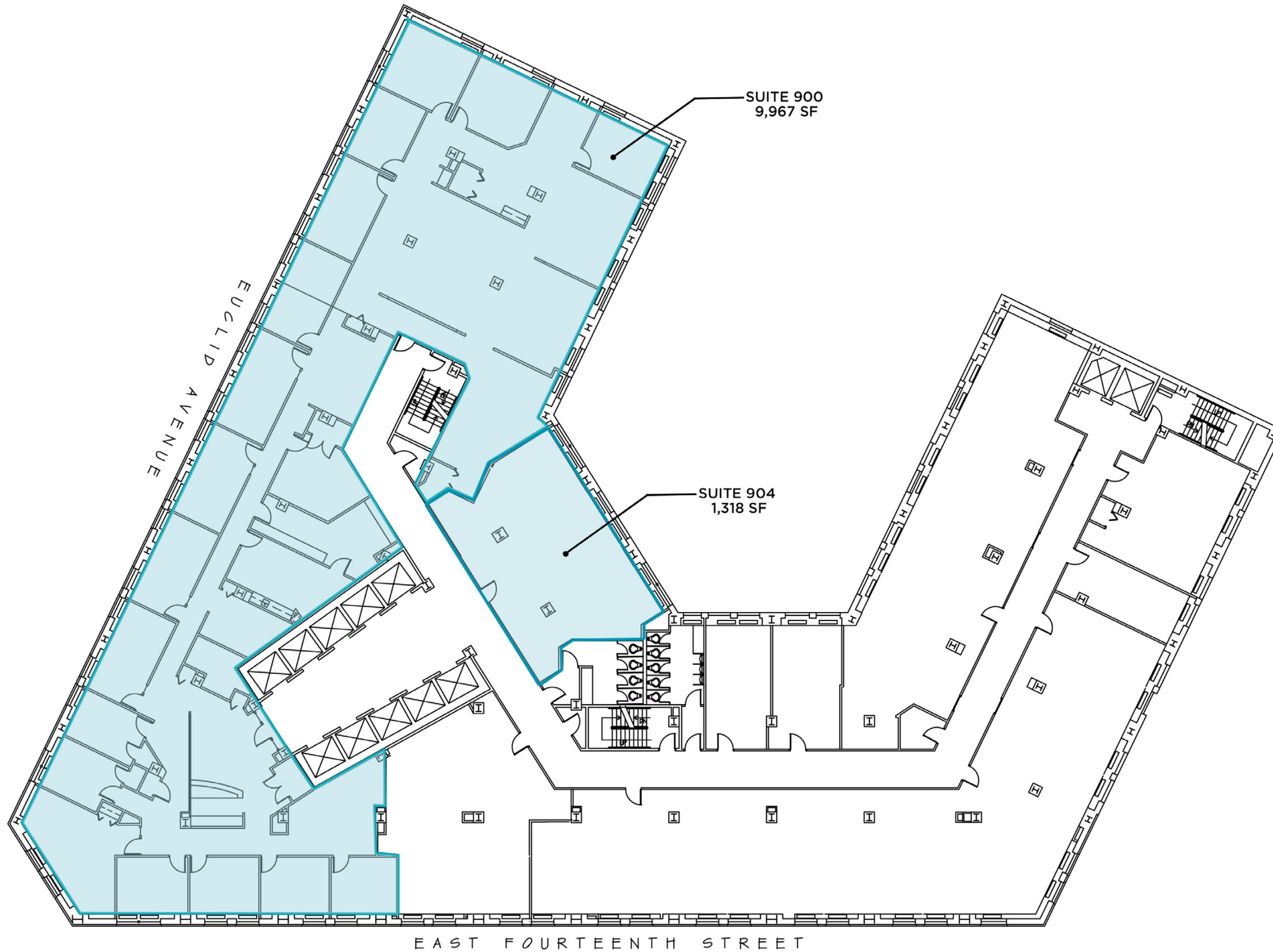
EIGHTH FLOOR AVAILABILITIES

- Suite 800 - 5,067 SF
- Suite 858 - 1,895 SF
- Suite 862 - 663 SF
- Suite 864 - 549 SF
- Suite 868 - 958 SF

2,170 SF Max. Contiguous



FLOOR PLANS NINTH FLOOR



NINTH FLOOR AVAILABILITIES

- Suite 900 - 9,967 SF
- Suite 904 - 1,318 SF

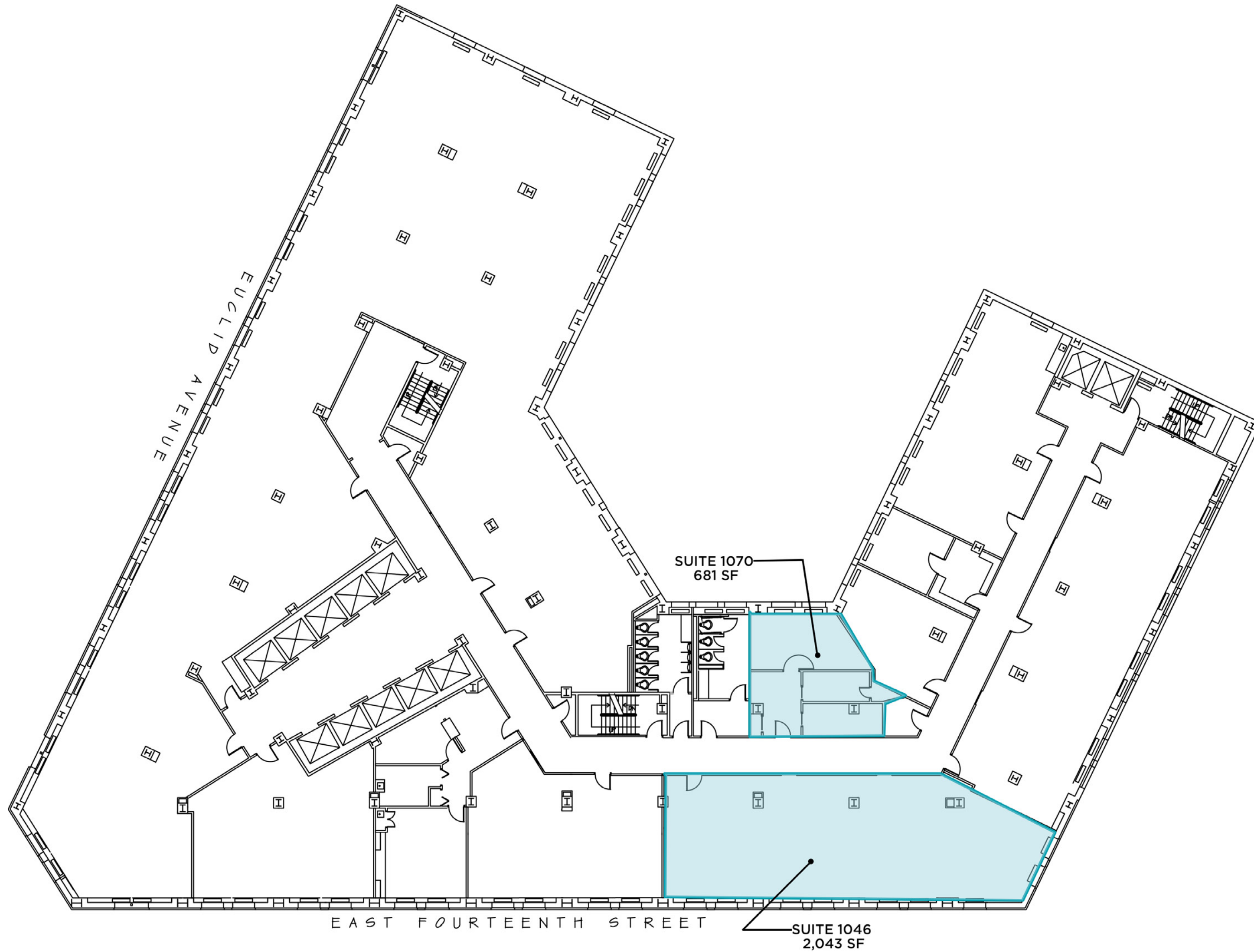
11,285 SF Max. Contiguous



FLOOR PLANS TENTH FLOOR

TENTH FLOOR AVAILABILITIES

- Suite 1046 - 2,043 SF
- Suite 1070 - 681 SF



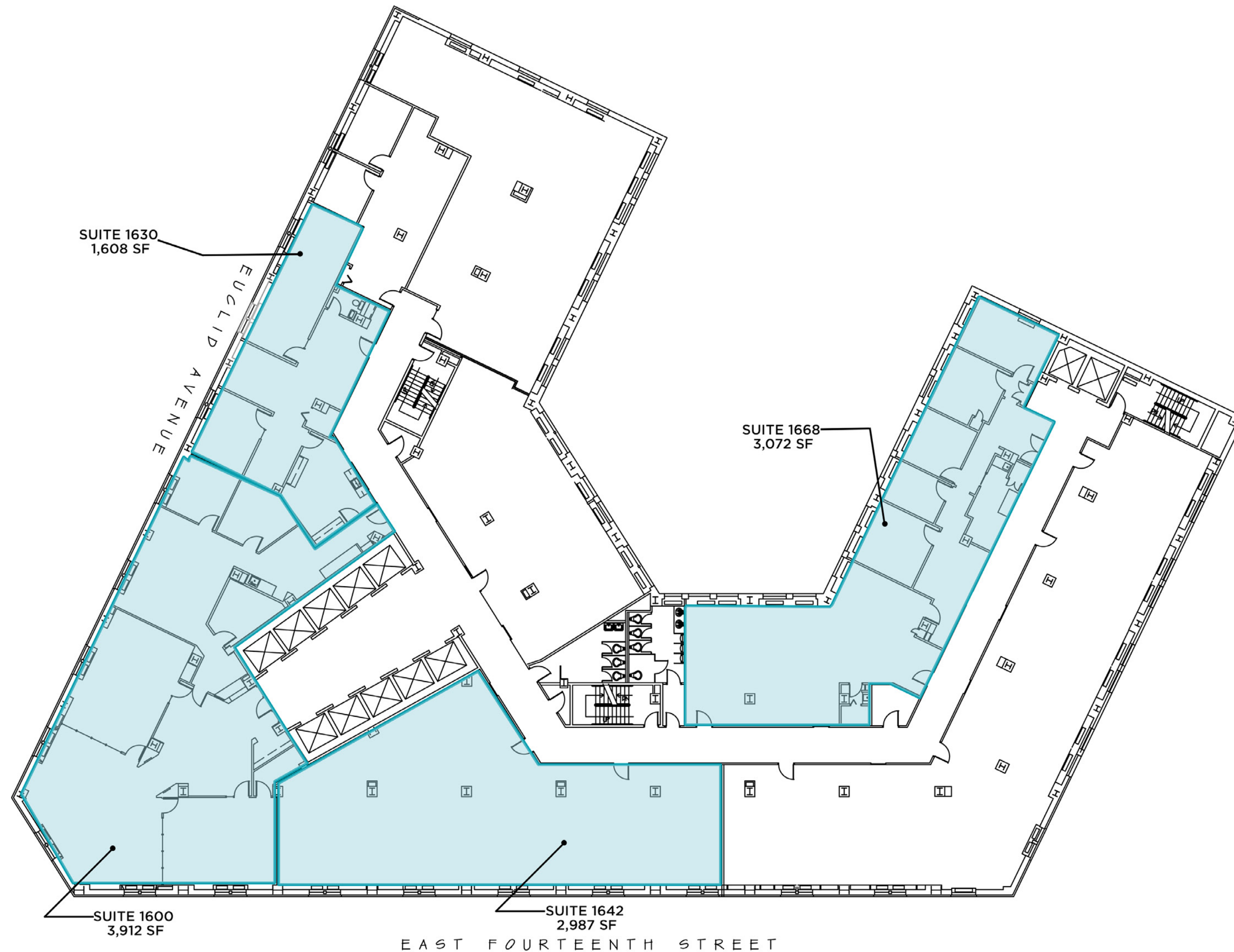
FLOOR PLANS FIFTEENTH FLOOR

FIFTEENTH FLOOR AVAILABILITIES

- Suite 1500 - 5,660 SF
 - Suite 1504 - 1,938 SF
 - Suite 1530 - 2,209 SF
 - Suite 1548 - 2,567 SF
 - Suite 1570 - 1,533 SF
- 10,436 SF Max. Contiguous



FLOOR PLANS SIXTEENTH FLOOR



SIXTEENTH FLOOR AVAILABILITIES

- Suite 1600 - 3,912 SF
- Suite 1630 - 1,608 SF
- Suite 1642 - 2,987 SF
- Suite 1668 - 3,072 SF

8,507 SF Max. Contiguous





ROCK & ROLL
HALL OF FAME



LAKESIDE AVE



CHESTER AVE

The Idea Center

The Bulkley Building



CLEVELAND STATE UNIVERSITY



ONTARIO ST

SUPERIOR AVE

PROSPECT AVE



EUCLID AVE

CEDAR AVE



The Hanna Building

CARNEGIE AVE



W HURON RD

E 9TH ST



WOODLAND AVE



ORANGE AVE



W 25TH ST

DINING

- BIN216
- CIBREO
- CORBO'S BAKERY
- COWELL & HUBBARD
- DISTRICT
- GHOST LIGHT RESTAURANT & LOUNGE
- GREEN ROOSTER FARMS
- HOFBRAUHAUS
- PARNELL'S PUB
- PHUEL CAFE
- REPUBLIC FOOD & DRINK
- SITTOO'S
- STARBUCKS
- SUBWAY
- SUNG'S HOUSE
- YOURS TRULY RESTAURANT
- ZAYTOON LEBANESE KITCHEN

ENTERTAINMENT

- ALLEN THEATRE
- CONNOR PALACE
- HANNA THEATRE
- KENNEDY'S THEATRE
- KEYBANK STATE THEATRE
- MIMI OHIO THEATRE
- THE OUTCALT THEATRE
- THE HELEN
- WESTFIELD STUDIO THEATRE

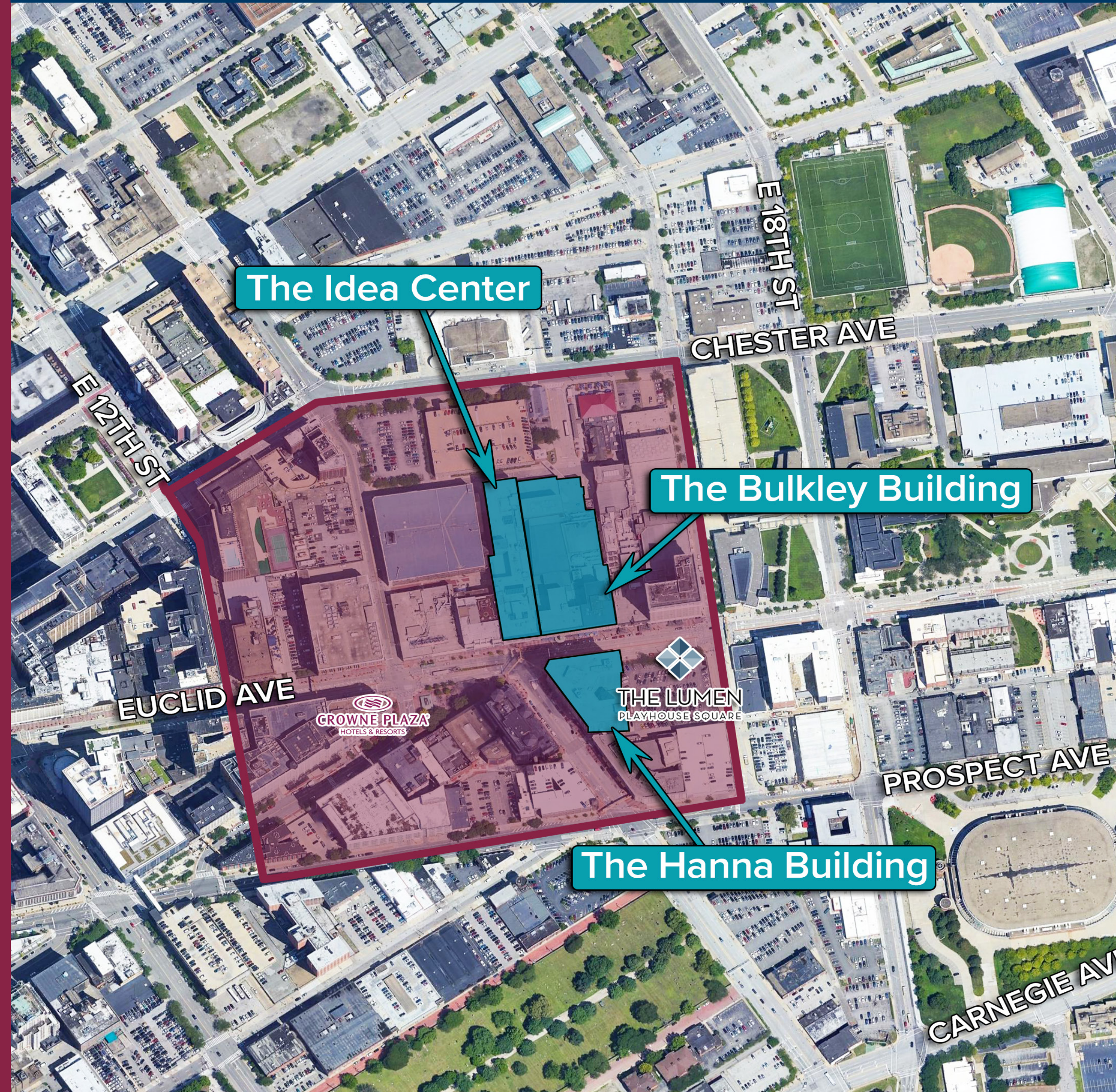
BANKING

- CHASE BANK
- US BANK

LIVE

- RESIDENCES AT HANNA
- THE LUMEN AT PLAYHOUSE SQUARE
- CROWNE PLAZA HOTEL

PLAYHOUSE SQUARE DISTRICT MAP



INS AND OUTS OF TENANT PARKING

17
PARKING
OPTIONS
WITH
OVER
3K
PARKING SPACES

PARKING MAP



Disclaimer: Parking rates and contact information current as of January 2020.
Rates subject to change without notice: Please note that parking information is for daytime/normal business hours (8 am - 6 pm)

	CONTACT	DAILY	EARLY BIRD	MONTHLY	RESERVED
1	Playhouse Square Garage 216.640.8770	\$12.00	\$9.00 (8:30AM)	\$170.00	\$215.00
2	Hanna Garage 216.621.5193	\$13.00	--	\$182.50	\$211.50
3	U.S. Bank Garage 216.696.5311	\$15.00	--	NONE AVAILABLE AT THIS TIME	NONE AVAILABLE AT THE TIME
4	Halle Building Garage 216.241.2139	\$11.00	--	\$170.00	--
5	Platinum Parking (1743 East 17th Street) 216.539.292	\$6.00	--	\$97.20 WAIT LIST	--
6	Shaia's Parking (Chester Avenue - Next to Greyhound) 216.621.0321	\$6.00	--	--	--
7	Platinum Parking (1600 Payne Avenue) 216.539.1292	\$7.00	--	\$118.80	--
8	Shaia's Parking (1500 Payne Avenue) 216.621.0328	\$6.00	--	\$100.00 6AM-6PM WEEKDAYS	\$125.00 24/7
9	Shaia's Parking (E. 13th Street & Chester Avenue) 216.621.0328	\$6.00	--	--	--
10	Platinum Parking (1374 Chester Ave) 216.539.1292	\$7.00	--	\$130.00 WAIT LIST	--
11	Platinum Parking (1832 E. 13th St) 216.539.1292 (LOT 806)	\$9.00	--	\$135.00 LIMITED AVAILABILITY	--
12	Shaia's Parking (Prospect Avenue & E. 17th St)	\$8.00	--	\$140.00 LIMITED AVAILABILITY	\$150.00
13	Platinum Parking (1416 Prospect Ave) 216.539.1292 (LOT 106)	\$9.00	--	\$140.40 WAIT LIST	--
14	Platinum Parking (2171-2199 E. 17th St) 216.539.1292	\$8.00	--	\$118.80	--
15	Platinum Parking (E. 14th Street & Prospect Avenue) 216.539.1292	--	--	\$124.20 WAIT LIST	--
16	Platinum Parking (1234 Bolivar Road)	\$8.00	--	\$108.00	--
17	Platinum Parking (1107 Prospect Avenue)	\$8.00	--	\$118.80	--



7AM

BREAKFAST AT
GREEN ROOSTER
CAFE

12PM

LUNCH AT SUNG'S HOUSE WITH
LUNCHTIME TRIVIA IN
U.S. BANK PLAZA

3PM

ENJOY ONE OF THE MANY FREE
CLASSES OFFERED ON
THE U.S. BANK PLAZA

7PM

BROADWAY MUSICAL
AT
CONNOR PALACE

10AM

YOGA UNDER
THE GE CHANDELIER

2PM

OFFICE
STARBUCKS RUN

5PM

COCKTAILS & DINNER AT
REPUBLIC FOOD & DRINK



PLAYHOUSE SQUARE DISTRICT AMENITIES



BIKE SHARE
PROGRAM



CROWNE
PLAZA
*OFFICIAL HOTEL OF
PLAYHOUSE SQUARE

LIVE . WORK . PLAY
ENVIRONMENT
BRINGING NEW LIFE TO
DOWNTOWN CLEVELAND



THE
LUMEN
AT
PLAYHOUSE
SQUARE



20+
RESTAURANT
OPTIONS



ADEGA, CIBREO ITALIAN KITCHEN, CORBO'S
BAKERY, GHOST LIGHT RESTAURANT
& LOUNGE, GREEN ROOSTER FARMS,
HOFBRAUHAUS, YOURS TRULY



THE HANNA BUILDING AMENITIES

THE RESIDENCES AT HANNA
24/7 SECURITY GUARD
ATTACHED PARKING GARAGE



LOCATED CLOSE TO I-77,
I-90 & THE SHOREWAY



RTA HEALTHLINE
& BUS STOP

BUILDING CONFERENCE ROOMS
ON-SITE PROPERTY MANAGEMENT



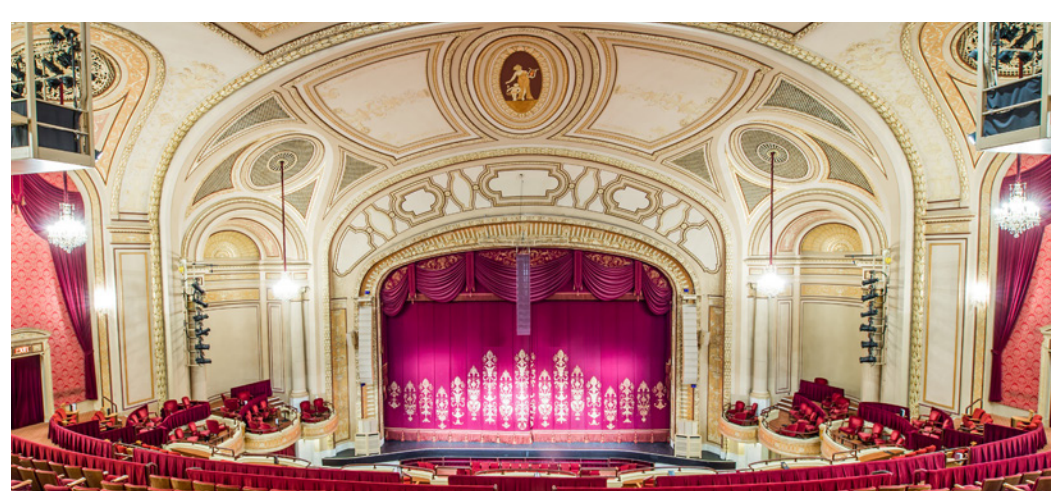
The Playhouse Square “blade” sign replaced the similarly shaped “Playhouse Square Center” sign on the Loews building. This version, though larger, is much more energy efficient. It runs off the same amount of energy as two (2) toasters.

PSQ HISTORY



KEYBANK STATE THEATRE

KEYBANK STATE THEATRE
Purpose: Movies & Vaudeville
Style: Combines Roman, Greek & European Baroque
Features: Four 50-foot murals by American Modernist James Daugherty (1890-1974). Fifth mural by Arnold Englander. Total length of lobby from street to theatre is 320 feet (said to be the longest in the world)
First Show: Movie- A Polly with a Past & Buster Keaton short, Neighbors. Hyman Spitalny and his orchestra
Originally Opened: February 5, 1921



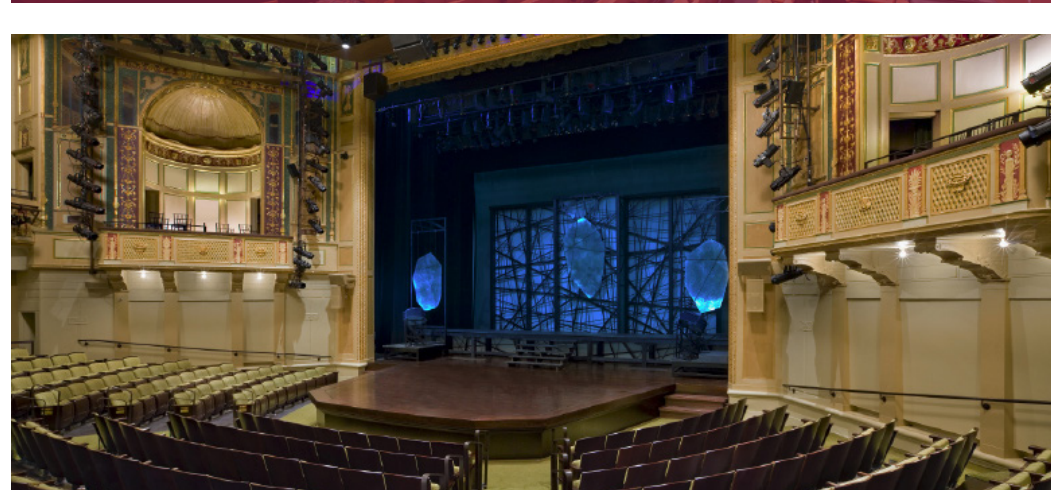
CONNOR PALACE

CONNOR PALACE
Purpose: Vaudeville (B.F. Keith);(Modified for movies, 1926)
Style: French Imperial
Features: Grand Hall, Czechoslovakian crystal chandeliers, blue urn made in Serves, France before WWI. Seven floors of dressing rooms backstage
First Show: Vaudeville- Elsie Janis, the Cansinos, and Grace Hayes, several additional acts and a big band. (Orch. seat was \$1.65)
Originally Opened: November 6, 1922



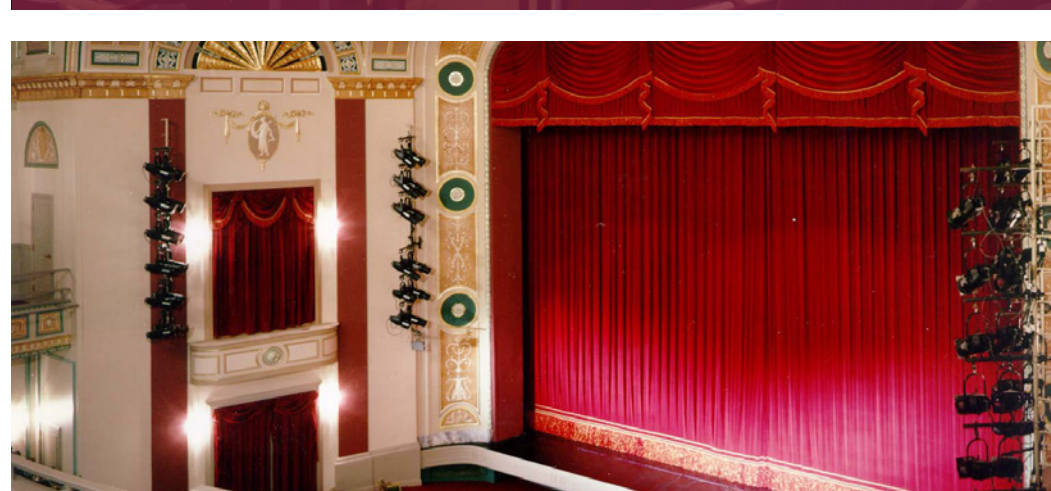
ALLEN THEATRE

ALLEN THEATRE
Purpose: Movies
Style: Italian Renaissance
Features: One of the few “daylight atmospheric” theaters in the country. Side boxes decorative only
First Show: Silent movie- The Greatest Love- Phillip Spitalny and 35 piece orchestra
Originally Opened: April 1, 1921



HANNA THEATRE

HANNA THEATRE
Purpose: Legitimate Theater
Style: Italian Renaissance
Features: Interior features bronze trimming and marble corridors. Original ceiling- coffered Roman- remains today
First Show: Play- Mark Twain’s The Prince and The Pauper starring William Haversham
Originally Opened: March 28, 1921



MIMI OHIO THEATRE

MIMI OHIO THEATRE
Purpose: Legitimate Theater
Style: Italian Renaissance
Features: Italian Renaissance lobby contained 3 murals by Sampitrotti, entitled “Cycle of Venus.” Two paintings by P. Pizzi, in balcony of 14th century Venetian designed auditorium (All lost in lobby fire of 1964)
First Show: Play- The Return of Peter Grimm with David Warfield
Originally Opened: February 14, 1921





Playhouse Square's original five (5) venues (Mimi Ohio, Connor Palace, KeyBank State, Allen and Hanna) were constructed in the 1920s in a mere 19 months. Impacted by the rise of television and population flight to suburbia, by 1968-69 all but the Hanna were eventually boarded up, as entertainment also moved to the suburbs. But in the 1970s, a grass-roots effort saved the historic venues from the wrecking ball, restoring and re-opening the theatres one by one, ushering in a new era of downtown revitalization, which was heralded by the media as "one of the top 10 successes in Cleveland history."



HISTORY





CONNOR REDMAN
Senior Sales Associate
+1 216 525 1493
credman@crescorealestate.com



ALEXANDER RUSSO, SIOR
Senior Vice President
+1 216 525 1495
arusso@crescorealestate.com



*OWNED BY PLAYHOUSE SQUARE
Participating in economic development in Greater Cleveland

[CRESCOREALESTATE.COM/PLAYHOUSESQUARE](https://crescorealestate.com/playhousesquare)

©2021 Cushman & Wakefield. All rights reserved. The material in this presentation has been prepared solely for information purposes, and is strictly confidential. Any disclosure, use, copying or circulation of this presentation (or the information contained within it) is strictly prohibited, unless you have obtained Cushman & Wakefield's prior written consent. The views expressed in this presentation are the views of the author and do not necessarily reflect the views of Cushman & Wakefield. Neither this presentation nor any part of it shall form the basis of, or be relied upon in connection with any offer, or act as an inducement to enter into any contract or commitment whatsoever. NO REPRESENTATION OR WARRANTY IS GIVEN, EXPRESS OR IMPLIED, AS TO THE ACCURACY OF THE INFORMATION CONTAINED WITHIN THIS PRESENTATION, AND CUSHMAN & WAKEFIELD IS UNDER NO OBLIGATION TO SUBSEQUENTLY CORRECT IT IN THE EVENT OF ERRORS.