



7

BRYANT PARK

New Construction
on the Park

CBRE



AVAILABILITIES

ENTIRE 27TH FLOOR: 13,891 RSF
Condition: Built
Possession: Immediate

ENTIRE 26TH FLOOR: 14,074 RSF
Condition: Demolished
Possession: Immediate

PARTIAL 16TH FLOOR: 4,278 RSF
Condition: Demolished
Possession: Immediate

PARTIAL 15TH FLOOR: 8,109 RSF
Condition: Built
Possession: Arranged

PARTIAL 15TH FLOOR: 2,895 RSF
Condition: Built
Possession: Arranged

SPACE + BUILDING FEATURES

- ◆ Column-free tower floors
- ◆ Floor-to-ceiling, 10-foot wide windows
- ◆ Slab heights of 14'–15'
- ◆ Efficient side-core floor plates
- ◆ Direct access to the B/D/F/M/7 and close proximity to 1/2/3/A/C/E subway stations. 10-minute walk from Grand Central and Penn Station, and 7-minute walk to Port Authority



ENTIRE 27TH FLOOR

13,891 RSF — Existing Installation



RAW SPACES

Entire 26th Floor: 14,074 RSF + Partial 16th Floor: 4,278 RSF



PARTIAL 15TH FLOOR

8,109 RSF — Existing Installation



PARTIAL 15TH FLOOR

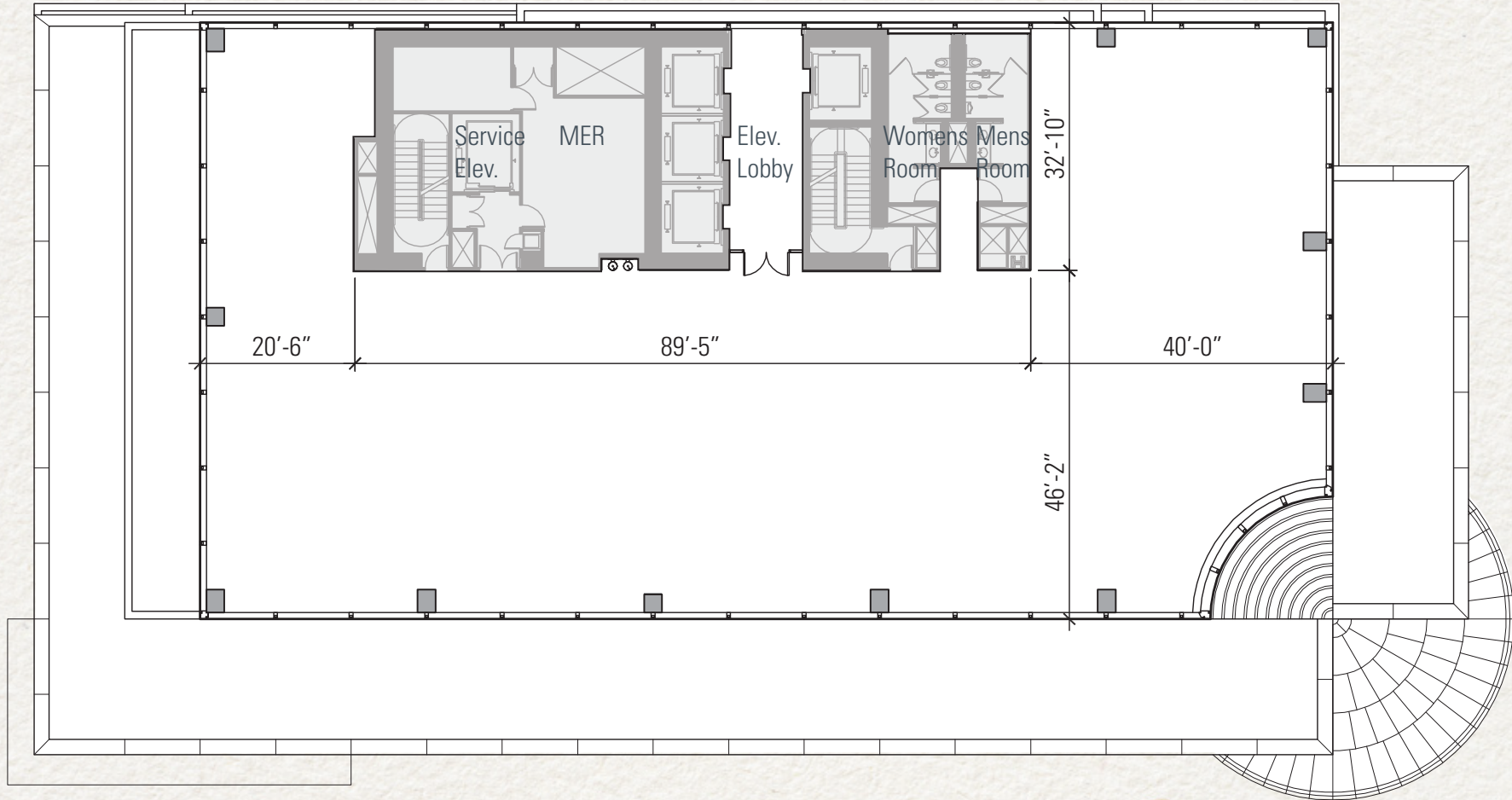
2,895 RSF — Existing Installation



UNOBSTRUCTED PANORAMIC VIEWS



TYPICAL HIGH RISE CORE + SHELL PLAN



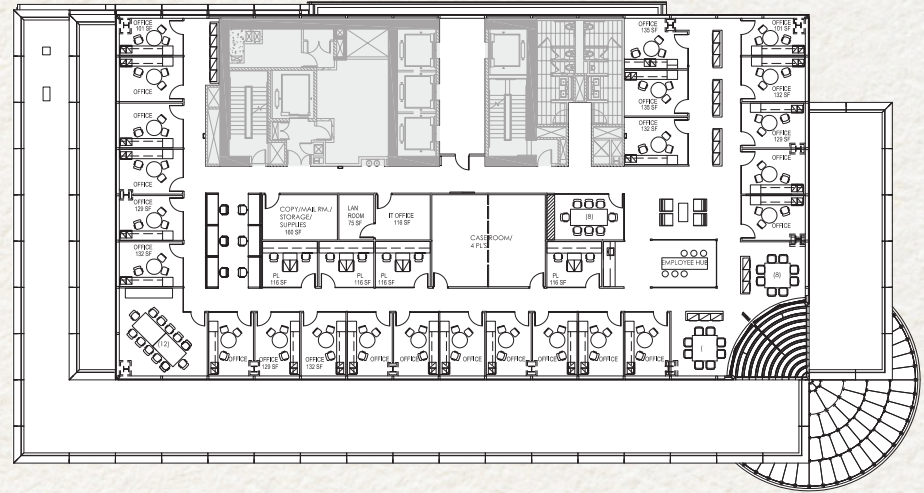
TYPICAL HIGH RISE - FULL FLOOR SAMPLE TEST FITS

OFFICE/LEGAL

Offices: 28

Workstations: 6

Conference Rooms: one, 12-person; one, 8-person

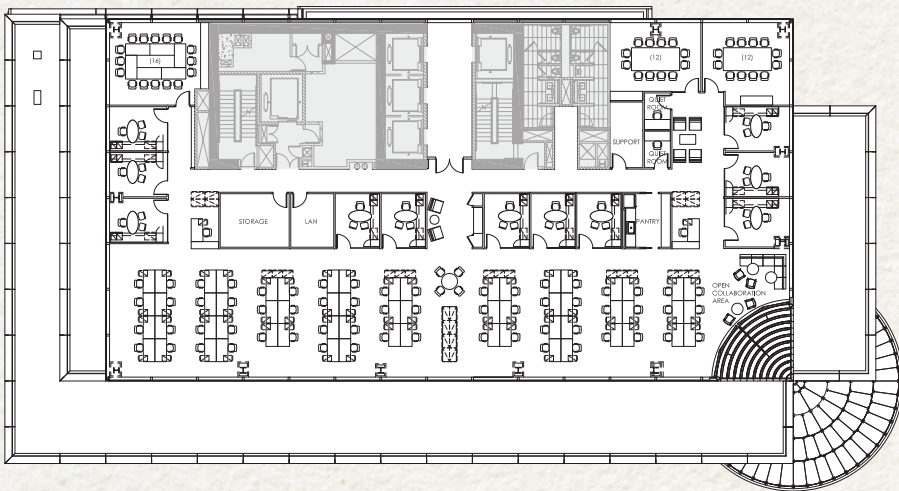


HEDGE FUND

Offices: 11

Workstations: 70

Conference Rooms: one, 16-person; two, 12-person

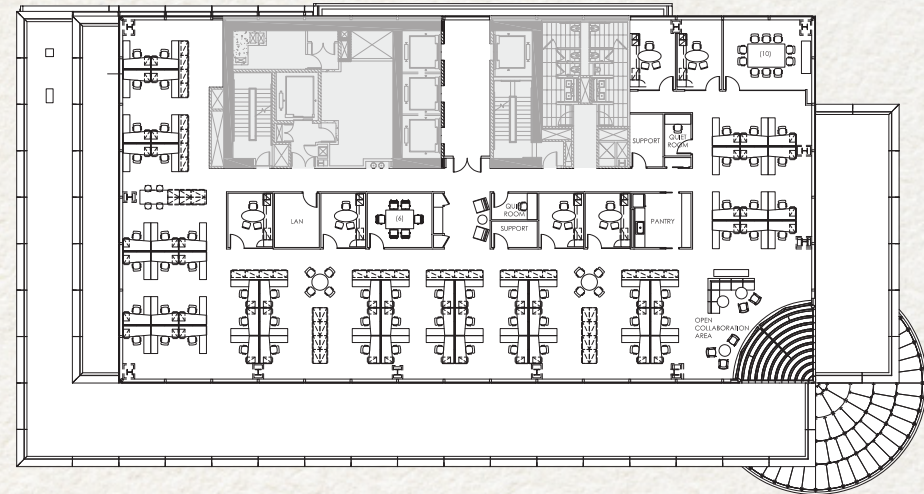


OPEN PLAN

Offices: 6

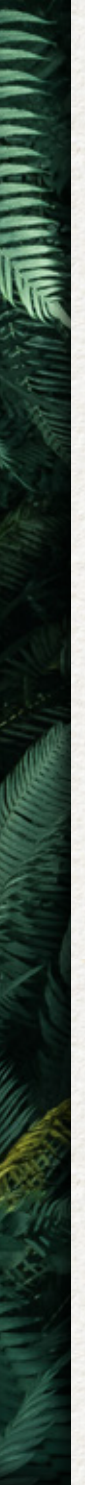
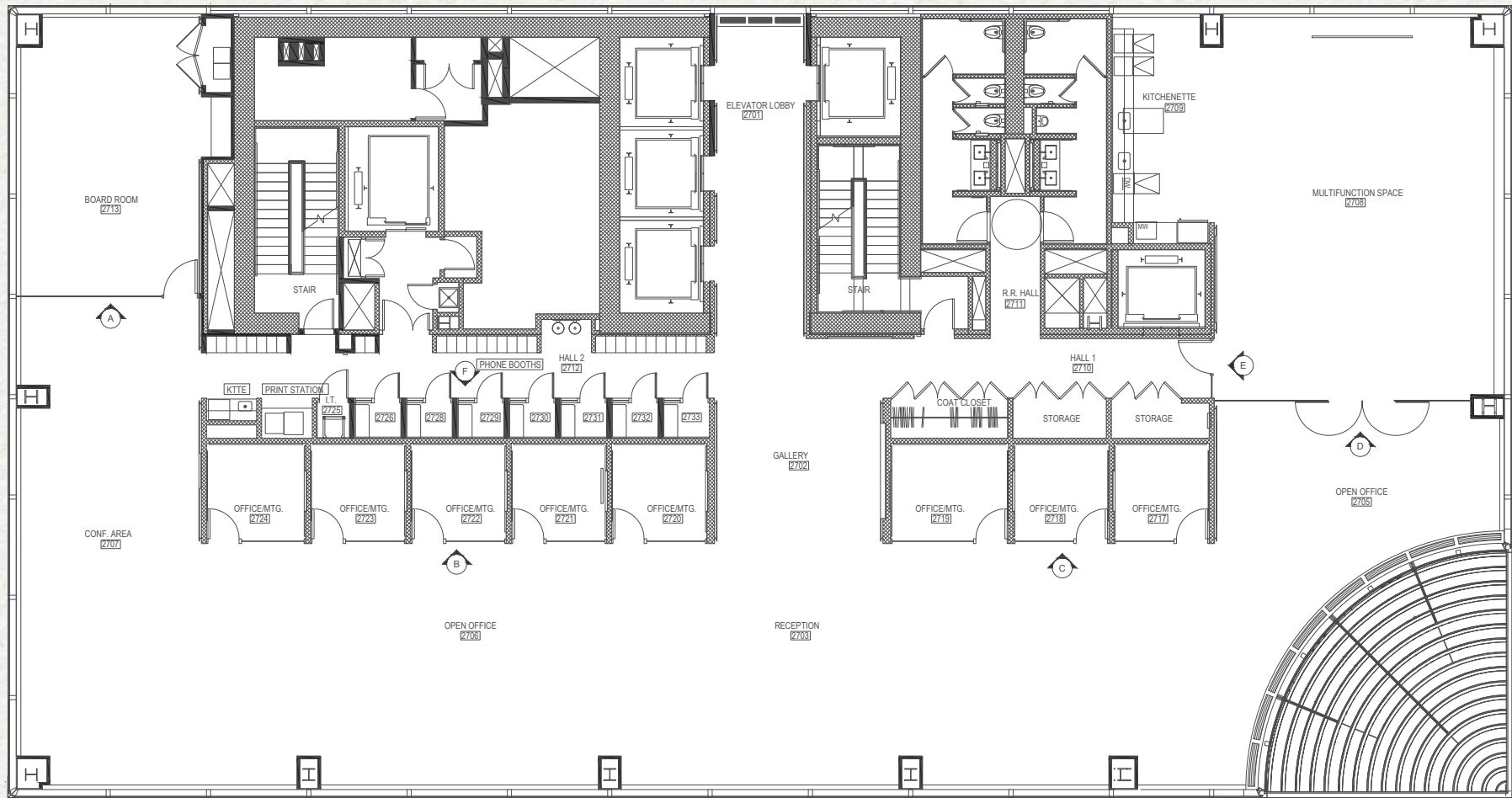
Workstations: 62

Conference Rooms: one, 10-person; one, 6-person



27TH FLOOR - AS BUILT

13,891 RSF — Existing Installation



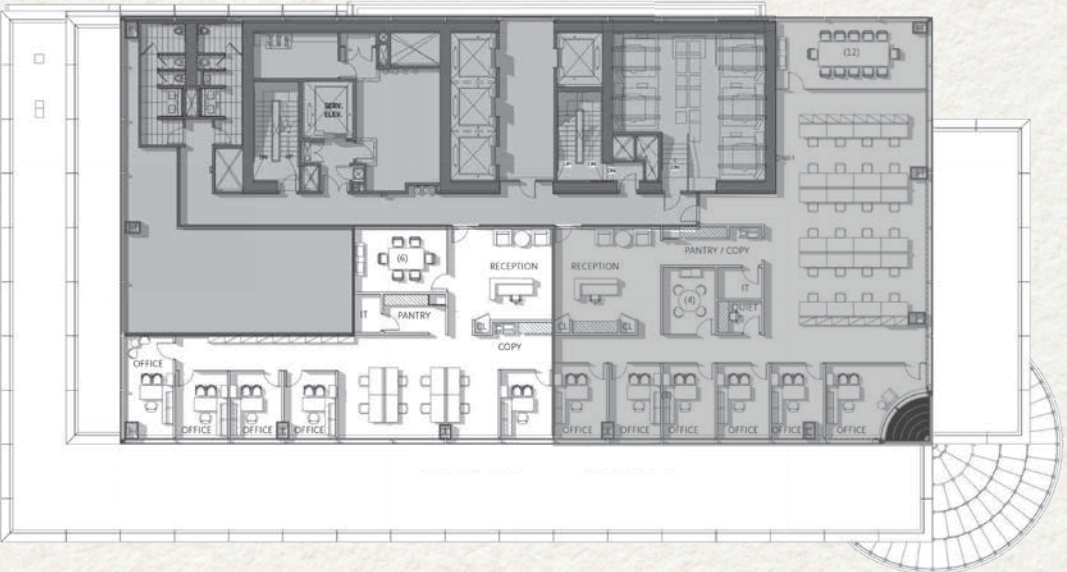
PARTIAL 16TH FLOOR - SAMPLE TEST FITS

4,278 RSF

Offices: 3
Workstations: 12
Conference Rooms: one, 6-person



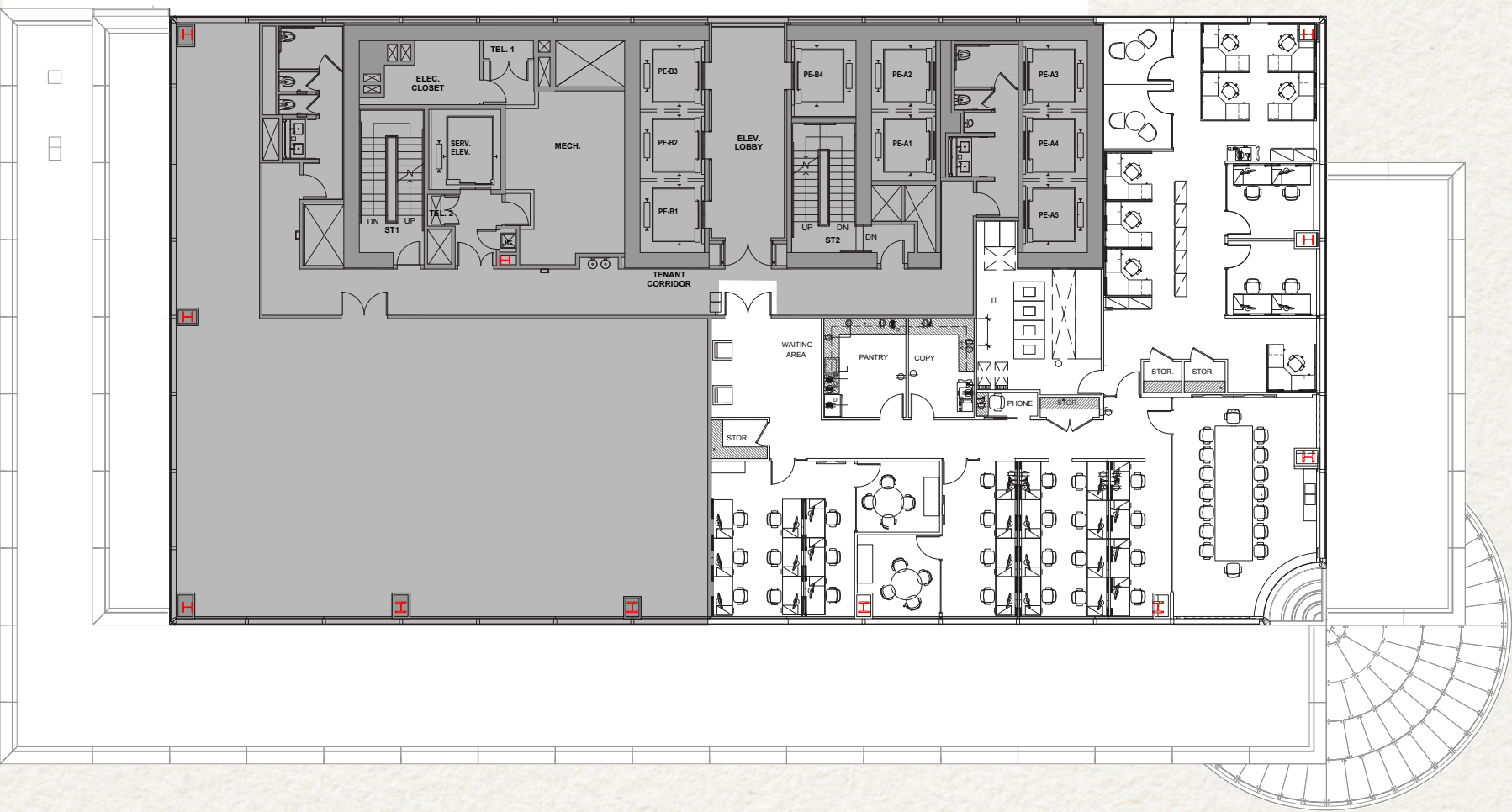
Offices: 5
Workstations: 8
Conference Rooms: one, 6-person



PARTIAL 15TH FLOOR

8,109 RSF — Existing Installation

Offices: 4
Workstations: 33
Conference Rooms: two, 4-person; one, 16-person



PARTIAL 15TH FLOOR

2,895 RSF — Existing Installation

- Offices: 2
- Workstations: 16
- Conference Rooms: one, 4-person





7

BRYANT PARK

CLYDE REETZ

212-984-8354
clyde.reetz@cbre.com

EVAN FIDDLE

212-656-0576
evan.fiddle@cbre.com

EVAN HASKELL

212-984-8059
evan.haskell@cbre.com

ADELE HUANG

212-984-8079
adele.huang@cbre.com

HOWARD FIDDLE

212-984-6525
howard.fiddle@cbre.com

MARY ANN TIGHE