

ULTRA-MODERN OFFICE SPACE IN FREE STANDING HISTORIC BRICK & BEAM BUILDING

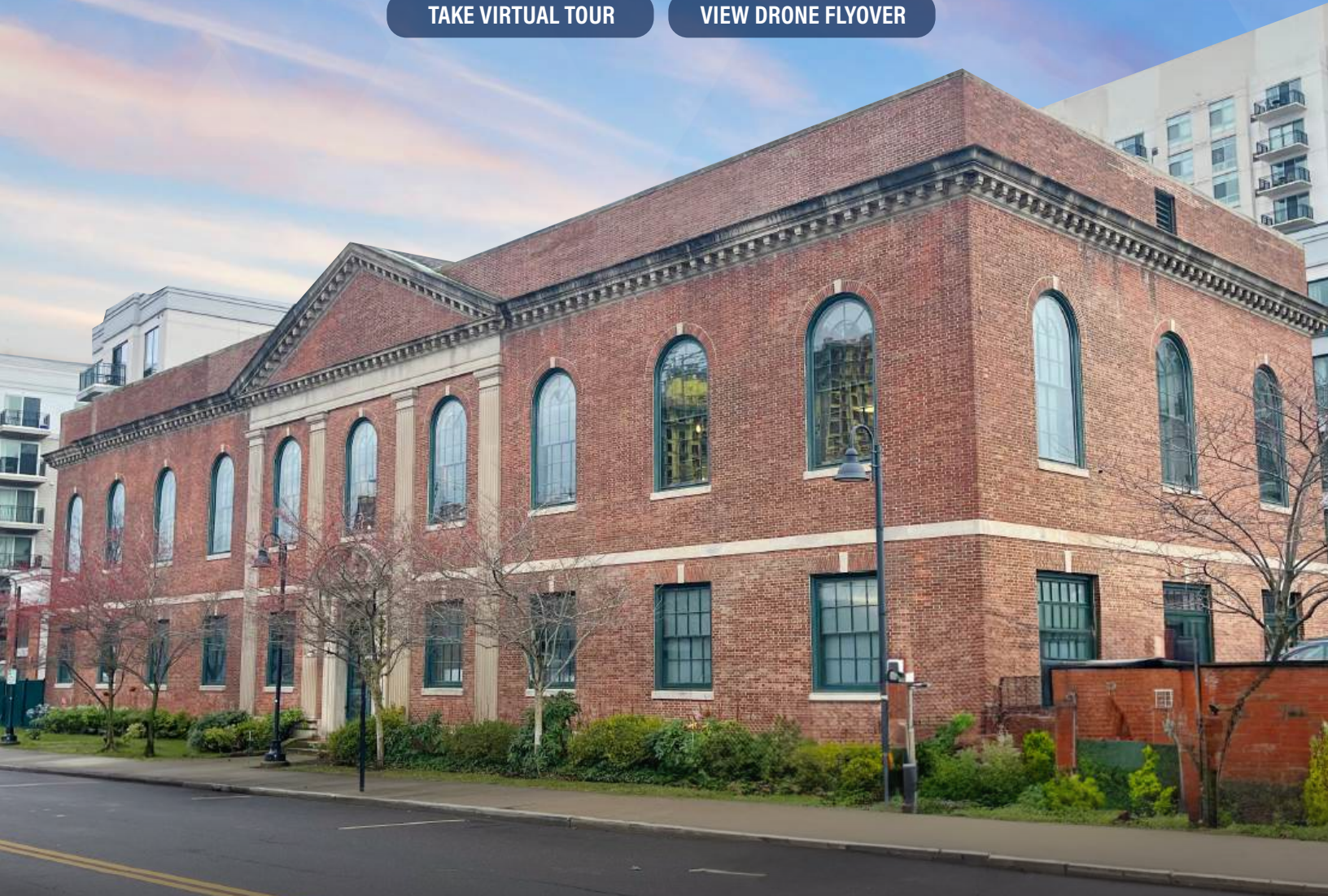


7 MARKET STREET

STAMFORD, CONN.

[TAKE VIRTUAL TOUR](#)

[VIEW DRONE FLYOVER](#)



NEWMARK

WELCOME TO 7 MARKET STREET

PROPERTY OVERVIEW

7 Market Street is a standalone 20,373 SF building located in the Harbor Point district of Stamford. Formally Kayak.com's headquarters, it has an incredible existing installation, exposed brick loft-style space in move-in condition. It also resides in the largest corporate headquarter concentrations in the U.S. and is approximately **30 miles** northeast of New York City.

HIGHLIGHTS & FEATURES

- Located in the heart of the Harbor Point district
- LEED certified facility
- 5 minute walk to the Stamford train station
- Outdoor patio area with fire pits (photo below)
- Entertainment/exercise area with full locker rooms

SPECIFICATIONS

Availability	Entire Building	20,373 SF
	Ground Floor	6,090 SF
	First Floor	6,125 SF
	Second Floor	6,125 SF
	Mezzanine	2,033 SF

Asking rent Negotiable

Possession May 1, 2025*

Sale Price \$5.25 million

CONTACT BROKERS

Tim Rorick 203-531-3622 | tim.rorick@nmrk.com

Torey Walsh 203-531-3633 | torey.walsh@nmrk.com

** Possible earlier possession available*



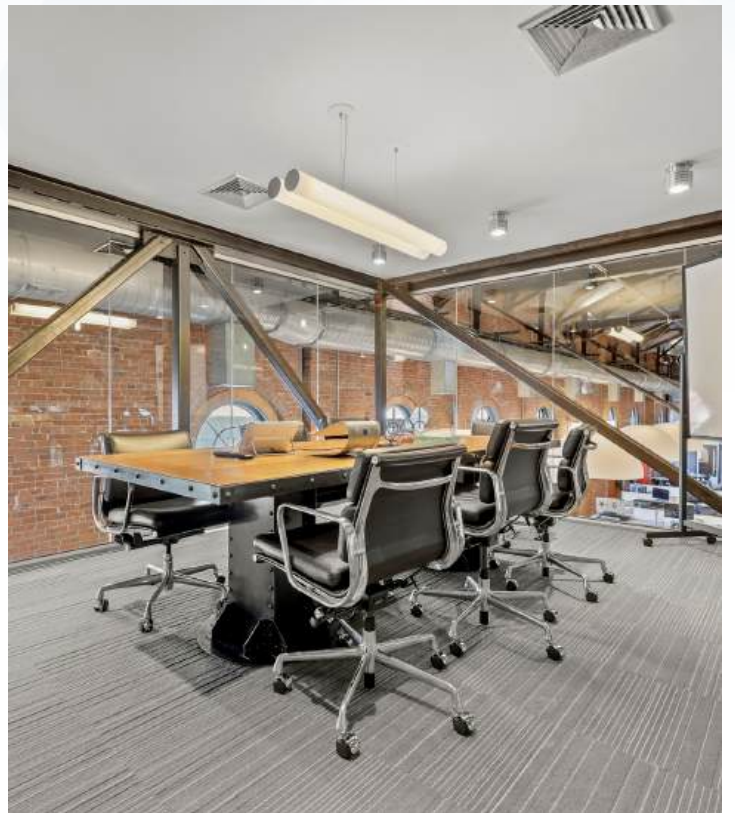
ULTRA-MODERN LOBBY ENTRANCE



COLLABORATIVE OFFICE SPACE



STUNNING BRICK & BEAM



CONNECTIVITY TO NEW YORK CITY

Stamford, Connecticut, is a vibrant city located in Fairfield County, on the northern shore of Long Island Sound. It's known for its dynamic business community, serving as a significant financial hub, with many corporate headquarters.

Located in southwestern CT, it is just minutes away from the NY state border (Westchester County). The property is conveniently located 0.2 miles from the Metro-North Stamford train station, **offering express service to Grand Central Station in 57 minutes.** The property is also easily accessible via Interstate 95 via exit 7 or 8.

INTERSTATE 95	1.6± Mi.	A key regional N-South thoroughfare connecting area residents to Northern Fairfield County and Boston to the North, and Manhattan and Westchester County to the South
STAMFORD TRAIN & AMTRAK STATION	0.2± Mi.	This station provides access to Grand Central Terminal in Manhattan via Metro-North's New Haven Line – the busiest rail line in the nation with approximately 40.3 million riders annually, and the Stamford Transportation Center is the line's busiest stop
MERRITT PARKWAY	8.0± Mi.	A regional North-South thoroughfare connecting area residents to Northern Fairfield County and Hartford to the North and Manhattan and Westchester County to the South
WESTCHESTER COUNTY AIRPORT	18.0± Mi.	1.1± million passengers in 2021
LAGUARDIA INTERNATIONAL AIRPORT	32.0± Mi.	30.8± million passengers in 2021
JFK INTERNATIONAL AIRPORT	41.9± Mi.	30.7± million passengers in 2021



PRIME STAMFORD LOCATION

EASY ACCESS & HOME TO 10 FORTUNE 500 COMPANIES



TIM RORICK
203-531-3622 | tim.rorick@nmrk.com

TOREY WALSH
203-531-3633 | torey.walsh@nmrk.com

NEWMARK

ENJOY BUSTLING HARBOR POINT

Harbor Point is a vibrant mixed-use development that features residential buildings, commercial spaces, retail shops, restaurants, and recreational amenities. It boasts scenic views of Long Island Sound and offers residents and visitors waterfront parks, walking trails, and marinas. It's become a destination for living, working, and leisure, contributing to Stamford's reputation as a dynamic city on the Connecticut coast.

3

HOTELS

15

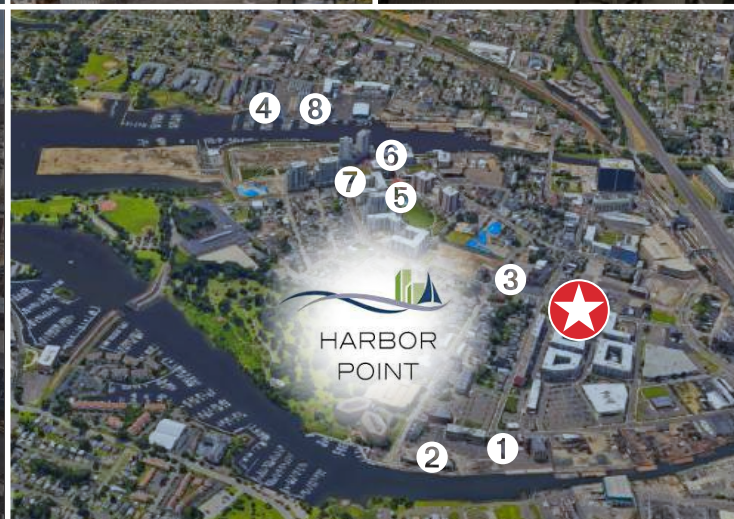
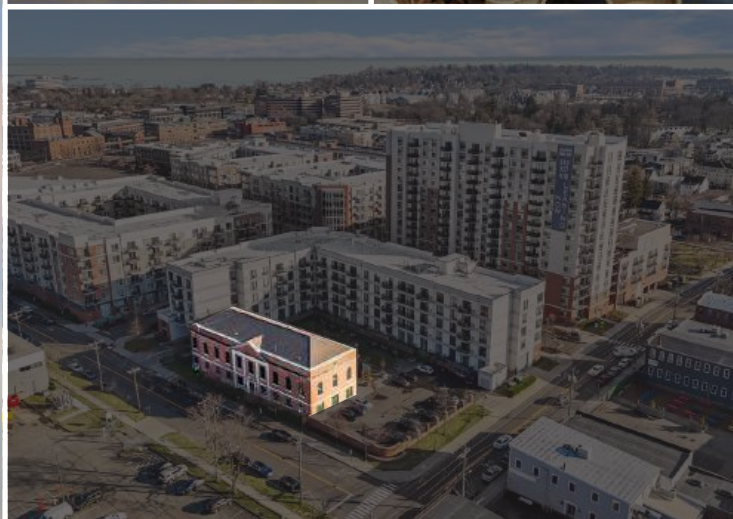
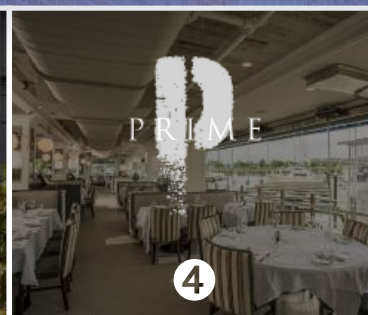
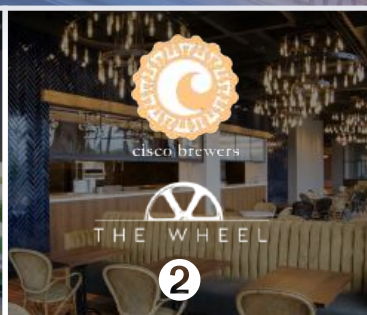
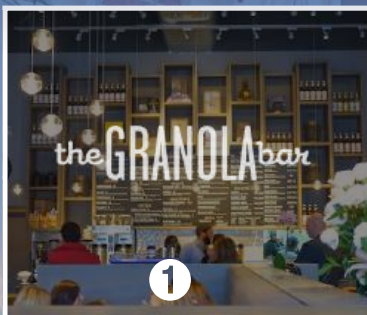
RESTAURANTS/BARS

4,500

MULTIFAMILY UNITS COMPLETED
SINCE 2014

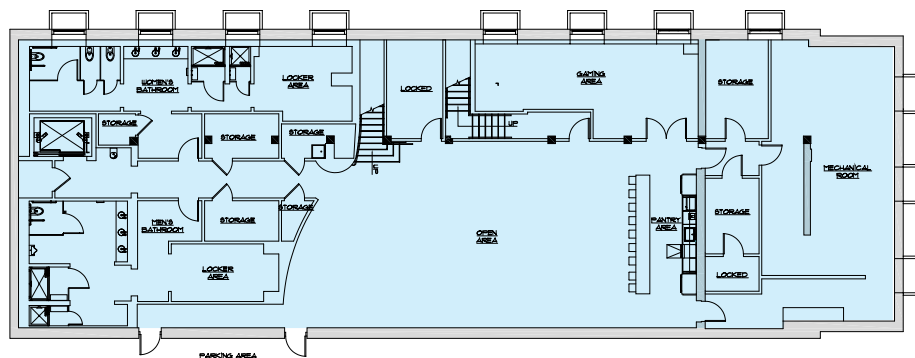
2,131

MULTIFAMILY UNITS
UNDER CONSTRUCTION

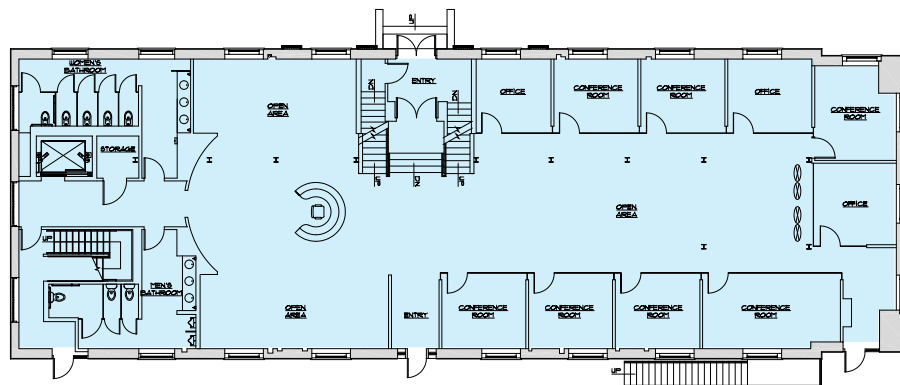


NEWMARK

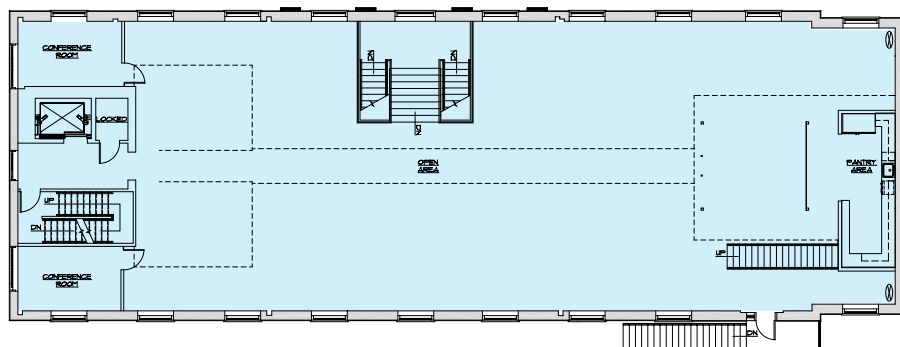
FLOOR PLANS



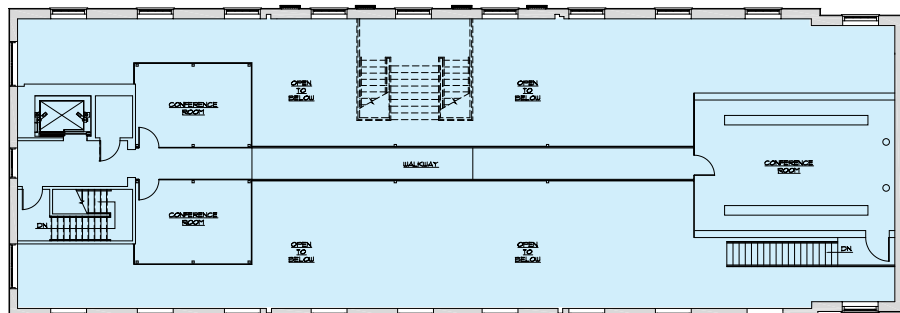
GROUND FLOOR: 6,090 SF



FIRST FLOOR: 6,125 SF



SECOND FLOOR: 6,125 SF



MEZZANINE: 2,033 SF

TIM RORICK

203-531-3622

tim.rorick@nrmrk.com

TOREY WALSH

203-531-3633

torey.walsh@nrmrk.com

The information contained herein has been obtained from sources deemed reliable but has not been verified and no guarantee, warranty or representation, either express or implied, is made with respect to such information. Terms of sale or lease and availability are subject to change or withdrawal without notice.

NEWMARK