



12612
Raymer

BEGINYAN'S INC.

SHERMAN WAY INDUSTRIAL CENTER

Chad Gahr, SIOR
Executive Vice President
818. 383. 5581
cgahr@naicapital.com
Cal DRE Lic # 01230414

David Young
Executive Vice President
818. 422. 8658
dyoung@naicapital.com
Cal DRE Lic # 00914504

Eric Seidenglanz
Vice President
661. 341. 1243
eseidenglaz@naicapital.com
Cal DRE Lic # 01975684

NAICapital
COMMERCIAL REAL ESTATE SERVICES, WORLDWIDE

12612 Raymer St



UNIT SUMMARY

Address: 12612 Raymer Street, North Hollywood, CA 91605

Unit Size: 6,466 RSF

Lease Rate: \$14,548.50 (\$2.25/SF)

Lease Term: Minimum 3 Years

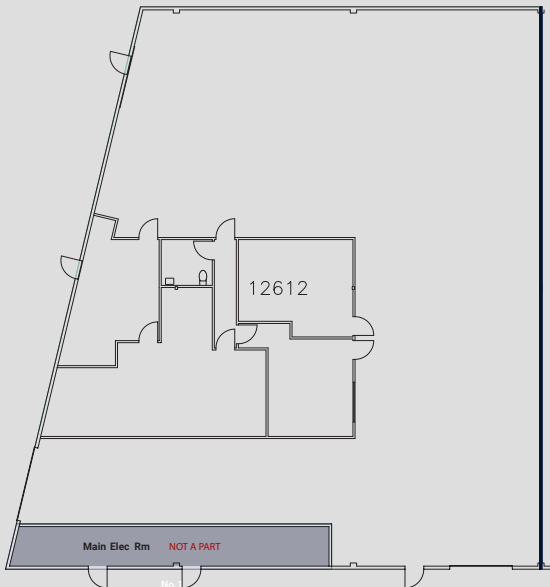
Office Area: 1,985 SF of Fully Renovated Office Space with Two Restrooms

Loading: Two (2) 14' x 10' Ground Level Loading Doors

Clearance: 16' Interior Warehouse Ceiling Clearance

Fire Sprinklers: Yes

Parking: Twelve (12) Parking Stalls



Sherman Way Industrial Center, North Hollywood, CA



Property Highlights

The Sherman Way Industrial Center is one of the premier business parks in the San Fernando Valley. The Sherman Way Industrial Center is a professionally managed, fully fenced and secured business park and offers tenants premium amenities such as 16' warehouse clearance, heavy power distribution, fire sprinklers, LED warehouse lighting, renovated office space and restrooms, and oversized loading doors. The Sherman Way Industrial Center can accommodate tenants of most sizes, offering units ranging from +/- 2,000 SF up to +/- 20,000 SF.

The Property is located one (1) block away from California State Route 170, +/- 2.5 miles from the Burbank Airport, and +/- 5 miles from the Van Nuys Airport.

BUILDING FEATURES



LEASE RATE

\$2.25 PSF



WAREHOUSE SF

6,466 SF



CLEAR HEIGHT

16'0"



OFFICE

1,985 SF



FIRE SPRINKLERS



POWER

200 Amps, 120/240 Volts
3 Phase, 4 Wire

*Lessee to Verify



PARKING

2/1,000



GROUND LEVEL DOORS

Two (2) 14'x10'
Ground Level Loading Doors



AMENITIES

Professionally Managed
Fully Fenced Business Park

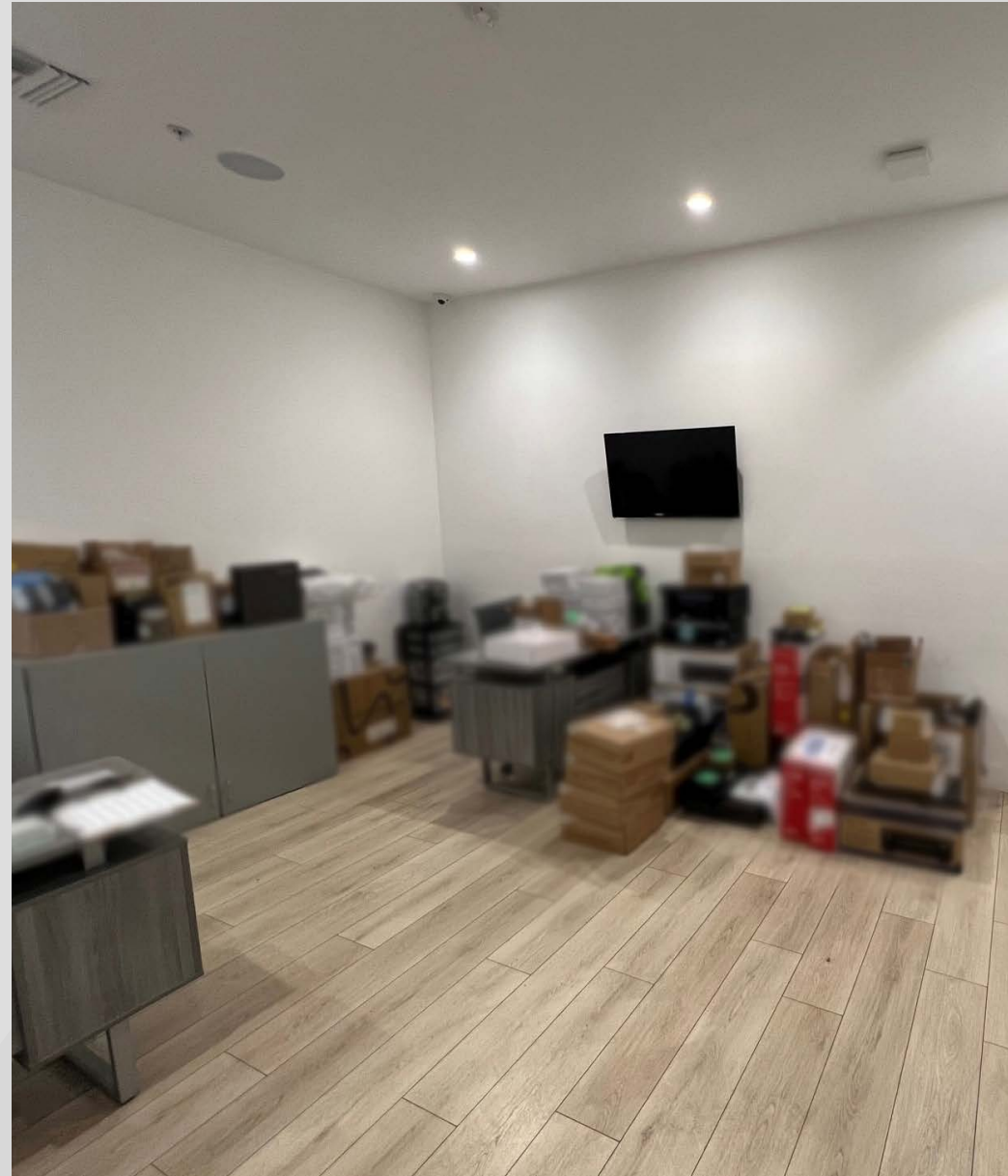
Sherman Way Industrial Center, North Hollywood, CA

Property Gallery



Sherman Way Industrial Center, North Hollywood, CA

Property Gallery

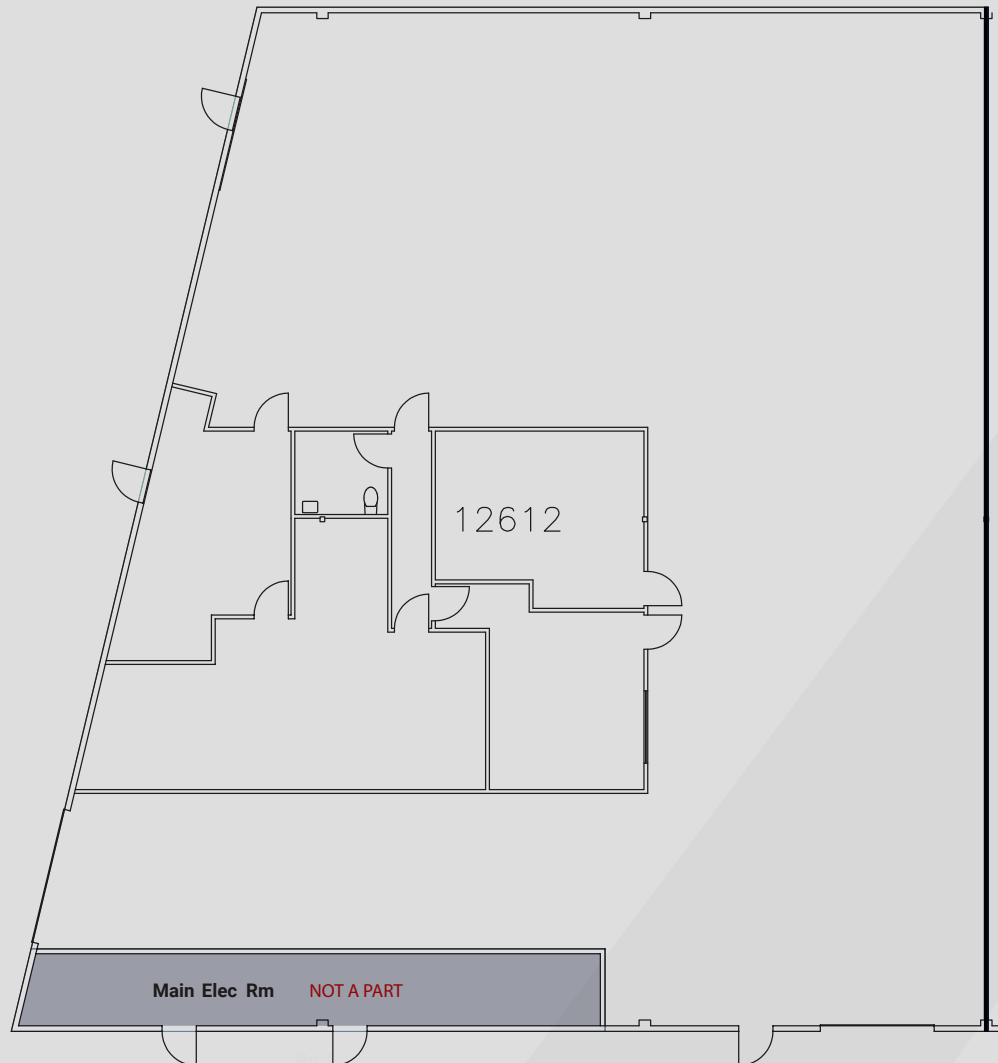


Sherman Way Industrial Center, North Hollywood, CA

Property Gallery



Floor Plan



12612 Raymer Street



AREA OVERVIEW



NORTH HOLLYWOOD, CA

North Hollywood is a vibrant neighborhood within the City of Los Angeles' San Fernando Valley region in Los Angeles County. North Hollywood, known as NoHo, lies approximately nine miles north of Hollywood and 16 miles north of Downtown LA. The community spans about six square miles and includes the popular NoHo Arts District. Sun Valley makes up the area's northern border, Burbank flanks the east, Toluca Lake and Studio City sit to the south with Valley Village and Valley Glen to the west. Highway 170 runs through the neighborhood providing easy access to the nearby 5, 101, 134, and 405 freeways.

The NoHo Arts District serves as an ideal environment for retail businesses, intimate entertainment venues and nightlife. North Hollywood emits a distinctly urban, creative vibe that speaks to its reputation as one of LA's hottest enclaves. Home to 22 independent, live theatres, the second-largest concentration of theaters in the nation, the community attracts actors, artists, writers, and musicians as well as enthusiasts to its galleries, sound stages, fashion boutiques and trendy cafes.

North Hollywood and the surrounding LA area offer a thriving economy to support the robust retail sector. NoHo is transforming into a regional transit-oriented hub for its clusters of tech, production, healthcare, and creative companies offering high-paying local jobs. The Metro station makes for easy commutes and provides transit for tourists. The Academy of Television Arts & Sciences, Universal Studios, the International Film Festival, and the Art Institute of California – Hollywood represent some of the area's top attractions and institutions bringing in thousands of workers and visitors every year. Coworking spaces are also on the rise, offering flexible office options for businesses and self-employed workers.

Aerial Map



COLDWATER CANYON AVE.

SATICOY ST. S

RAYMER ST.

BELLAIRE AVE.

SHERMAN WAY

WHITSETT AVE.

N

170

Google

SHERMAN WAY INDUSTRIAL CENTER

Listing Brokers



Chad Gahr, SIOR
Executive Vice President
818. 383. 5581
cgahr@naicapital.com
Cal DRE Lic # 01230414



David Young
Executive Vice President
818. 422. 8658
dyoung@naicapital.com
Cal DRE Lic # 00914504



Eric Seidenglanz
Vice President
661. 341. 1243
eseidenglaz@naicapital.com
Cal DRE Lic # 01975684

No warranty, express or implied, is made as to the accuracy of the information contained herein. This information is submitted subject to errors, omissions, change of price, rental or other conditions, withdrawal without notice, and is subject to any special listing conditions imposed by our principals. Cooperating brokers, buyers, tenants and other parties who receive this document should not rely on it, but should use it as a starting point of analysis, and should independently confirm the accuracy of the information contained herein through a due diligence review of the books, records, files and documents that constitute reliable sources of the information described herein. NAI Capital CA DRE #02130474