

Tides Converge San Francisco Campus

Office and Co-Working
Available Spaces



Located in the Presidio

A place where non-profits and social innovators can come together.

ABOUT TIDES CONVERGE

Since 1976, Tides has been partner for justice in the social sector, working closely with doers and donors to build the power of historically excluded groups who face systemic barriers. Tides provides fiscal sponsorship, donor advised funds, impact investing, grantmaking solutions, and dynamic workspace to advance social justice and equity.

Tides opened Converge San Francisco in 1995, a vibrant workspace for 70+ nonprofits and values-aligned businesses in twelve buildings that formerly served as the Letterman Hospital in the Presidio National Park. If you're seeking a collaborative community of like-minded, innovative peers, explore the opportunities at Tides Converge.

EXPLORE THE PRESIDIO

Tides is ideally situated on the east end of the Presidio, offering a unique blend of natural beauty and urban convenience.

With easy access to the Golden Gate Bridge, miles of shaded walking trails, Crissy Field, and the new Presidio Tunnel Tops, members and visitors have the unique opportunity to be surrounded by nature all while being a quick 15 minute bus ride to downtown with the free PresidioGo bus.



AMENITIES IN THE PRESIDIO



Cafe RX

Colibri Mexican Bistro

Baker Beach

YMCA & Cafe

Presidio Bowl & Grill

Golden Gate Overlook

Presidio Social Club Exchange

Round House Cafe

Piccino Presidio

Starbucks

Walt Disney Family Museum and Cafe

Presidio Golf Course and Cafe

View all food and activities here: <https://www.presidio.gov/food/restaurants>

AMENITIES AT TIDES



01 National Park setting + vibrant community:
Rub elbows with staff from over 70 nonprofits and companies invested in a just and equitable future. Enjoy the Adirondack chairs on our redwood-lined lawn or take in the panoramic SF Bay views from the new Tunnel Tops park (with daily food trucks).

02 Conference & event space:
Spaces for groups from 2 to 80, with hybrid meeting capabilities. Community members receive 50% discount on hourly rates.

03 Tenant listserv and IRL programming:
Easy messaging platform to communicate about job and volunteer opportunities, events, and giveaways, with regular opportunities to connect.

04 Onsite café with catering options:
Café Rx is open to the public weekdays from 8am to 2:30pm. Menu posted daily.

05 Free PresidiGo shuttle to downtown transit and abundant parking:
Shuttle completes frequent loops between the Presidio, Embarcadero BART, and the Transbay Terminal. Your Tides Converge badge grants shuttle access during peak commute times. Parking at Tides Converge is all paid via Paybyphone app.

06 Free coffee, tea, and sense of community in our Community Kitchen:
Open from 8:30am to 5pm Monday through Friday. Casual and great for a break from your desk.

07 Drop-in workspace and coworking program:
Office feeling crowded or hosting out-of-town staff? Choose between drop-in and membership-based dedicated desks/offices or work from Bostic Commons lounge. Day passes are \$25 and memberships start at \$250/mo.

08 Locker rooms and secure bike parking:
Basement-level showers and secure bike storage feature 'ride-in, ride-out' ramp access.

09 Mothers' Room:
Available in 1012 Torney behind reception and outfitted with refrigerator, storage cubbies, and recliner.

10 High-volume copier:
Located in 1013 Torney near Bostic Commons.



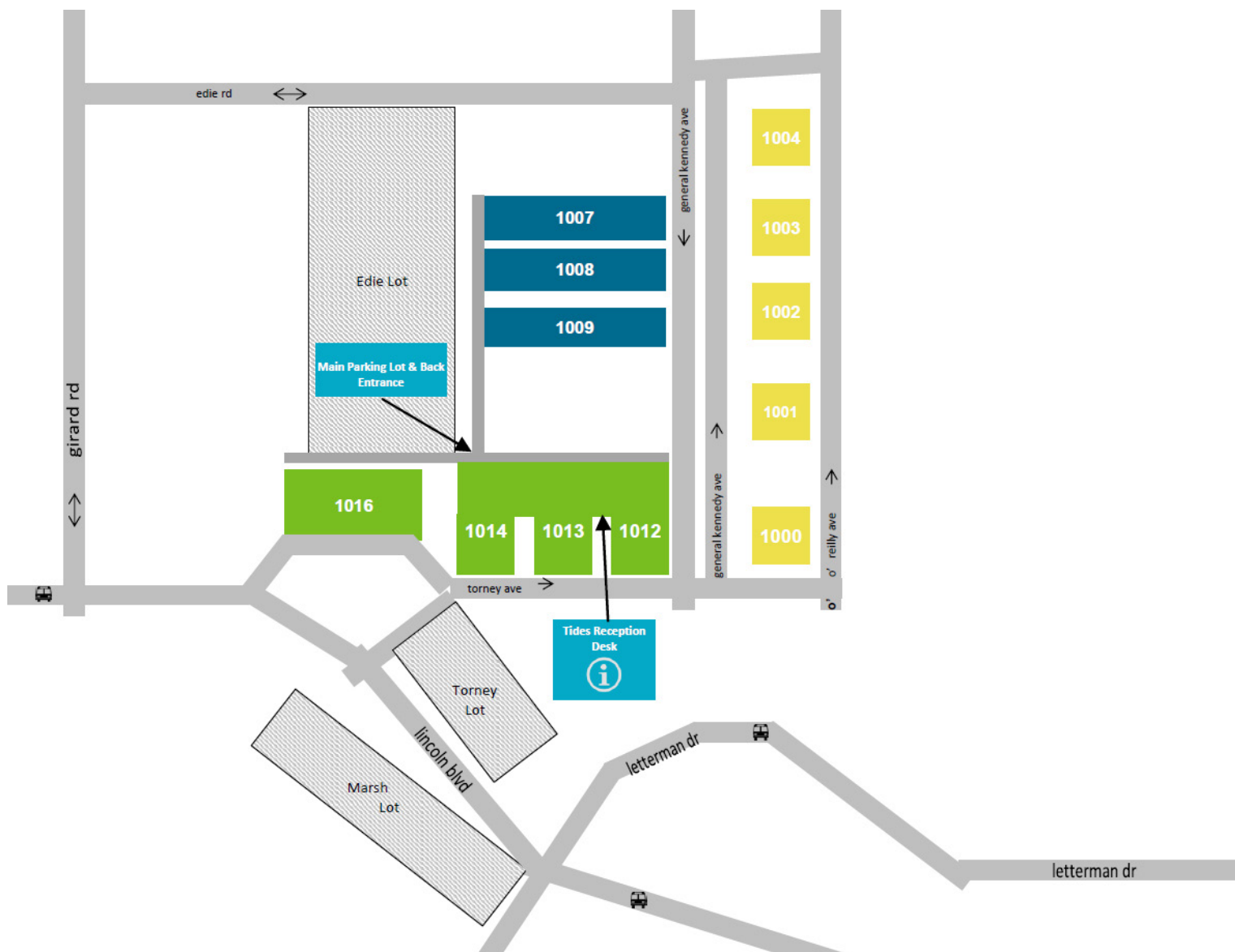
OFFICE SPACES AT TIDES



Tides Converge is a shared non-profit workspace that has operated for 30 years to support mission-driven organizations in San Francisco and New York. By providing below-market, stable, and collaborative workspaces for non-profits and mission-aligned social ventures, Tides' real estate program uses physical space to cultivate community and build equity.



SUMMARY OF AVAILABLE SPACES



The Tides Converge Campus at the Presidio

1000 TORNEY AVE

(1000 O'REILLY)

AVAILABLE NOW

1ST FLOOR | 4,163 RSF

3-story cottage style office space with mix of lounge space, office, storage, break-out and meeting rooms. Kitchens, dedicated restrooms, front and rear porch.

1003 O'REILLY AVE

AVAILABLE NOW

1003-A | 3,724 RSF

3-story cottage style office space with mix of lounge space, office, storage, breakout and meeting rooms. Kitchens, dedicated restrooms, front and rear porch.

1016 LINCOLN AVE

AVAILABLE NOW

SUITE 109 | 3,152 RSF

2 private offices, Open space

1012-1016 TORNEY AVE

AVAILABLE NOW

Building 1013 - FIRST FLOOR | 5,087 RSF

Mix of private offices, workstations and meeting rooms. Furnished. Divisible to 3,585 or 1,502 SF.

Building 1013 & 1014 - SECOND FLOOR | 13,321 RSF

Mix of private offices, workstations and meeting rooms. Furnished. 2 outdoor patios. Potentially divisible.



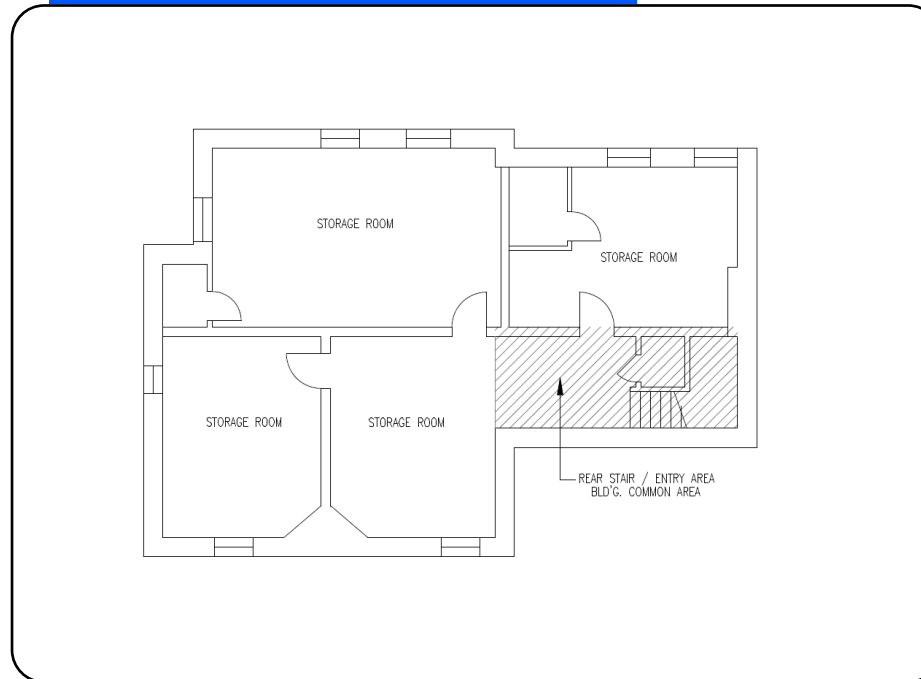
1000 TORNEY AVE (1000 O'REILLY) 1ST FLOOR, 4,163 SF AVAILABLE



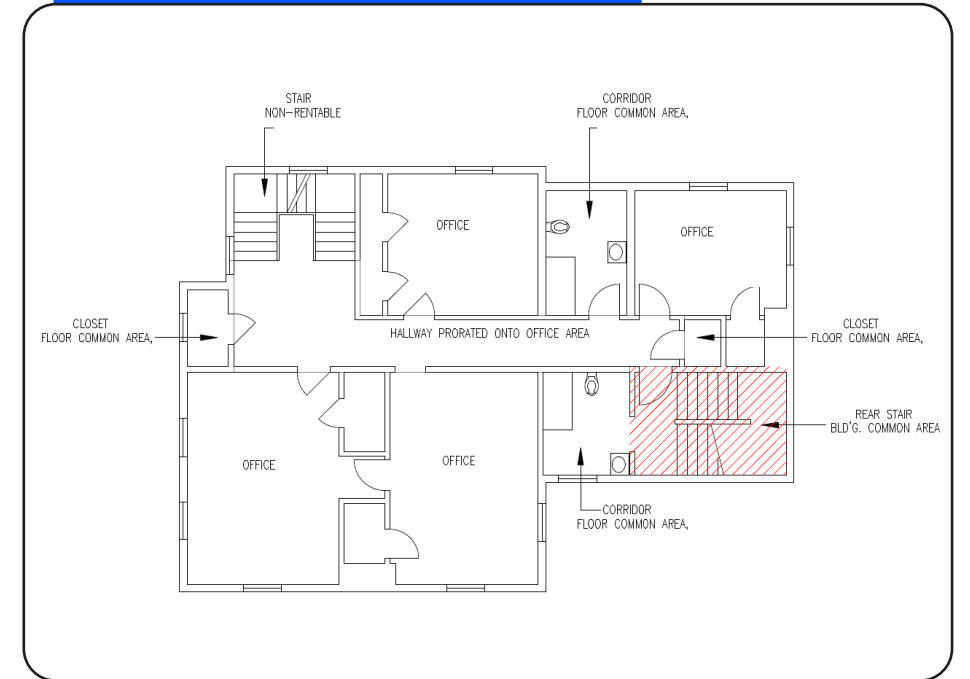
SPACE HIGHLIGHTS

- 3-story cottage style office space
- Mix of office, lounge space, storage and meeting rooms
- Dedicated restrooms
- Enclosed front and rear porches

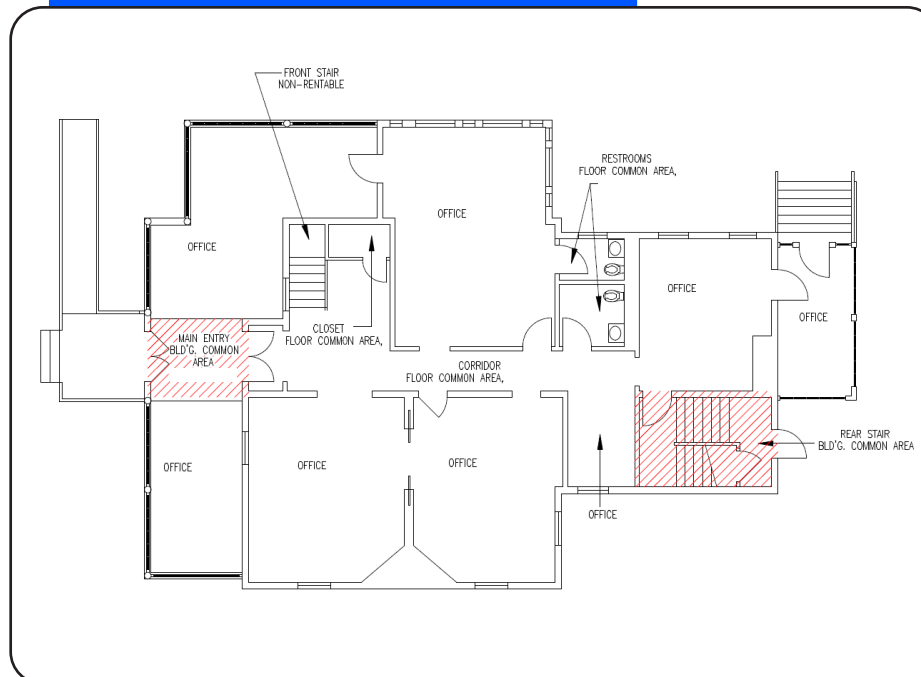
BASEMENT



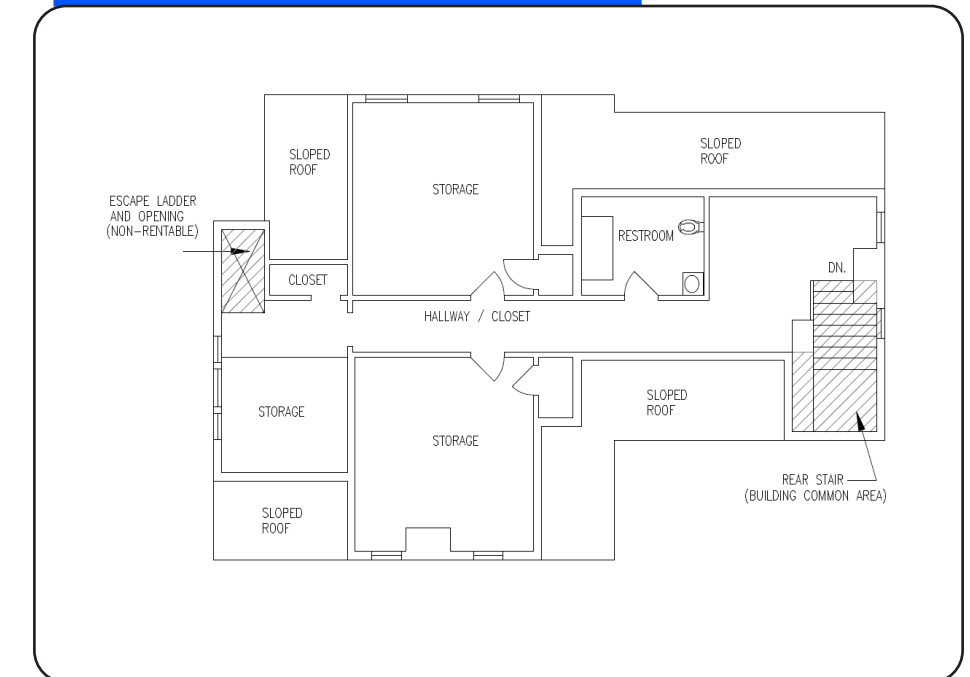
SECOND FLOOR



GROUND FLOOR



3RD FLOOR



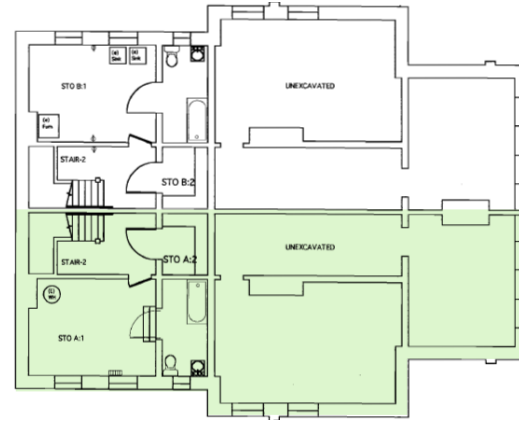


1003 OREILY AVE

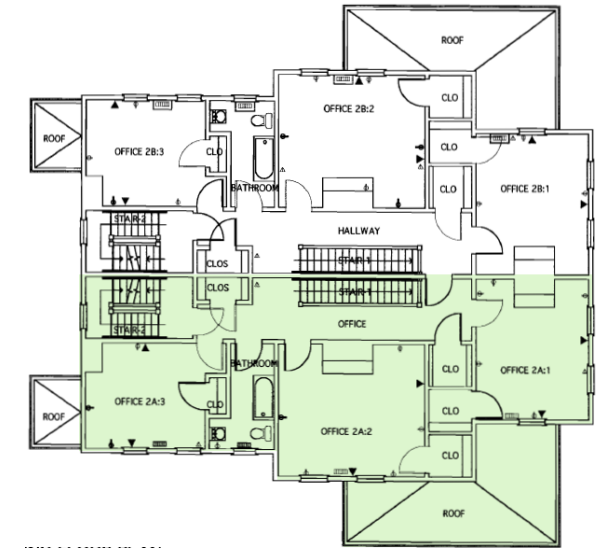
1003-A, 3,724 SF AVAILABLE



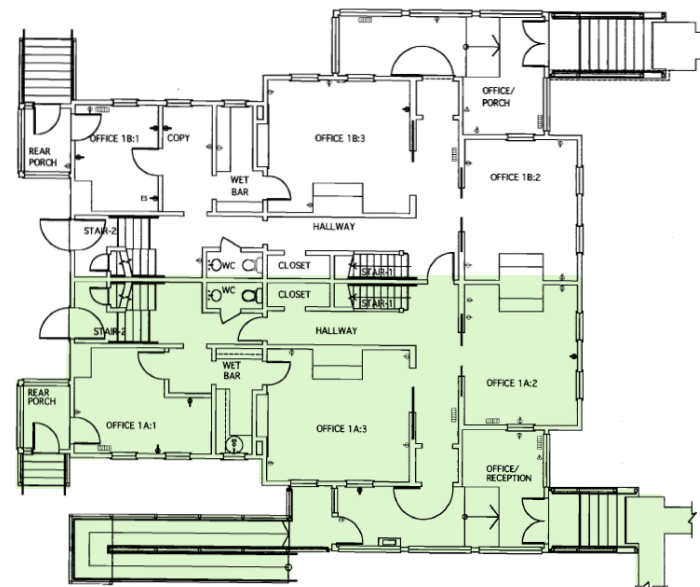
BASEMENT



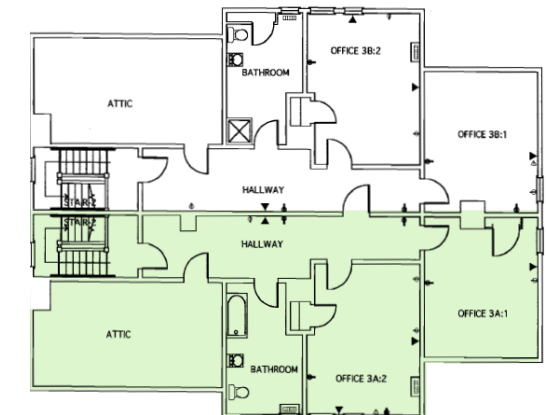
SECOND FLOOR



FIRST FLOOR



3RD FLOOR



SPACE HIGHLIGHTS

- 3-story cottage style office space
- Mix of office, lounge space, storage and meeting rooms
- Dedicated restrooms
- Enclosed front and rear porches



1016 LINCOLN BLVD 1ST FLOOR, 3,152 SF AVAILABLE



[Virtual Tour Here!](#)

SPACE HIGHLIGHTS

- Open office with mix of break out rooms
- Attached multipurpose room with in-floor power and abundant natural light
- Furniture not included - please inquire about available furniture options
- Access to shared kitchen, print/copy room, and other facilities on the campus
- Adjacent to main parking lot



1012-1016 TORNEY AVE

BLDG 1013 - FIRST FLOOR, 5,087 SF AVAILABLE

BLDG 1013 & 1014 - SECOND FLOOR, 13,321 SF AVAILABLE



First Floor



Second Floor



SPACE HIGHLIGHTS

First Floor

- Mix of workstations, private offices and meeting rooms.
- Furnished.
- Divisible to 3,585 or 1,502 SF

Second Floor

- Mix of workstations, private offices and meeting rooms.
- 2 outdoor patios
- Potentially divisible.



1012-1016 TORNEY AVE

BLDG 1013 - FIRST FLOOR, 5,087 SF AVAILABLE

BLDG 1013 & 1014 - SECOND FLOOR, 13,321 SF AVAILABLE





THANK YOU!

**For inquiries about any available office or
co-working space, please contact:**

Craig Zodikoff

czodikoff@cresa.com

BRE# 02195619

Jake Carson

jcarson@cresa.com

BRE# 01988539

Stephanie Hawkins

shawkins@cresa.com

BRE# 02273076

cresa 