

SNOWDEN CENTER

6925-6935 Oakland Mills Road, Columbia, MD 21045
Howard County



AVAILABILITIES

- 6935**
- Suite A-E (end cap): 6,896 SF up to 21,995 SF
 - Suite L: 3,828 SF
- 6925**
- Suite A: 2,889 SF
 - Suite C: 2,139 SF
- 5,028 SF
Contiguous

- Snowden Center comprises 145,423 SF located at the corner of Snowden River Parkway & Oakland Mills Road in the heart of the Baltimore-Washington corridor in affluent Columbia, MD (Howard County)
- Highly visible to Snowden River Parkway (41,151 ADT) & Oakland Mills Road (15,221 ADT)
- Join a diverse tenant mix catering to Howard County's highly educated population with an Average Household Income in excess of \$120,000
- Less than 0.5 Miles from Wegmans in Columbia

OWNED BY:



Spence Daw
sdaw@klnb.com
443-574-1429

David J. Fritz, CCIM, SIOR
dfritz@klnb.com
443-574-1410

Steele Stanwick
sstanwick@klnb.com
443-574-1420

6011 University Blvd, Suite 350
Columbia, MD 21043
klnb.com

NAI klnb

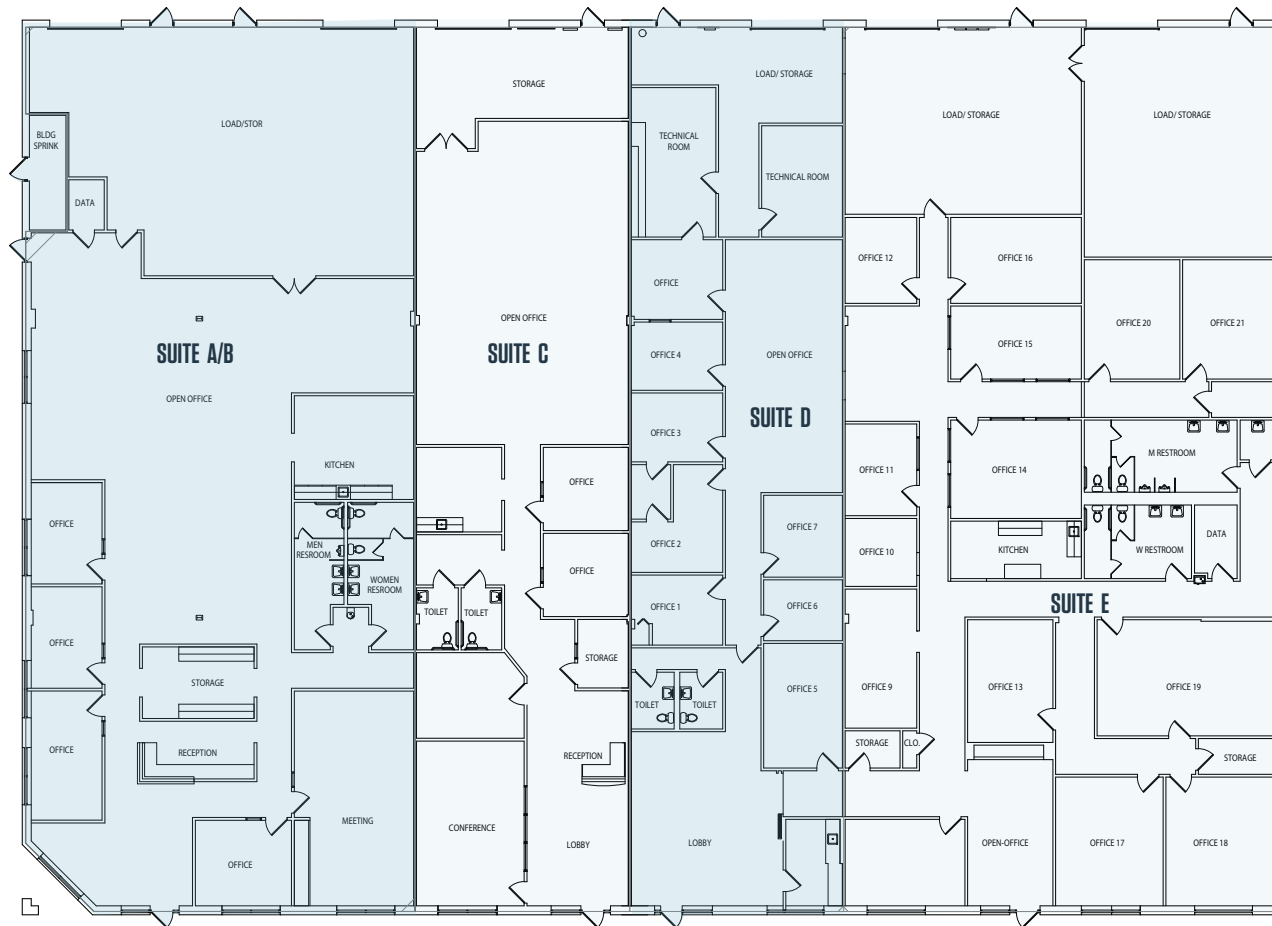
SNOWDEN CENTER

6925-6935 Oakland Mills Road, Columbia, MD 21045
Howard County

6935 OAKLAND MILLS ROAD

SUITES A-E: 21,995 SF

SUITES A/B - 6,896 S.F.
SUITES C - 3,777 S.F.
SUITES D/E - 11,322 S.F.



FLOOR PLANS

Spence Daw
sdaw@klnb.com
443-574-1429

David J. Fritz, CCIM, SIOR
dfritz@klnb.com
443-574-1410

Steele Stanwick
sstanwick@klnb.com
443-574-1420

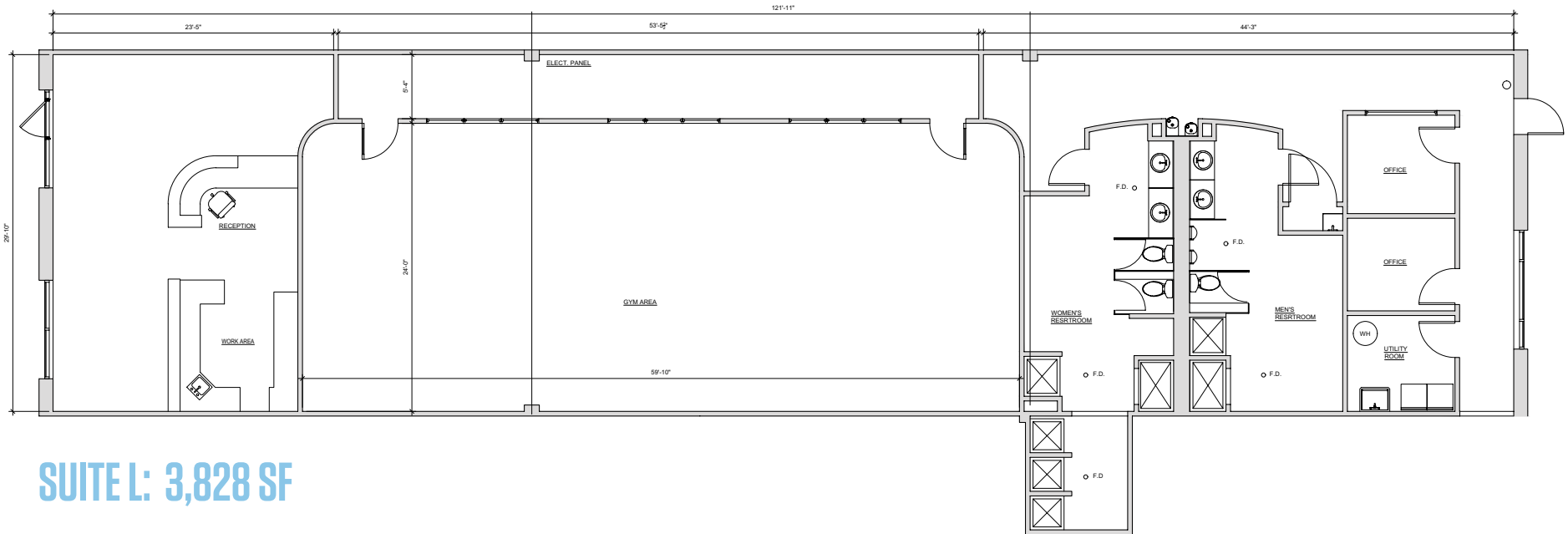
6011 University Blvd, Suite 350
Columbia, MD 21043
klnb.com



SNOWDEN CENTER

6925-6935 Oakland Mills Road, Columbia, MD 21045
Howard County

6935 OAKLAND MILLS ROAD



SUITE L: 3,828 SF

FLOOR PLANS

Spence Daw
sdaw@klnb.com
443-574-1429

David J. Fritz, CCIM, SIOR
dfritz@klnb.com
443-574-1410

Steele Stanwick
sstanwick@klnb.com
443-574-1420

6011 University Blvd, Suite 350
Columbia, MD 21043
klnb.com



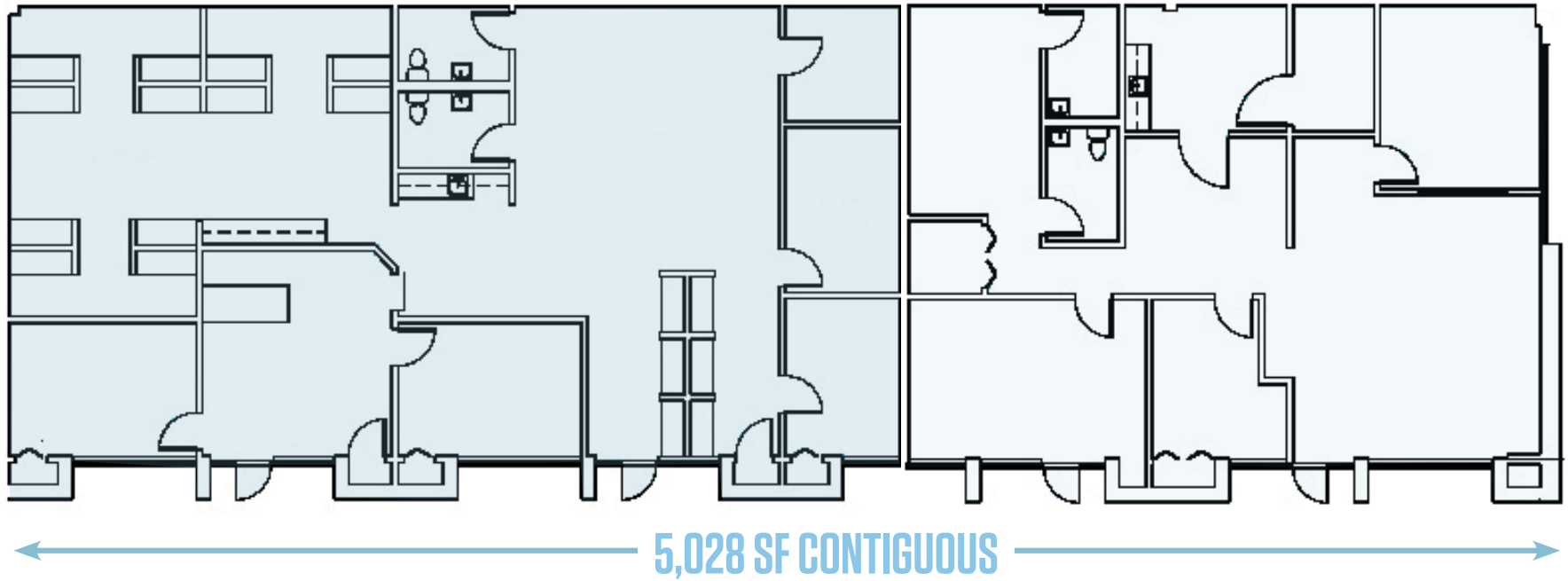
SNOWDEN CENTER

6925-6935 Oakland Mills Road, Columbia, MD 21045
Howard County

6925 OAKLAND MILLS ROAD

SUITE A: 2,889 SF

SUITE C: 2,139 SF



FLOOR PLANS

Spence Daw
sdaw@klnb.com
443-574-1429

David J. Fritz, CCIM, SIOR
dfritz@klnb.com
443-574-1410

Steele Stanwick
sstanwick@klnb.com
443-574-1420

6011 University Blvd, Suite 350
Columbia, MD 21043
klnb.com



SNOWDEN CENTER

6925-6935 Oakland Mills Road, Columbia, MD 21045
Howard County



Spence Daw
sdaw@klnb.com
443-574-1429

David J. Fritz, CCIM, SIOR
dfritz@klnb.com
443-574-1410

Steele Stanwick
sstanwick@klnb.com
443-574-1420

6011 University Blvd, Suite 350
Columbia, MD 21043
klnb.com



SNOWDEN CENTER

6925-6935 Oakland Mills Road, Columbia, MD 21045
Howard County



BIRDSEYE VIEW

Spence Daw
sdaw@klnb.com
443-574-1429

David J. Fritz, CCIM, SIOR
dfritz@klnb.com
443-574-1410

Steele Stanwick
sstanwick@klnb.com
443-574-1420

6011 University Blvd, Suite 350
Columbia, MD 21043
klnb.com



SNOWDEN CENTER

6925-6935 Oakland Mills Road, Columbia, MD 21045
Howard County

CLICK TO VIEW PROPERTY WEBSITE

For More Information, Please Contact:

Spence Daw
sdaw@klnb.com
443-574-1429

David J. Fritz, CCIM, SIOR
dfritz@klnb.com
443-574-1410

Steele Stanwick
sstanwick@klnb.com
443-574-1420

6011 University Blvd, Suite 350
Ellicott City, MD 21043

klnb.com

 facebook.com/KLNB

 [@KLNBLLC](https://twitter.com/KLNBLLC)

 linkedin.com/company/klnb

 instagram.com/klnbllc

While we have no reason to doubt the accuracy of any of the information supplied, we cannot, and do not, guarantee its accuracy. All information should be independently verified prior to a purchase or lease of the property. We are not responsible for errors, omissions, misuse, or misinterpretation of information contained herein and make no warranty of any kind, express or implied, with respect to the property or any other matters.

NAI klnb