

Former Shadow Mountain Behavioral Health Facility

6262 South Sheridan Road | Tulsa, OK 74133

For Sale



Contact Us

Tony Aaronson
Senior Associate
+1 918 630 8555
tony.aaronson@cbre.com

Leslie Kirkpatrick, MBA
Senior Associate
+1 918 557 2231
leslie.kirkpatrick@cbre.com



© 2024 CBRE, Inc. All rights reserved. This information has been obtained from sources believed reliable, but has not been verified for accuracy or completeness. You should conduct a careful, independent investigation of the property and verify all information. Any reliance on this information is solely at your own risk. CBRE and the CBRE logo are service marks of CBRE, Inc. All other marks displayed on this document are the property of their respective owners, and the use of such logos does not imply any affiliation with or endorsement of CBRE. Photos herein are the property of their respective owners. Use of these images without the express written consent of the owner is prohibited.

Former Shadow Mountain Behavioral Health Facility

6262 South Sheridan Road
Tulsa, OK 74133

Medical Office or Potential Redevelopment Site



Former Shadow Mountain Behavioral Health Facility

6262 South Sheridan Road | Tulsa, OK 74133



Overview

The Former Shadow Mountain Behavioral Health Facility at 6262 South Sheridan Road contains approximately 76,000 Square Feet and sits on 19.25 acres that offer a unique Owner-Occupant or redevelopment opportunity. Approximately half of the site is developed with the back half being wooded/undeveloped.

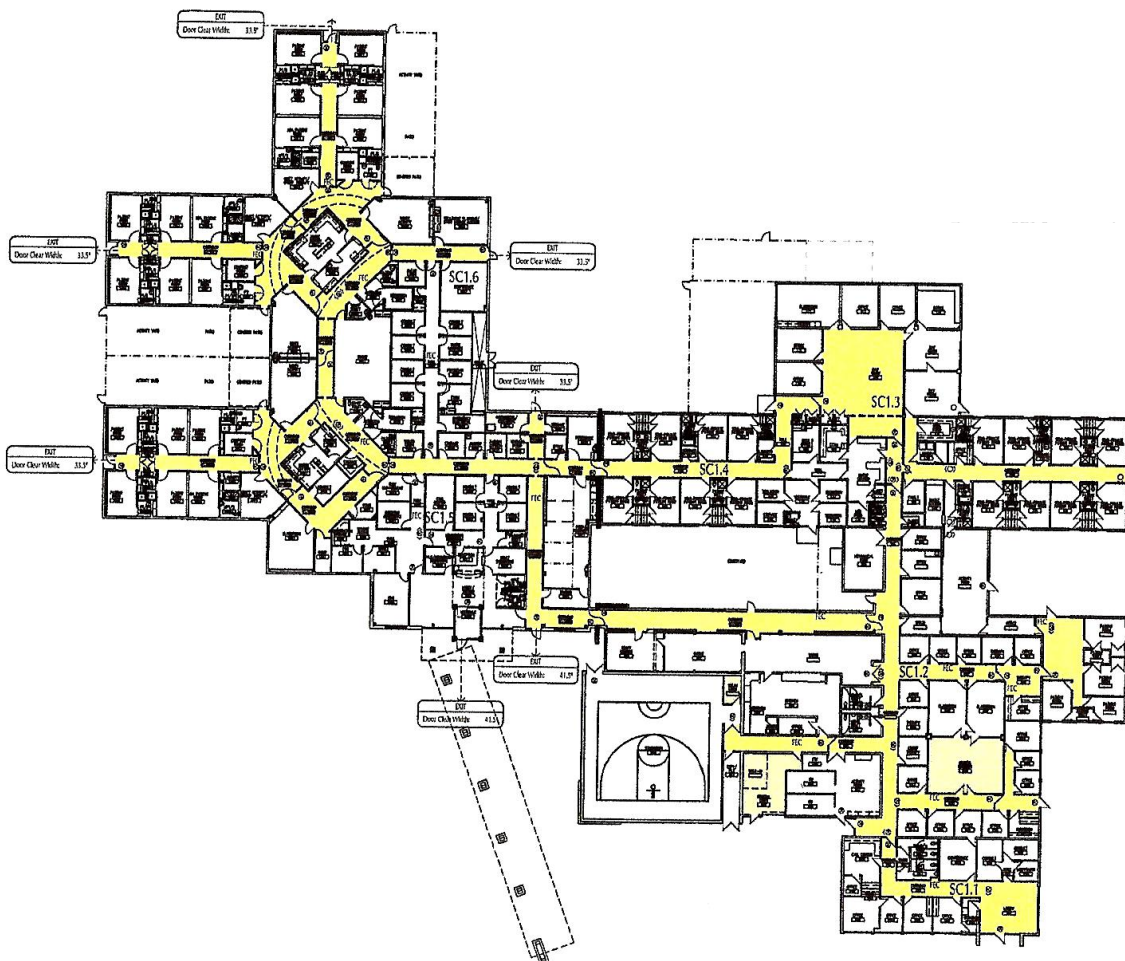
Building	Square Footage	Year Remodeled	Use
Building A	±24,203 Gross SF	2014	Medical Office
Building B	±30,901 Gross SF	1995	Medical Office, Former Nursing Home
Building C	±9,652 Gross SF	1995	Medical Office, Former Nursing Home
Building D	±9,624 Gross SF	1995	Medical Office, Former Nursing Home
Building E	±1,620 Gross SF		Administrative Office Space

For Sale

Property Highlights

- +Close proximity to Saint Francis Hospital
- +Sheridan Road Frontage and Signage

- +Nearby Restaurants and Retail



76K
Square Feet

19.25
Acres

RS3
High Density
Residential Zoning