



Lightwell

Opening December 2019

wework

Ultra-modern Development in Revitalized Downtown Kansas City

Total Sq. ft

663,656

WeWork Sq. ft

96,930

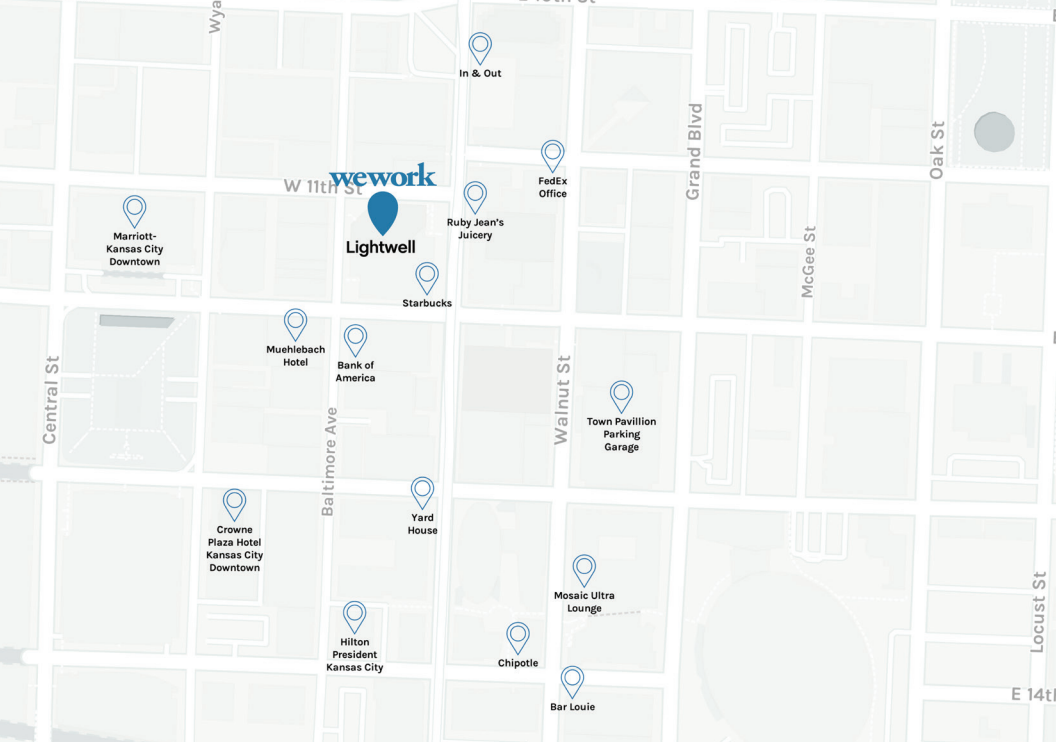
Floors

30

Overview

Lightwell is ultra-modern development in Downtown Kansas City. The design of this 30-story tower was completely reimagined in 2019 under the direction of HOK Architecture. The \$16M project includes a hotel style lobby with luxe seating, private tenant lounge, multiple room conference facility, state of the art fitness center, enhanced security, and first-class dining options—all on the premises.

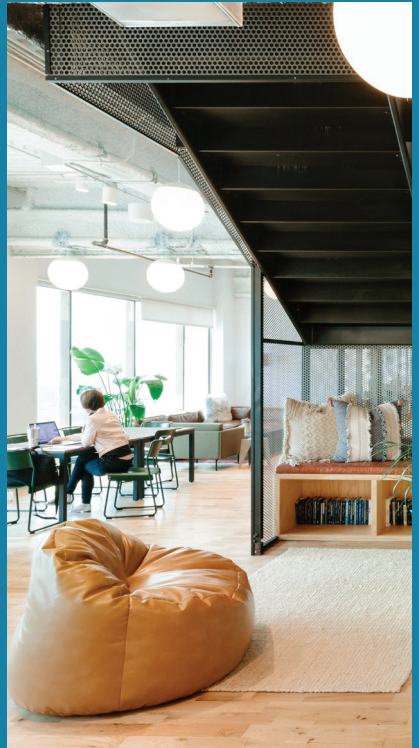
Lightwell is located in the center of the revitalized Downtown Kansas City. Also known as the traditional Financial District, this area is also home to a slew of new residential developments. Trendy restaurants and bars are also popping up every month, making it easy to plan client lunches or team outings. Grab a bite with colleagues at Milwaukee Delicatessen, or blow off some steam after work at The Peanut, one of KC's most beloved dive bars. Plus, commuting to Lightwell is simple with a streetcar stop at the front door and multiple transportation and parking options close by.



Location

Nearby Transportation
Kansas City
International Airport

Drive Time; Distance
28 min; 19.3 mi



Floor Plans

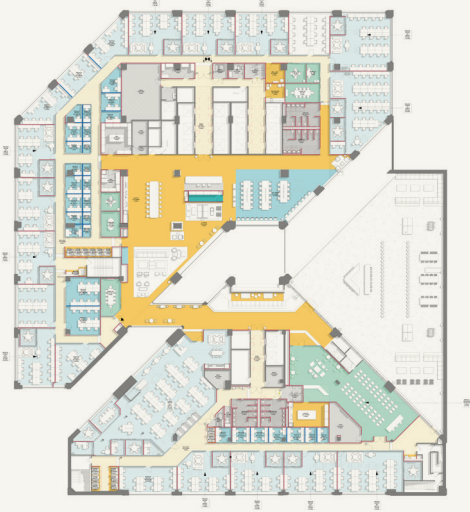
Floor 3

46,540 RSF



Floor 4

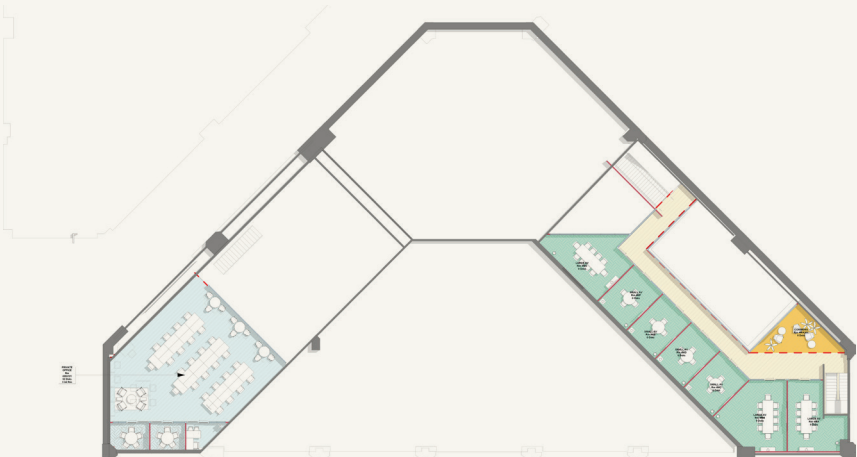
46,540 RSF



Floor Plans

Floor 4 Mezzanine

3,850 RSF





Example WeWork Common Area



Lightwell

1100 Main Street
Kansas City, MO 64105
[wework.com](https://www.wework.com)

wework