



THE MACHAVEN

306 S Grace Street
Rocky Mount, NC 27801
For Sale or Lease

SIMMONS
& HARRIS

TABLE OF CONTENTS

- 3** Executive Summary
- 4** Property Overview
- 5** Location Highlights
- 6** About Rocky Mount
- 7-9** Interior/Exterior Photos
- 10** Contact Info

**OFFERED FOR
SALE OR LEASE BY**

**SIMMONS
& HARRIS**

Executive Summary

The Machaven was built by Ice Magnate James William Hines for his wife, Mary Matilda MacEntyre Hines and was completed in 1908. The house is a replica of the childhood home of Mary Matilda MacEntyre in Rutherford County, NC, therefore the name Machaven (Haven for the MacEntyre's). J.W. Hines owned a thriving ice business and was known by many as The Ice King. The Machaven was the home to four generations of the Hines family. The property, also known as the Hines House, was added to the National Register of Historic Places in 1980. In the late 1980's, the house was sold and became The City Club. Many Rocky Mount natives remember dining and celebrations at the The City Club in the 1990's through early 2000's. With a rich history spanning more than 100 years, The Machaven has been transformed into a luxury wedding and event venue. In addition to the picturesque building, The Machaven has expansive, beautifully maintained grounds, and is located in the heart of historic downtown Rocky Mount.

themachaven.com



**SIMMONS
& HARRIS**

Property Overview

Address 306 S. Grace Street

City Rocky Mount, NC

Total Sq. Ft. 6,437

Acres 1.55

Year Built 1908

Property Use Event Space

Utilities City of Rocky Mount

Price \$550,000



**SIMMONS
& HARRIS**

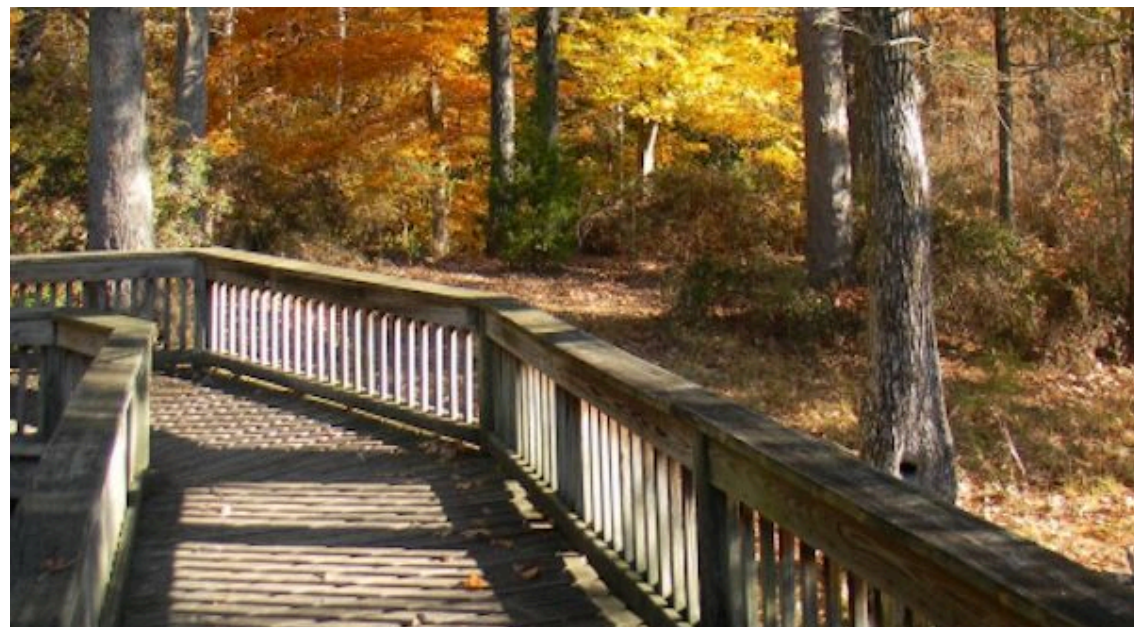
Location Highlights

- Near Iconic Rocky Mount Mills landmark, known for great food and live events
- Minutes from Rocky Mount Event Center
- Close proximity to City Hall
- Nearby expressway I-64/87 with 45,000 VPD
- High visibility on Grace Street in Downtown
- Close proximity to recently renovated downtown residential developments (Grace Street Flats, Studio 13, Fleming Apartments, Davis Lofts)



SIMMONS
& HARRIS

About Rocky Mount, NC

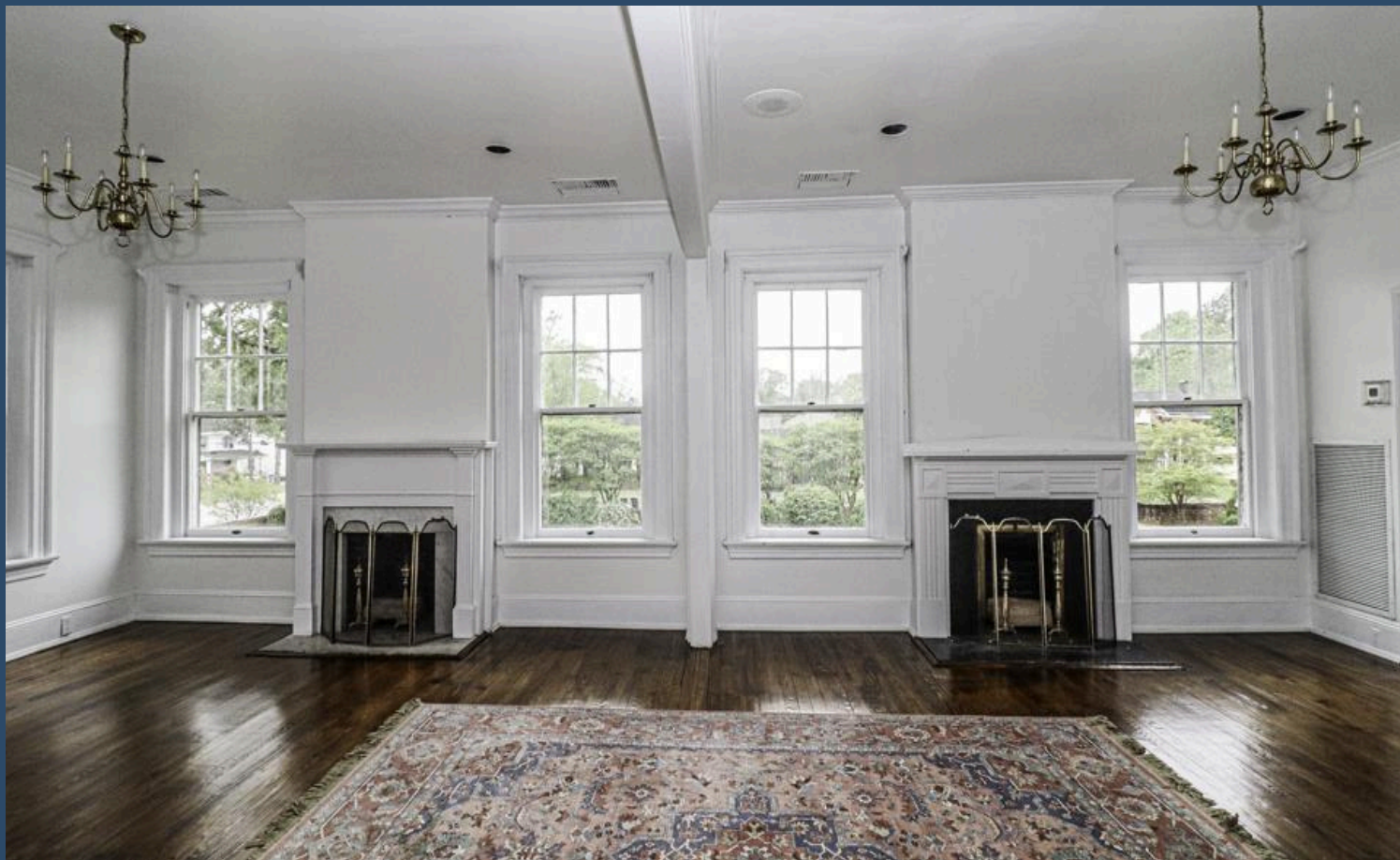


Rocky Mount splits Edgecombe and Nash counties in North Carolina. It is the 19th-most populous city in North Carolina. Incorporated in 1867, the community at the falls of the Tar River that became the city of Rocky Mount dates from the middle of the 1700s. Historically strong in rail transportation, textiles, and agriculture, the economy of Rocky Mount has diversified into biomedical pharmaceuticals, manufacturing, and logistics.

Located near the juncture of a number of major highways and railway, distribution and logistics are important to local business. The area has a strong service sector and a number of financial and customer support centers are located here.

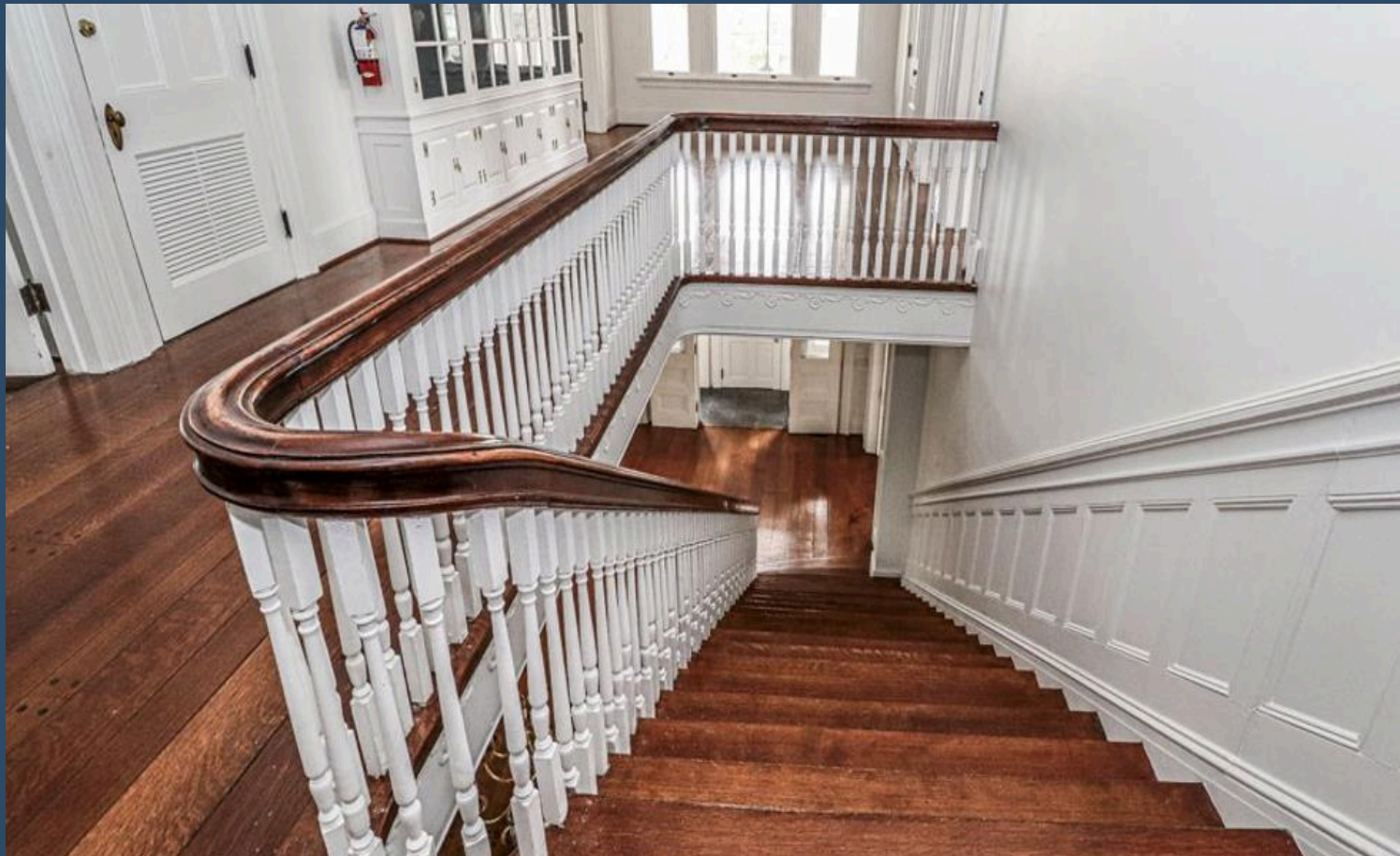
Rocky Mount is a mere 50 miles from Raleigh and the greater Research Triangle. This has helped attract new companies to Rocky Mount seeking a skilled labor pool and a lower costs of living and doing business. Rocky Mount is also a regional shopping destination with many big-box retailers and specialty shops located in the city. Rocky Mount's shopping centers are generally congregated along and around US 301 (Wesleyan Boulevard). Large centers include Golden East Crossing, Sutters Creek Plaza, Cobb Corners, and Westridge Center.

The Tar River Trail is a 7-mile greenway running east to west along the namesake river that connects with multiple parks, city landmarks, and sports complex, with designated boat ramps for recreational paddling trips on the river. Notable among the connected parks is City Lake Park, built in 1937 during the Great Depression by the Works Progress Administration, and the 57-acre biodiverse Battle Park centered on the falls of the Tar River. The trail also includes a 220-foot long clear-span wooden bridge believed to be the longest such wooden bridge in the United States.



INTERIOR
PHOTOS

SIMMONS
& HARRIS



INTERIOR
PHOTOS
(cont.)

SIMMONS
& HARRIS



EXTERIOR
PHOTOS

**SIMMONS
& HARRIS**

CONTACT

John Lea

jlea@sh-cre.com

252-917-4921

Simmons & Harris, Inc.

1175 Jeffreys Rd

Rocky Mount, NC 27804

SIMMONS
&HARRIS

CONFIDENTIALITY AGREEMENT

The information contained in this Offering Memorandum is proprietary and strictly confidential. It is intended to be reviewed only by the party(ies) receiving it from Simmons & Harris, Inc. and should not be made available to any other person or entity without the written consent of Simmons & Harris, Inc. If you are not the intended recipient, you are hereby notified that any retention, dissemination, duplication, forwarding, copying, or taking any action in reliance on the contents of this information is strictly prohibited. If you receive this offering memorandum in error, whether in electronic or printed form, please notify the sender and destroy the document. This offering has been prepared to provide a summary of unverified information to prospective tenants, and to establish only preliminary level of interest in the subject property. The information contained herein is not a substitute for a thorough investigative process and tenant's due diligence.

Simmons & Harris, Inc. has not made any investigation and makes no warranty or representation with respect to the income or expenses for the subject property, the future projected financial performance of the property, the size and square footage of the property and improvements, the presence or absence of contaminating substances, PCB's, asbestos, the compliance with state and federal regulations, the physical condition of the improvements thereon, or the financial condition or business prospects of any tenant, or tenant's plans. The information contained in this Offering has been obtained from sources we believe are reliable; however Simmons & Harris, Inc. has not verified, and will not verify, any of the information contained herein, nor has Simmons & Harris, Inc. conducted any investigation regarding these matters and makes no warranty or representation whatsoever regarding the accuracy or completeness of the information provided.