

## Storefront Retail



# 1203 2nd Avenue

## New York, NY 10065

### Overview:

**Location:** 2nd Avenue and 63rd Street

**Size:** Approximately 1,092 SF

**Term:** Negotiable

**Rental Rate:** Upon Request

**Occupancy:** Immediate

### Highlights:

- Ground floor retail
- High daily vehicle/ foot traffic count
- Anchored in a residential tower
- Close proximity to N, R, Q and 4, 5, 6 subway lines

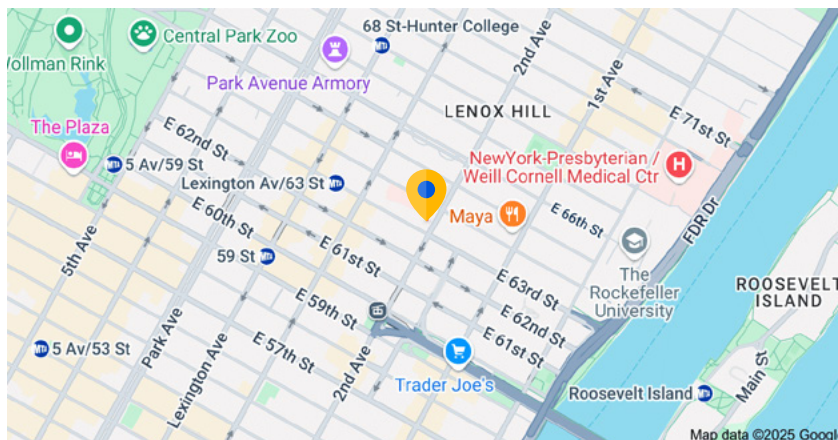


### For more information:

**Leslie Keidan**  
lkeidan@cresa.com  
917.923.8706 mobile

**Michael Doetsch**  
mdoetsch@cresa.com  
917.648.9192 mobile

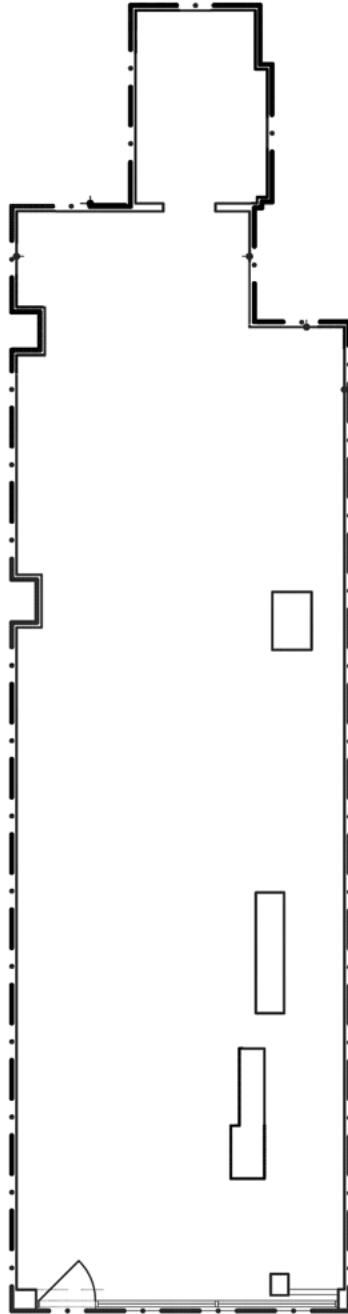
**Cresa**  
1133 Avenue of the Americas, 29th Floor  
New York, NY 10036



Even though obtained from sources deemed reliable, no warranty or representation, express or implied, is made as to the accuracy of the information herein, and it is subject to errors, omissions, change of price, rental or other conditions, withdrawal without notice, and to any special listing conditions imposed by our principals.

**Floor Plan**  
**1203 Second Avenue**  
**New York, NY**

**Approximately 1,092 SF**



2ND AVENUE

**For more information:**

**Leslie Keidan**  
lkeidan@cresa.com  
917.923.8706 mobile

**Michael Doetsch**  
mdoetsch@cresa.com  
917.648.9192 mobile

**cresa** 