

HISTORIC BANK BUILDING REDESIGNED FOR MODERN OFFICE SPACE

835 FIFTH AVENUE | SAN DIEGO | CA | 92101



HIGHLIGHTS

- ❖ Modern and Efficient Floorplates
- ❖ 4th Floor – ±4,421 RSF of Creative Space
- ❖ Abundance of Natural Light / Central Skylight
- ❖ Private Elevator Access to All Floors
- ❖ Well Located and Close to All Amenities that the Historic Gaslamp District has to offer.

HISTORY IN THE DETAILS

- ❖ Louis Bank of Commerce Building
- ❖ Established 1888
- ❖ Historic Architecture
- ❖ Original Ceilings
- ❖ Original Wood Floors

AVAILABILITIES

- ❖ Suite 203: ±920 RSF | \$2.50 psf / Month Full Service
- ❖ Suite 209: ±500 RSF | \$2.50 psf / Month Full Service
- ❖ Suite 303: ±300 RSF | \$2.40 psf / Month Full Service
- ❖ Suite 307: ±330 RSF | \$2.40 psf / Month Full Service
- ❖ Suite 308: ±330 RSF | \$2.40 psf / Month Full Service
- ❖ Suite 309: ±330 RSF | \$2.40 psf / Month Full Service
- ❖ Suite 312/313: ±515 RSF | \$2.30 psf / Month Full Service
- ❖ Suite 315: ±300 RSF | \$2.00 psf / Month Full Service

DEMOGRAPHICS

WORK IN THE 92101



Gaslamp
Quarter

INTERIOR PHOTOS



BUILDING HISTORY

Considered the Jewel of the Gaslamp and punctuated by two rising towers, San Diego's first granite building is an excellent example of Baroque Revival Architecture.



Built in 1888, the four-story structure housed the Bank of Commerce until 1893, when entrepreneur Isidor Louis opened an oyster bar in the ground floor, which became a favorite of the famous gambler and lawman, Wyatt Earp.



The upper floors later became known as The Golden Poppy Hotel, a notorious brothel run by fortuneteller Madame Cora.



The building has been recently purchased by a well-known local creative office owner, Paragon Real Estate Fund, who plans to update the top (3) floors tastefully for a creative office use. Paragon is focused on urban retail and mixed use properties. For more info, visit: www.paragoncompany.com

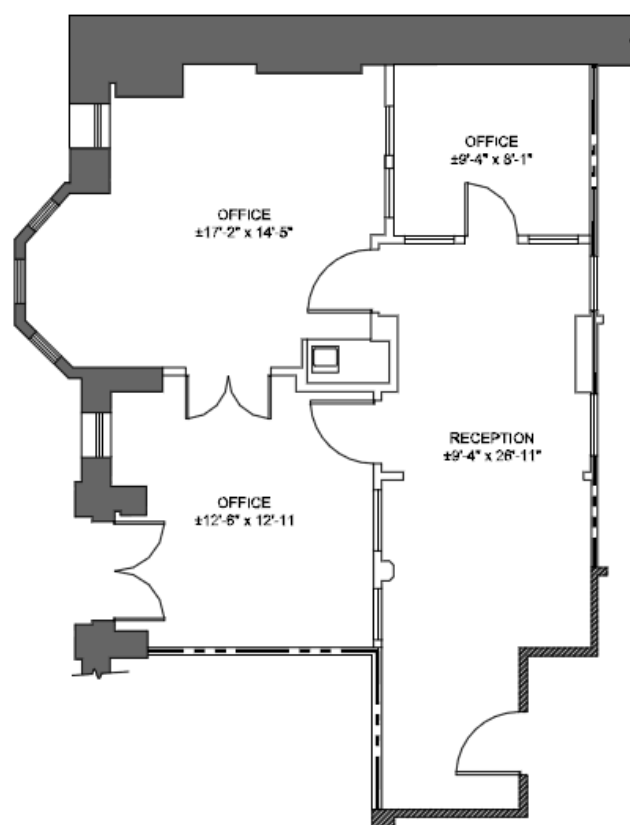
HISTORIC GASLAMP QUARTER



HORTON
PLAZA
PARK

Second FLOOR

Suite 203





Emmett Cahill

Lic #02033604

619-243-8470

ecahill@qfcre.com



REAL ESTATE

619-243-8454 www.qfcre.com 1495 Pacific Highway | Suite 450 | San Diego | CA | 92101

The information contained herein has been obtained from sources considered to be reliable, but no guarantee of its accuracy is made by this company. In addition, no representation is made respecting zoning, condition of title, dimensions, or any matters of a legal or environmental nature. Such matters should be referred to legal counsel for determination. Terms and conditions are subject to change without prior notice. Subject to errors and omissions.