

Warner Centre Retail

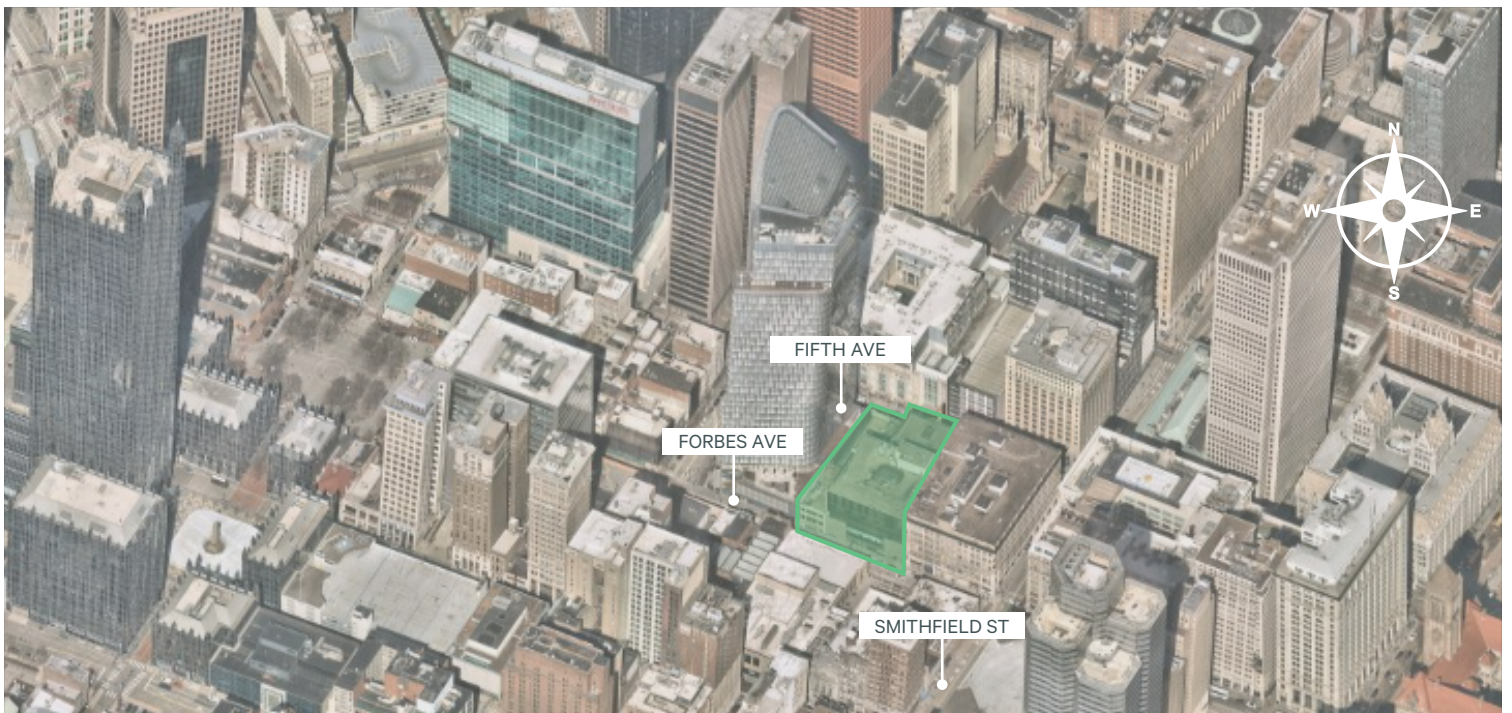
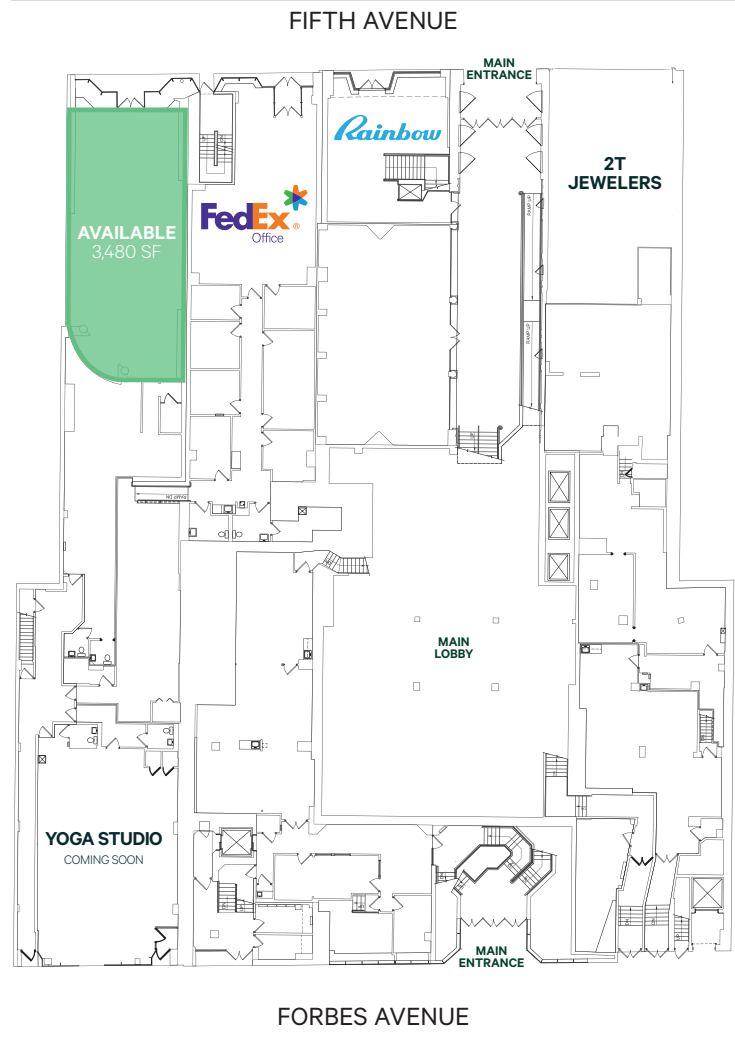
322 Fifth Avenue
Pittsburgh, PA 15222

3,480 SF Available in Historic Warner Centre



Property Information

- + **3,480 SF of street-level retail space on Fifth Ave**
 - Former Foot Locker location
- + Situated in the heart of Downtown's retail, office, and hotel renovation and redevelopment boom
- + Less than two blocks from both Market Square and Kaufmann's Grand, home to Target and Five Below
- + Located directly across from PNC Bank Headquarters and Point Park University Pittsburgh Playhouse



Warner Centre Retail

322 Fifth Avenue | Pittsburgh, PA 15222

For Lease



Contact Us

Jake Gold

Senior Associate
 +1 412 394 9830
 jake.gold@cbre.com

2024 Demographics	1 MILES	3 MILES	5 MILES	10 MILES
Population	22,053	155,238	394,581	888,534
Daytime Population	119,239	331,232	532,946	996,682
Households	9,417	70,014	182,394	399,489
Average Household Income	\$114,757	\$87,508	\$96,573	\$105,450

© 2024 CBRE, Inc. All rights reserved. This information has been obtained from sources believed reliable but has not been verified for accuracy or completeness. CBRE, Inc. makes no guarantee, representation or warranty and accepts no responsibility or liability as to the accuracy, completeness, or reliability of the information contained herein. You should conduct a careful, independent investigation of the property and verify all information. Any reliance on this information is solely at your own risk. CBRE and the CBRE logo are service marks of CBRE, Inc. All other marks displayed on this document are the property of their respective owners, and the use of such marks does not imply any affiliation with or endorsement of CBRE. Photos herein are the property of their respective owners. Use of these images without the express written consent of the owner is prohibited.