

STUDIO BUILDING



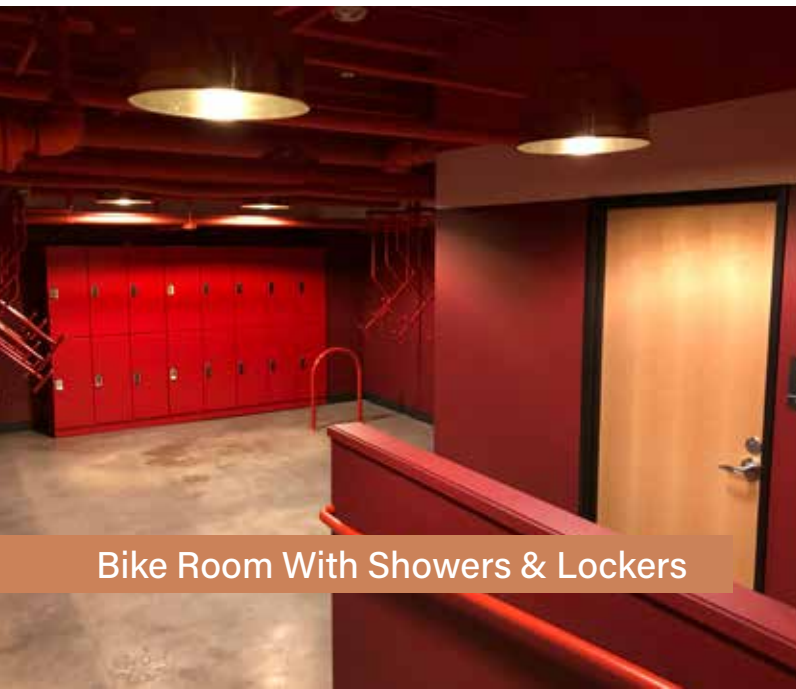
NEWMARK

919 SW Taylor Street, Portland, OR

A CREATIVE LANDMARK FOR 100 YEARS

Constructed in 1926, The Studio Building was built to serve as a haven for musicians and actors and Portland's growing creative class. Today, this historic Downtown landmark has been transformed into captivating office space, radiating both historic charm and contemporary workspace appeal.

With its nine stories offering breathtaking views of Director Park, The Studio Building effortlessly embodies Portland character, catering to the needs of modern-day Tenants with numerous nearby amenities. Beyond work, tenants find themselves immersed in a vibrant environment, surrounded by a variety of dining choices, arts and entertainment options, and convenient access to public transportation.



Bike Room With Showers & Lockers

BUILDING FEATURES



New spec suite designed by award-winning architects Ankrom Moisan



New energy-efficient operable windows



New bike storage facility with private showers



Prime transit access – one block from MAX and Portland Streetcar



Secure building and lockable floors



Well capitalized, local ownership with onsite property management



Across the street from Director's Park



Storage available in building



AVAILABILITIES

2ND FLOOR

Suite 210 - 1,196 RSF

Suite 250 - 2,009 RSF

3RD FLOOR

4,397 RSF

The Verdi – A Full-Floor Spec Suite, designed by Ankrom Moisan Architects

[CALL FOR RATES](#)

FLOORPLANS

2ND FLOOR



Suite 250 - 2,009 RSF

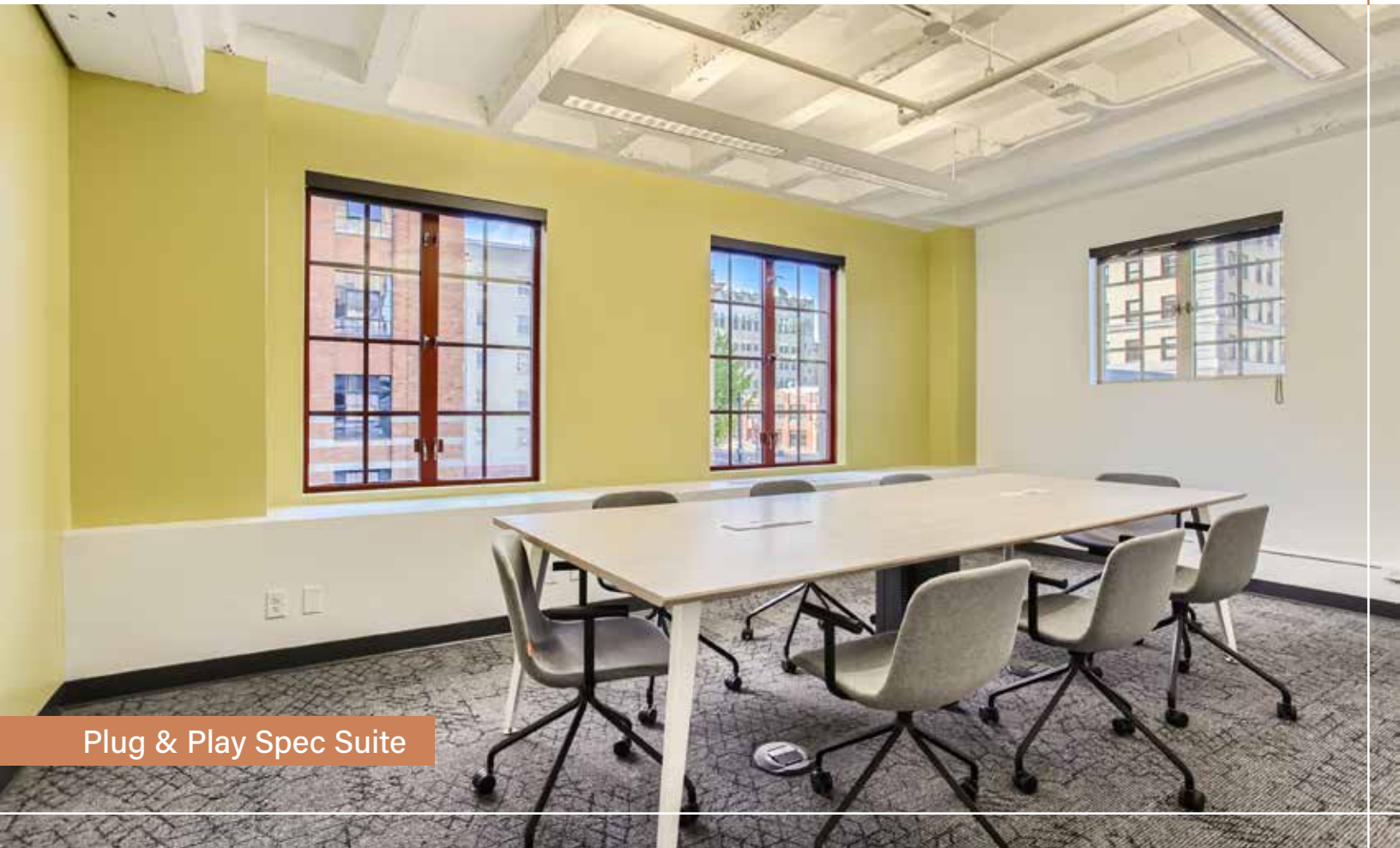
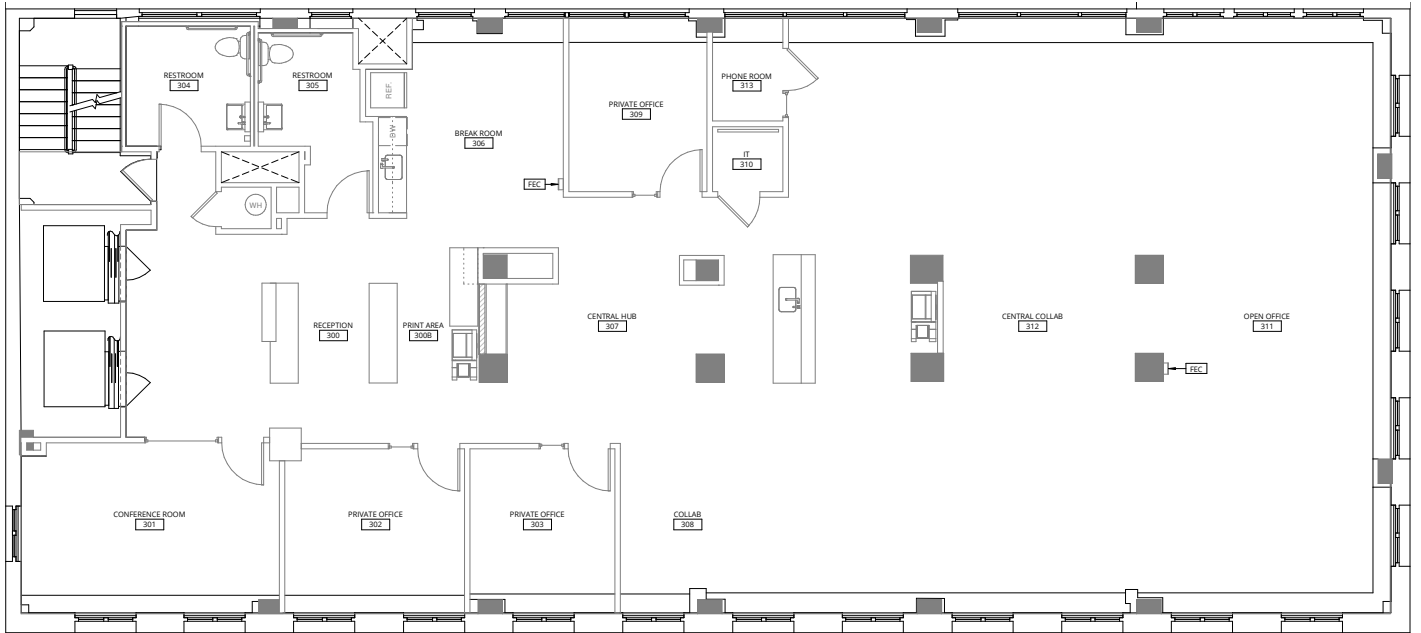
Suite 210 - 1,196 RSF

FLOORPLANS

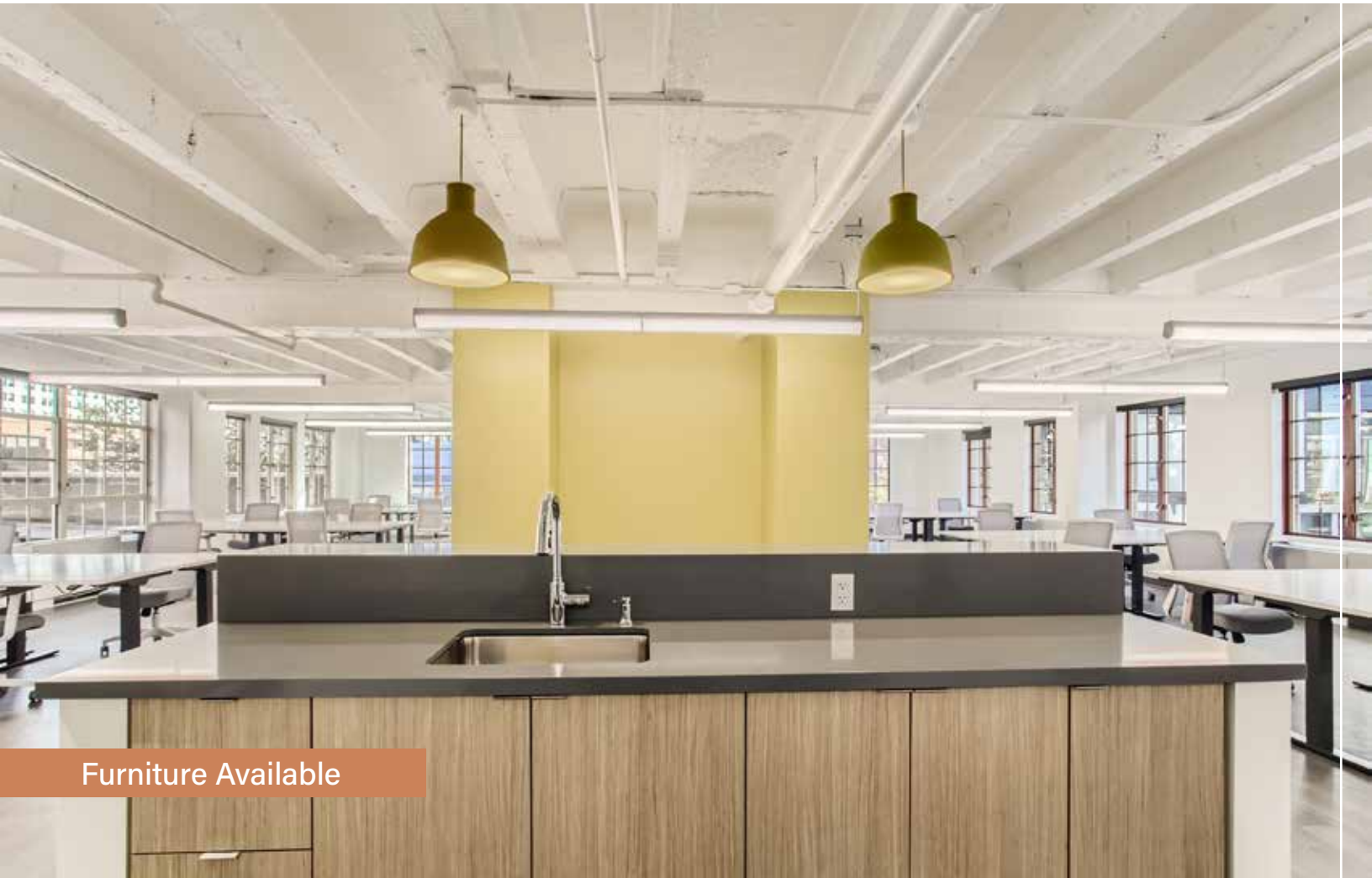
3RD FLOOR

4,397 RSF

The Verdi – A Full-Floor Spec Suite, designed by Ankrom Moison Architects



Plug & Play Spec Suite



Furniture Available

OUR NEIGHBORHOOD



WALK SCORE : 100



WALK SCORE : 98



WALK SCORE : 93

Michael Goetz
Associate Director
503-972-5511
Michael.Goetz@nrmk.com

Trozell Benware
Brokerage Services Specialist
971-266-4956
Trozell.Benware@nrmk.com

NEWMARK