



TROUT DANIEL & ASSOCIATES

BUY. SELL. LEASE. ADVISE.



Honeygo Retail Commons

Pad Sites Available for Lease

Northeast Corner of Philadelphia & Ebenezer Roads

10801 Philadelphia Rd & 5418 Ebenezer Rd, White Marsh, MD 21162

Call Us 410.435.4004 | Visit Us troutdaniel.com | 30 E. Padonia Road, Suite 504 Timonium, MD 21093



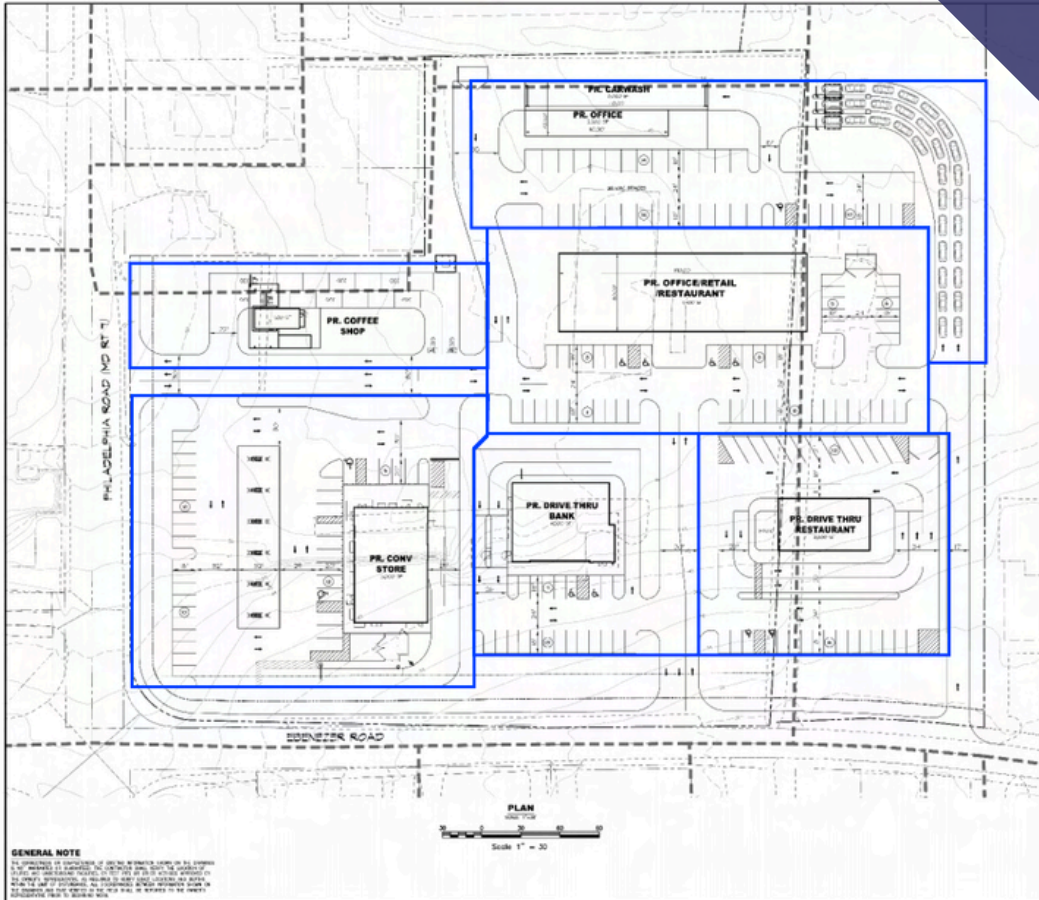
Development Plan

Trout Daniel & Associates is pleased to be a part of the development effort for this new retail project in the White Marsh area of Baltimore County. This 9-acre parcel located at the traffic light-controlled intersection of Philadelphia Road (Route 7) and Ebenezer Road (Cowenton Avenue), is being engineered and land-developed with the goal of creating up to six (6) retail pad sites. Potential uses include:

- Convenience Store with Fuel Services
- Banking Services with Drive-through lane
- Fast Food or Quick Serve Restaurants (QSR) with Drive-through lane
- Urgent Care and other medical uses
- Contemporary-design Carwash with up to a 140' long tunnel
- Coffee with Drive-through lane
- Other uses as permitted by Baltimore County's zoning regulations

Site Plan

Honeygo Retail Commons



MRA MORRIS & RITCHIE ASSOCIATES, INC.
 ENGINEERING, PLANNING, SURVEYING AND ARCHITECTURAL SERVICES
 100 S EAST GORPAC ROAD, SUITE 100
 ROCKFORD, ILL 61108
 815.392.1000
 FAX: 815.392.1788
 MRAD@MRA.COM
 COPYRIGHT 2010 MORRIS & RITCHIE ASSOCIATES, INC.
10801 PHILADELPHIA ROAD







SKETCH PLAN - 7

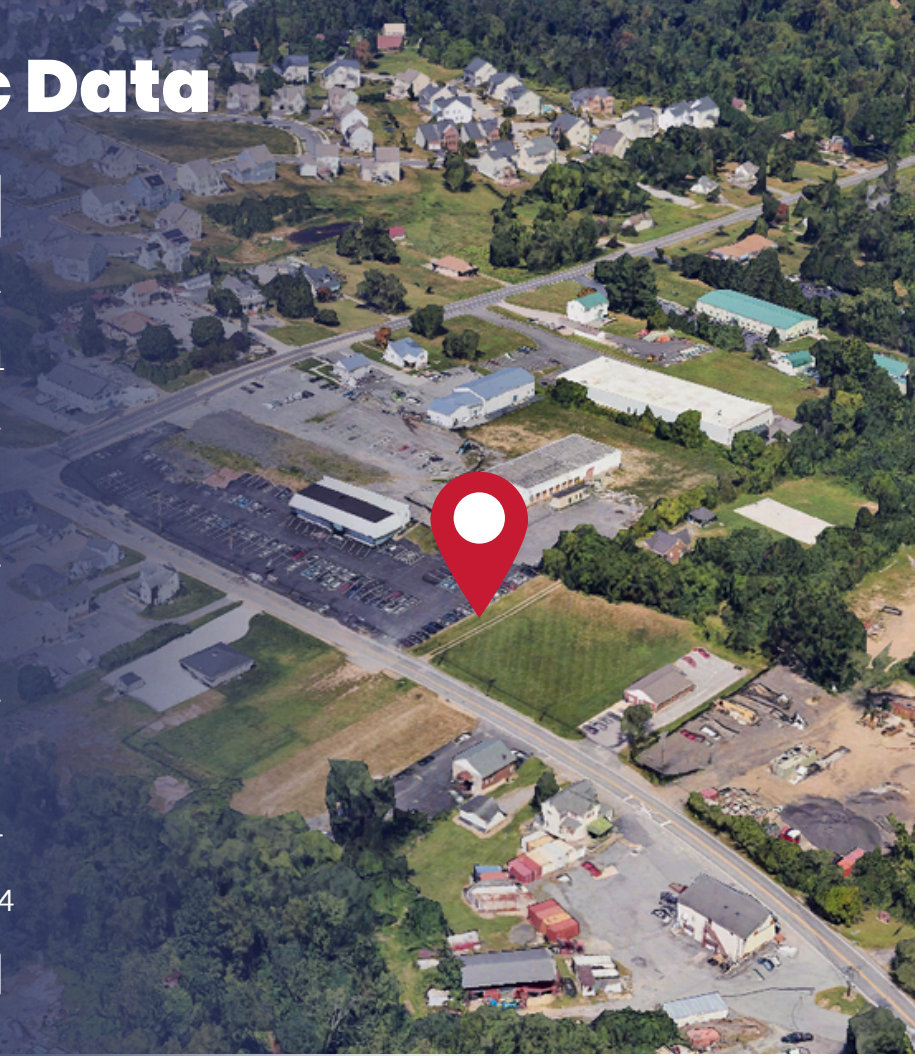
DATE: 10/19/10

NO.	REVISION	DATE	BY

GENERAL NOTE
 THE INFORMATION ON THIS PLAN IS BASED ON THE RECORDS ON FILE AT THE
 CITY OF PHILADELPHIA. IT IS THE RESPONSIBILITY OF THE CLIENT TO VERIFY THE
 ACCURACY OF THE INFORMATION PROVIDED. THE ARCHITECT ASSUMES NO LIABILITY
 FOR ANY ERRORS OR OMISSIONS. NO PROFESSIONAL SEALS OR SIGNATURES SHALL BE
 PLACED ON THIS PLAN UNLESS THE ARCHITECT HAS REVIEWED THE PLAN AND
 IS SURE THAT IT ACCURATELY REPRESENTS THE WORK ON WHICH HE OR SHE IS
 REGISTERED TO PRACTICE AS AN ARCHITECT.

Key Demographic Data

Radius	1 mile	3 mile	5 mile
Population			
	2,637	57,541	168,531
Total Households			
	925	22,661	64,181
Average Household Size			
	2.8	2.5	2.6
Median Age			
	40	39.3	42.2
Median Household Income			
	\$152,526	\$134,305	\$119,504
	Full Demographic Report		



Employment Density

3 mile radius



Total Businesses

2,115



Total Employees

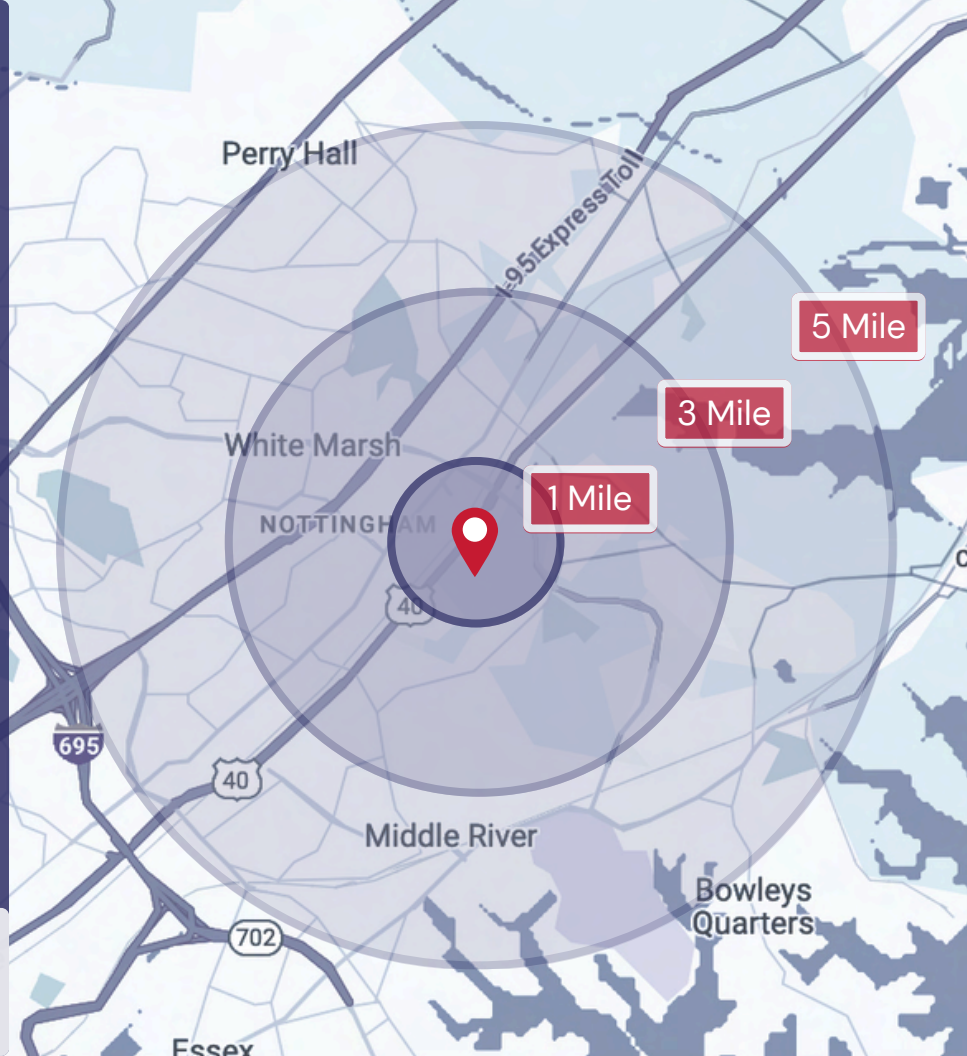
21,949

Employee Population per Business

10.4

Residential Population per Business

27.2



Market Aerial

Honeygo Retail
Commons

White Marsh, MD



10801 Philadelphia Road &
5418 Ebenezer Road

DUNKIN' Starbucks Kit Kat

Firenzie's

SAFeway

McDonald's Firenzie's PAPA JOHN'S

SUBWAY DUNKIN' BASKIN-IBBINS weis

weis

tropical CAFE Giant OUTBACK DOLLAR TREE

Starbucks

Crab Shack

FOOD LION

ALDI DOLLAR GENERAL BASKIN-IBBINS

Walmart

Wendy's DUNKIN' SUBWAY Pizza Hut

Auntie Anne's DQ POPEYES villa
Beverly's macy's JCPenney
CHARLEYS

Bob Evans BURGER KING Arby's

DUNKIN' McDonald's

crumbl TACO BELL CAVA Pizza Hut
Starbucks TJ-maxx FIVE BEL'W
Applebees Le Pain d'Or Target
FIVE GUYS noodles QDOBA
Therma's Chick-fil-A McDonald's SUBWAY

weis IHOP Golden Corral McDonald's

Chick-fil-A Giant

BURGERFI Bar Louie chili's Starbucks
COLD STONE FRIDAYS HUGO BOB LOBBSTER
PF CHANGS

BURGER KING BIG LOTS DOLLAR TREE

SUBWAY

DUNKIN' Pizza Hut

DUNKIN' SUBWAY

FAMILY DOLLAR DUNKIN'





Philadelphia Rd

 16645

Honeygo Run Apartments

Cowenton Ave

 6265

Honeygo Retail Commons

Pulaski Hwy

 33992

Ebenezer Rd

 10045

Philadelphia Rd

 16645



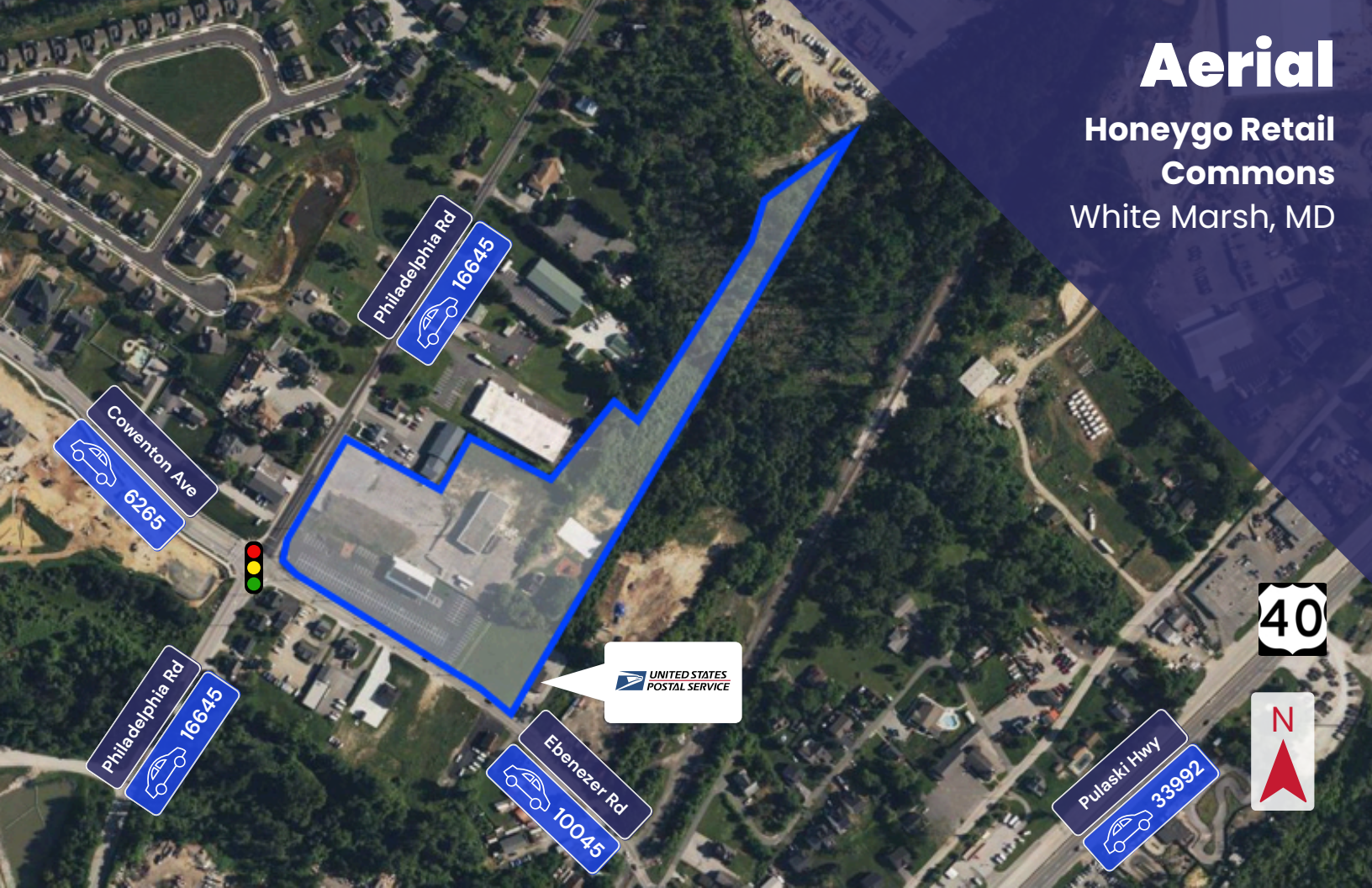
Local Road Network

Honeygo Retail Commons
White Marsh, MD

Aerial

Honeygo Retail Commons

White Marsh, MD



Philadelphia Rd
16645

Cowenton Ave
6265

Philadelphia Rd
16645

Ebenezer Rd
10045

UNITED STATES
POSTAL SERVICE

Pulaski Hwy
33992



Horizon Image

Honeygo Village Center

Honeygo Run Apartments

Honeygo Retail Commons




Holiday Inn

ExtraSpace
Storage

White Marsh Boulevard



Horizon Image

White Marsh Boulevard

ExtraSpace
Storage

TARGET

H
Holiday Inn

INTERSTATE
95

White Marsh
Mall

Honeygo Retail
Commons

Honeygo Run
Apartments

40



Honeygo Retail Commons

10801 Philadelphia Rd & 5418

Ebenezer Rd

White Marsh, MD



TROUT DANIEL & ASSOCIATES

BUY. SELL. LEASE. ADVISE.

Contact Us



30 E. Padonia Road, Suite

504 Timonium, MD 21093



Visit Us

troutdaniel.com



Call Us

410.435 .4004

The information contained in this marketing brochure has been obtained from sources we believe to be reliable; however, Trout Daniel & Associates LLC has not verified, and will not verify any of the information contained herein, nor has Trout Daniel & Associates LLC conducted any investigation regarding these matters and makes no warranty or representation whatsoever regarding the accuracy or completeness of the information provided. An agent indicated by an asterisk (*) has a direct or indirect ownership interest in this property.

Tim Hearn

Senior Vice President

410.458.3494

tim.hearn@troutdaniel.com

Faisal Ali

Associate

O: 443.921.9359 | C: 410.206.5970

faisalali@troutdaniel.com