

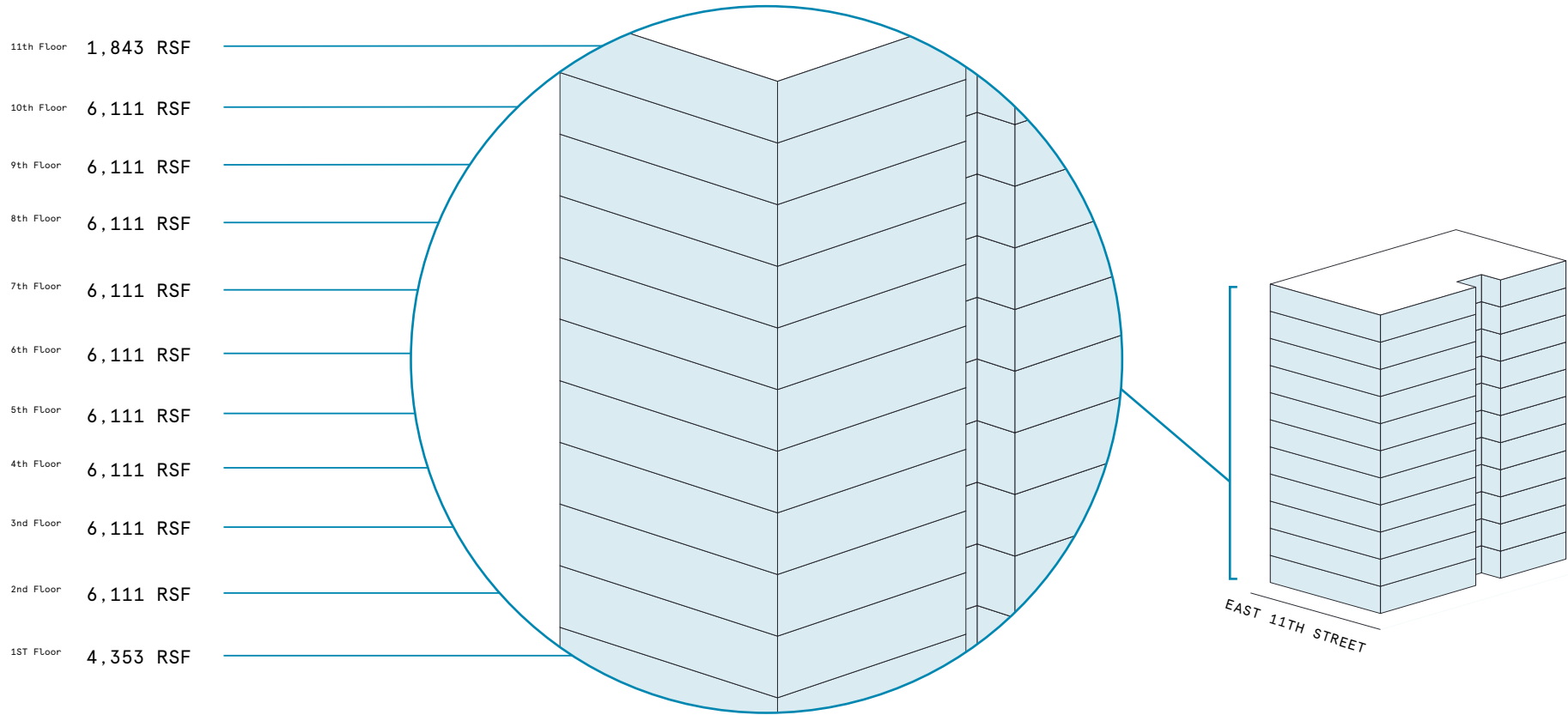


57 East 11th Street

Space availability summary

WeWork @ 57 East 11th Street
New York, NY

wework



61,195 RSF

TOTAL WEWORK RSF

57 East 11th Street

At a glance

Workspaces designed for productivity and creativity with flexible size & term

Dedicated, private suites available from 1,843 to 6,111 RSF

Multi-floor opportunity totaling 61,195 RSF

11

TOTAL BUILDING FLOORS

68,133

TOTAL BUILDING SQ FT



Bright red pipework crowns this space, featuring a mix of warm woods and neutral tones.



Modular coffee tables and sofas in cool blue and green are at the heart of this lounge.

Updated pre-war workspace in Greenwich Village

57 East 11th Street is located on a tree-lined street in Manhattan's coveted Greenwich Village neighborhood. Built in 1903, this historic 11-story building has undergone a complete redevelopment under the direction of Morris Adjmi Architects. The renovations include a new lobby and storefront, elevators, high ceilings with beautiful windows, and a rooftop terrace. WeWork's offering within 57 East 11th Street spans 11 floors and features a mix of spacious lounges, bright workspaces, and sleek private offices.



Exposed ceilings, pipework, and painted columns give this workspace an elevated industrial feel.

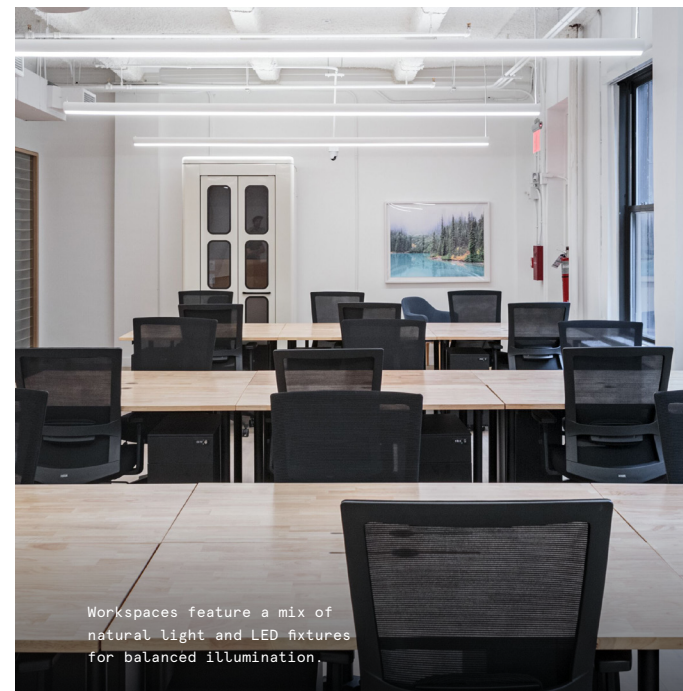
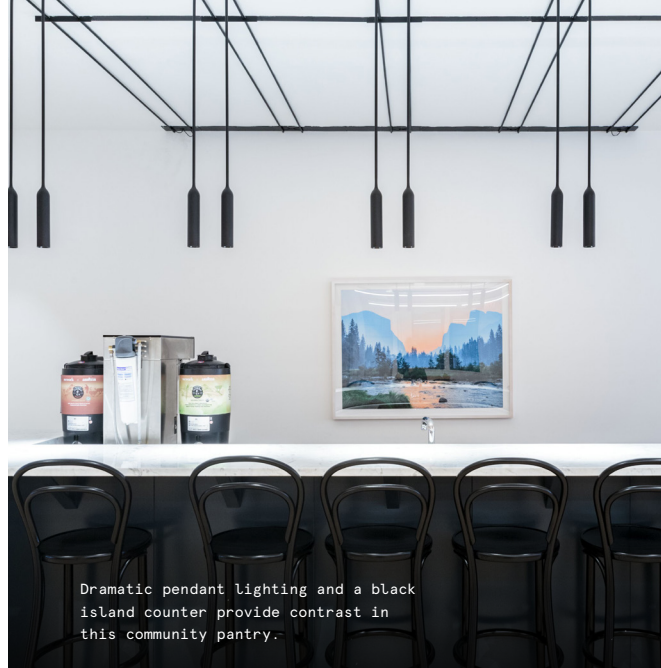


Custom millwork adds warmth and polish to common areas.

Historic charm meets modern design

57 East 11th Street utilizes a contemporary design approach and open floor plan while preserving original details from the historic building it calls home. The result is a fresh, open space with plenty of pre-war NYC character.

- Painted ductwork, supporting columns, and exposed ceilings evoke polished industrial flair
- A mix of warm wood tones is found in the space's floors, furnishings, and custom millwork
- The space's largely neutral palette is accented with curated artwork and rich blues, greens, and reds





A dark accent toned counter island stands out among the space's white walls and warm woods.



Custom millwork cabinetry, terrazzo countertops, and stainless steel appliances and surfaces are found in this community pantry.

On-site amenities

- 24/7 security
- Electronic keycard access
- US mail drop
- Phone booths
- Gender neutral restrooms
- Outdoor space
- Dog-friendly spaces
- Bicycle storage
- Supplemental HVAC and electric

Building specifications



Hours of operation

Monday - Friday: 9am-6pm



Security

Security 24/7



Fire strategy

Fully-sprinklered floors



Building history

Built in 1906
Renovated in 2020



Elevators

1 passenger elevator
1 freight elevator



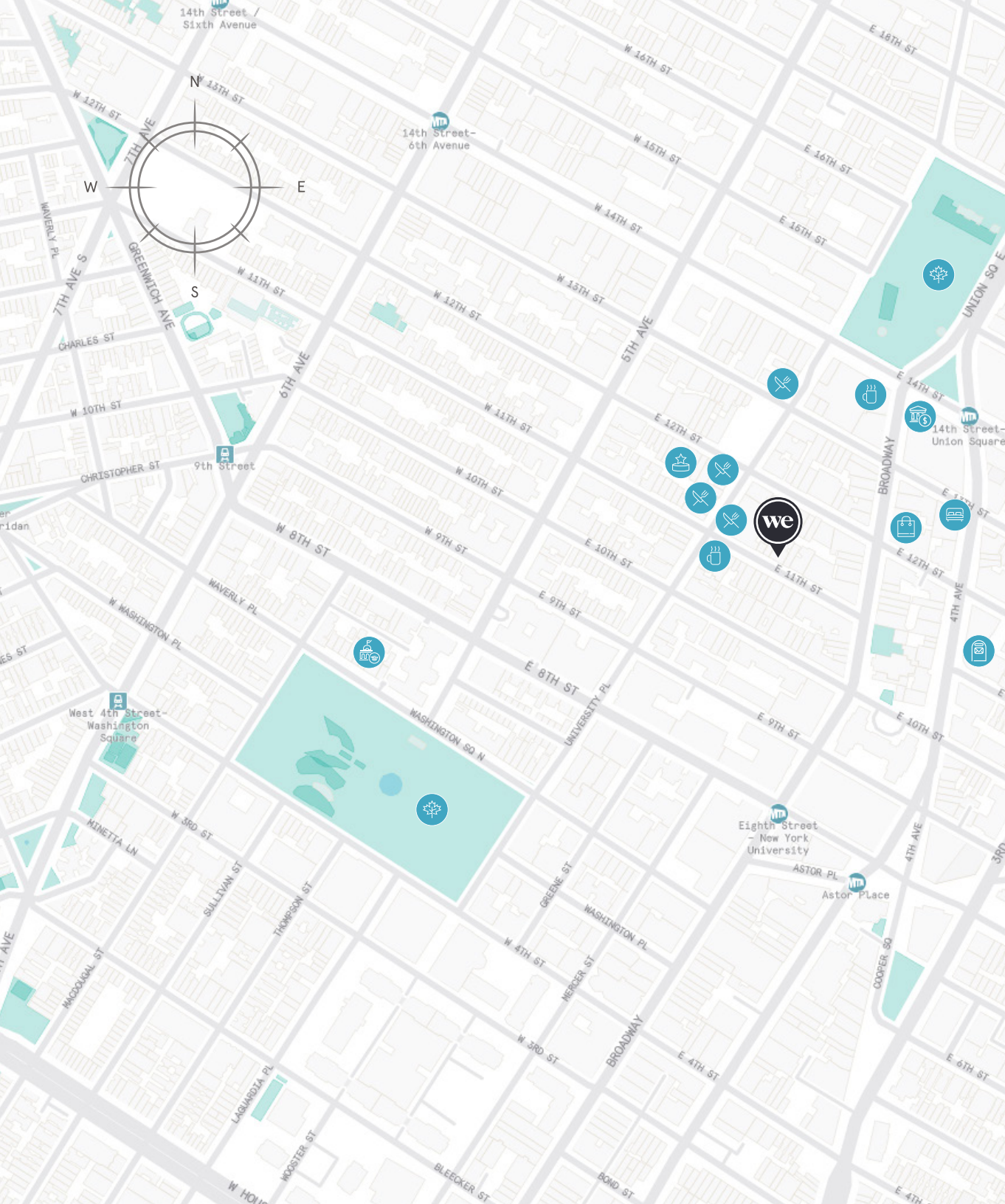
Building size

11 stories
68,133 SF



HVAC








Monday - Friday: 8am-7pm



Experience the heart of Greenwich Village

Located just south of Union Square, 57 East 11th Street sits in iconic Greenwich Village—a historically significant neighborhood that was the epicenter of the city’s 1960s counterculture movement. Members can visit local jazz clubs and off-Broadway shows after work, take a midday stroll through Washington Square Park or Union Square, or grab a bite at famed local spots like Caffe Reggio.

Distance to WeWork

Citi Bike - 14th Street and University	 Walk	3 min
8th Street & Broadway Station	 Walk	6 min
14th St.-Union Square Subway Station (4, 5, 6, L, N, Q, R, W)	 Walk	8 min
Icon Parking	 Walk	10 min
Penn Station (Commuter Rail, New Jersey Transit/LIRR Lines)	 Train	25 min
Newark Liberty International Airport	 Drive	60 min
JFK International Airport	 Drive	65 min

1st Floor

4,353 RSF




4

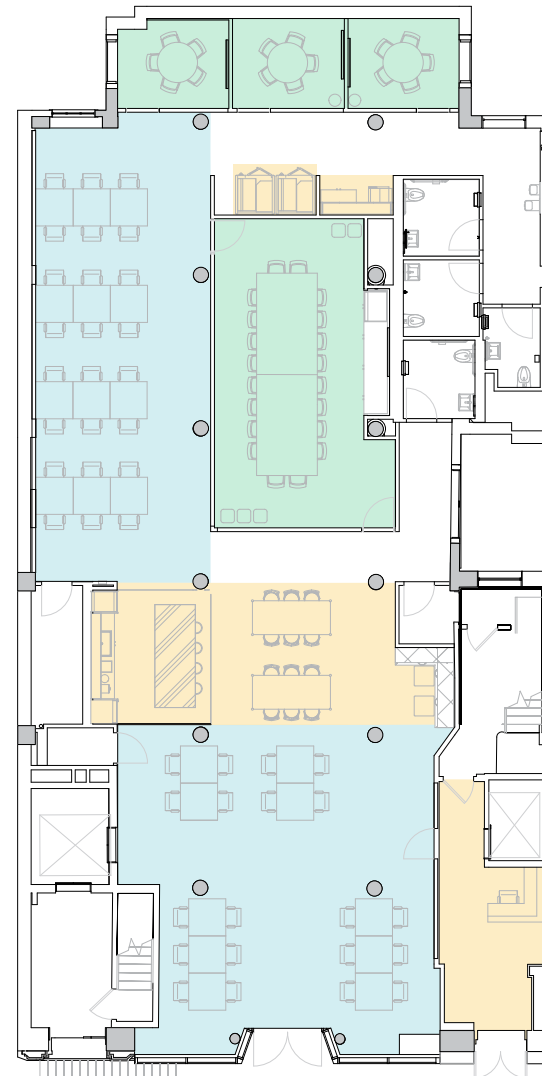
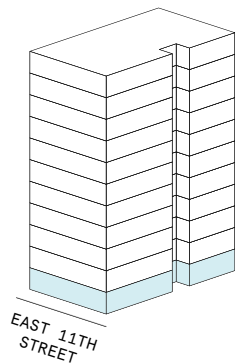
MEETING ROOM(S)

4

SHARED WORKSPACE(S)

LEGEND

-  MEETING ROOM
-  SHARED WORKSPACE
-  DEDICATED SPACE



EAST 11TH STREET



1st Floor

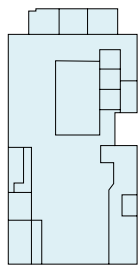
4,353 RSF

4,353 RSF Suite 01-100

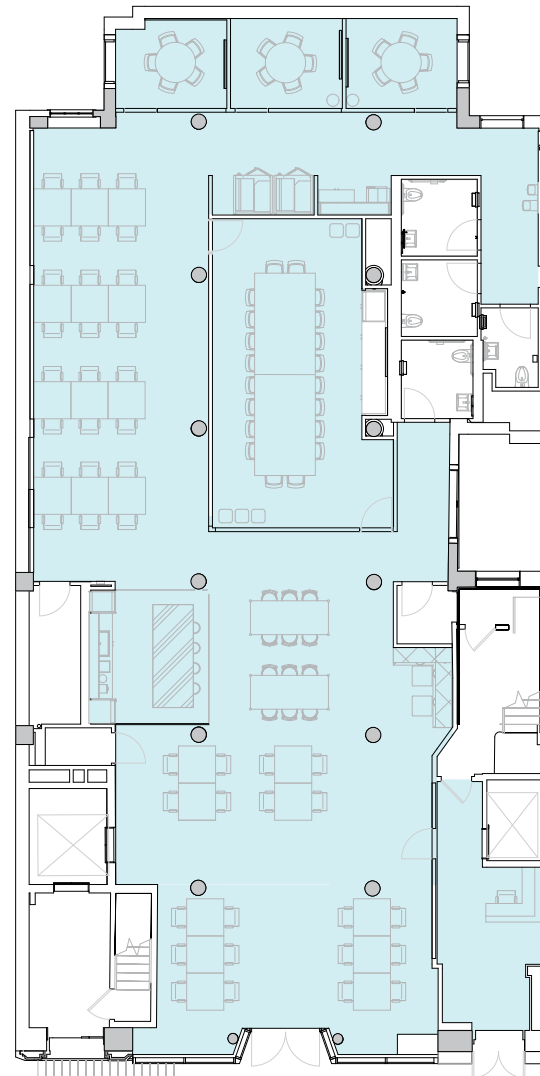
4
MEETING ROOM(S)

LEGEND

 DEDICATED SPACE



EAST 11TH STREET



EAST 11TH STREET

2nd Floor

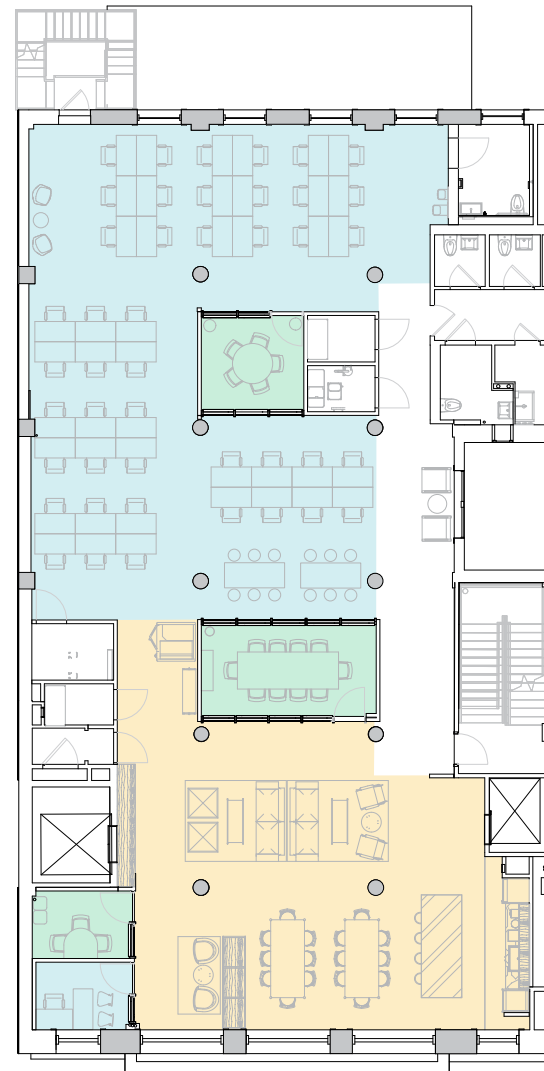
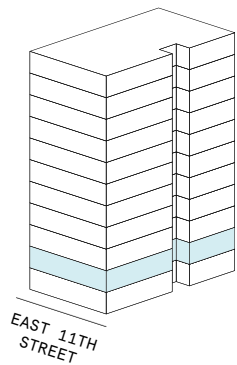
6,111 RSF

3
MEETING ROOM(S)

1
SHARED WORKSPACE(S)

LEGEND

- MEETING ROOM
- SHARED WORKSPACE
- DEDICATED SPACE



EAST 11TH STREET



2nd Floor

6,111 RSF

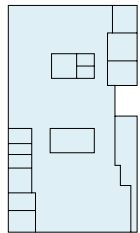
6,111 RSF Suite 02-100

3
MEETING ROOM(S)

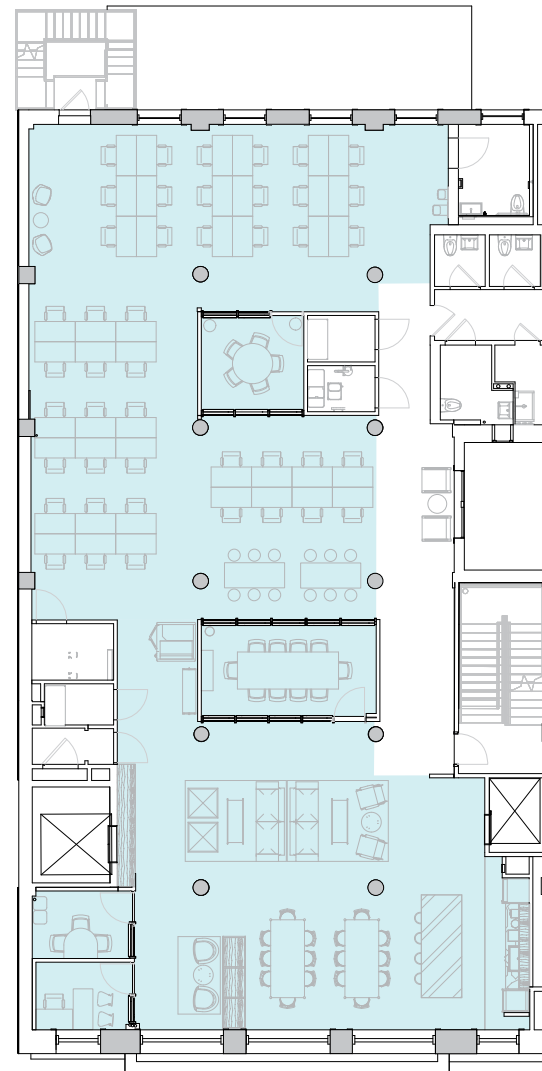
1
PRIVATE OFFICE(S)

LEGEND

 DEDICATED SPACE



EAST 11TH STREET



EAST 11TH STREET

3rd Floor

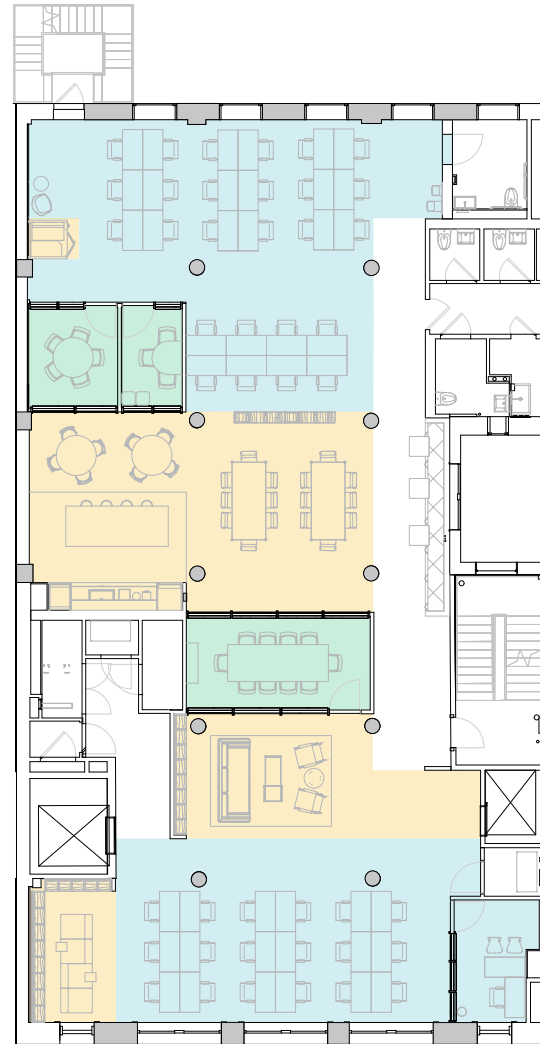
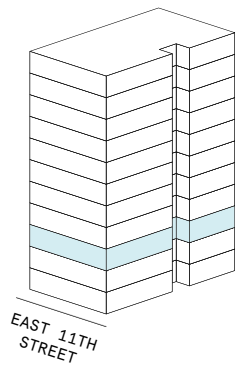
6,111 RSF

3
MEETING ROOM(S)

4
SHARED WORKSPACE(S)

LEGEND

- MEETING ROOM
- SHARED WORKSPACE
- DEDICATED SPACE



EAST 11TH STREET

3rd Floor

6,111 RSF

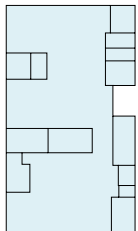
6,111 RSF Suite 03-100

3
MEETING ROOM(S)

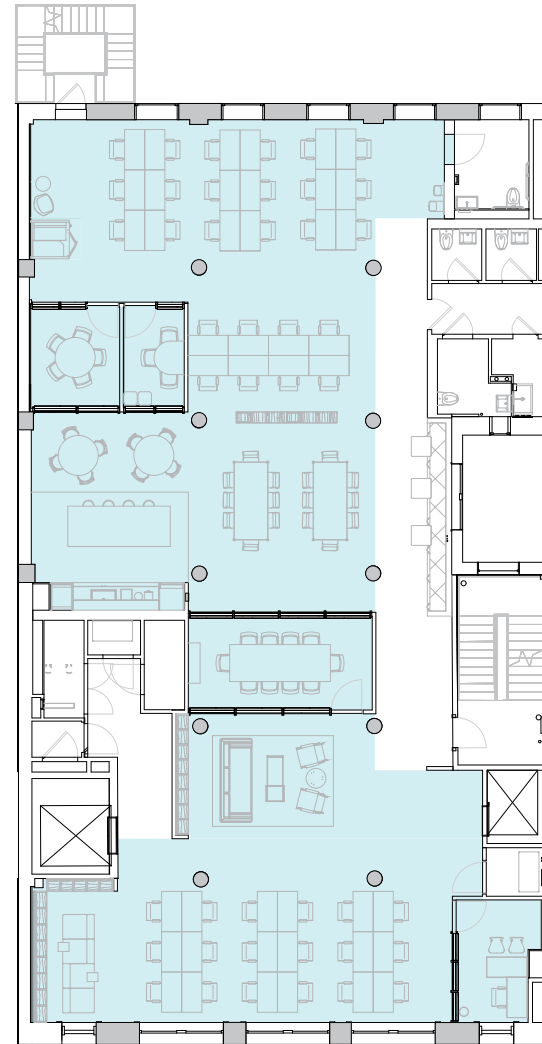
1
PRIVATE OFFICE(S)

LEGEND

 DEDICATED SPACE



EAST 11TH STREET



EAST 11TH STREET

4th Floor

6,111 RSF

3

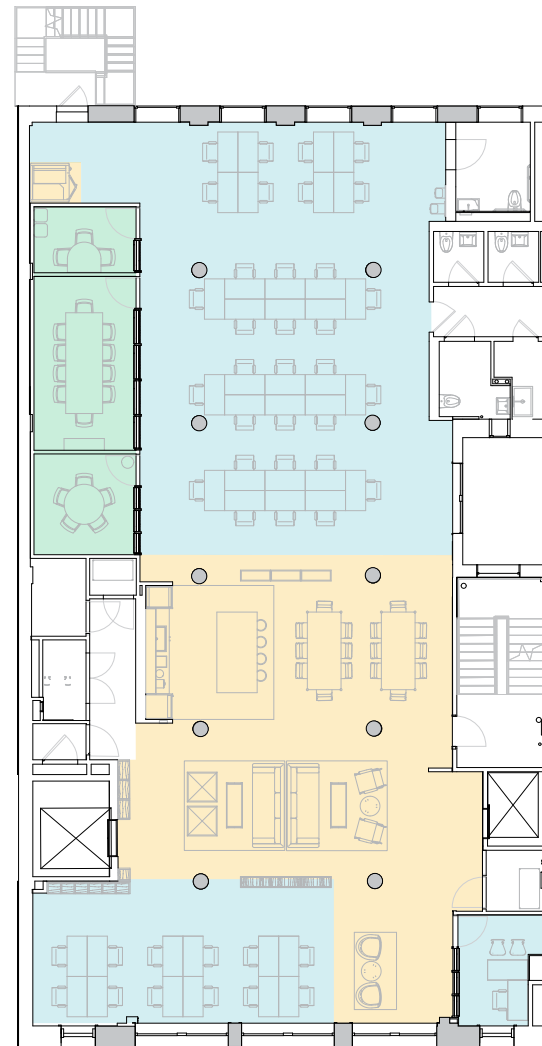
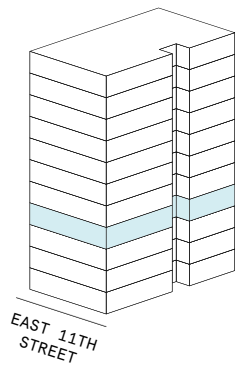
MEETING ROOM(S)

2

SHARED WORKSPACE(S)

LEGEND

- MEETING ROOM
- SHARED WORKSPACE
- DEDICATED SPACE



EAST 11TH STREET



4th Floor

6,111 RSF

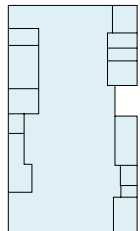
6,111 RSF Suite 04-100

3
MEETING ROOM(S)

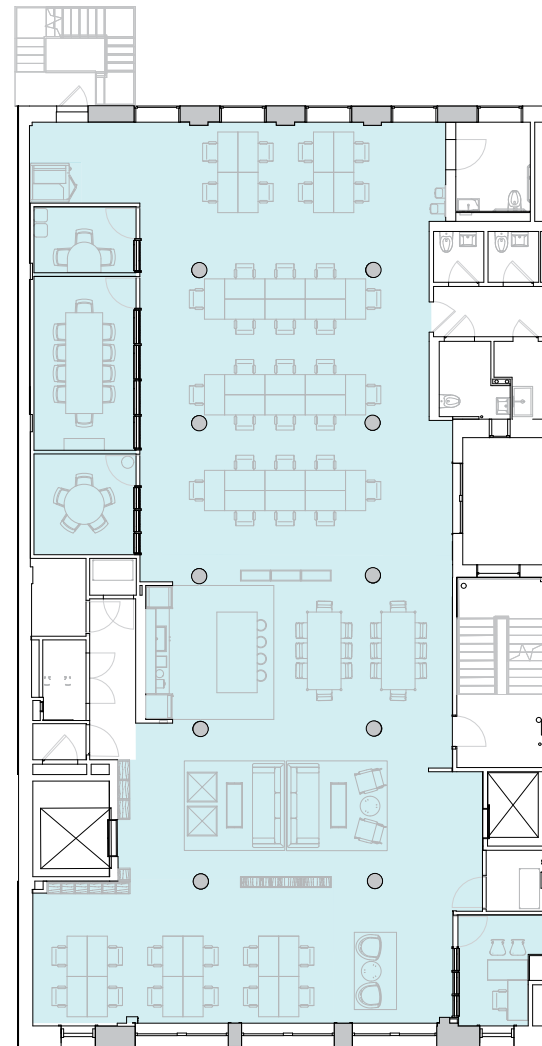
1
PRIVATE OFFICE(S)

LEGEND

 DEDICATED SPACE



EAST 11TH STREET



EAST 11TH STREET

5th Floor

6,111 RSF

3

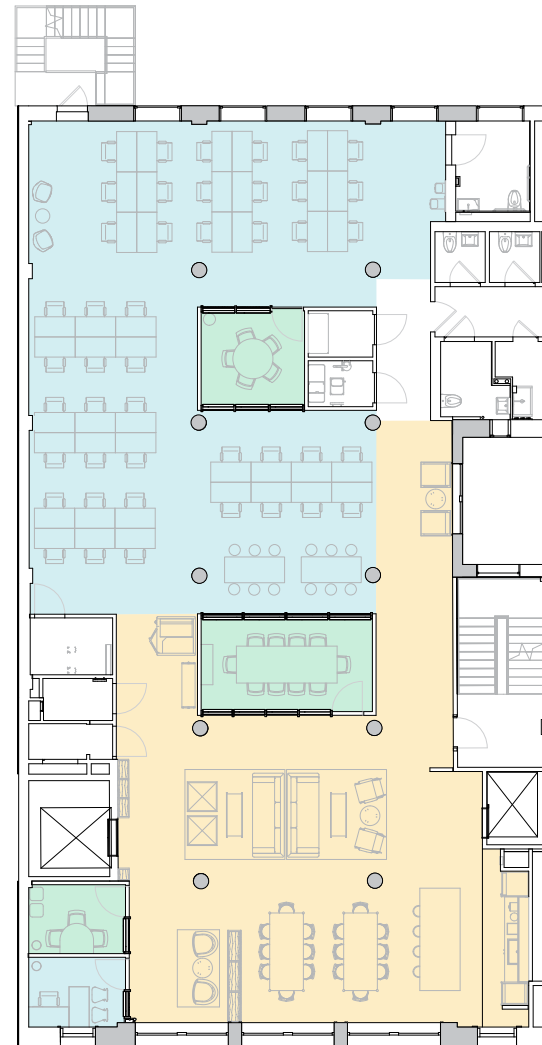
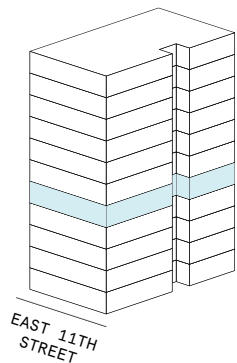
MEETING ROOM(S)

1

SHARED WORKSPACE(S)

LEGEND

- MEETING ROOM
- SHARED WORKSPACE
- DEDICATED SPACE



EAST 11TH STREET

5th Floor

6,111 RSF

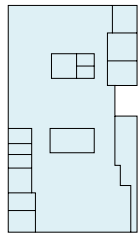
6,111 RSF Suite 05-100

3
MEETING ROOM(S)

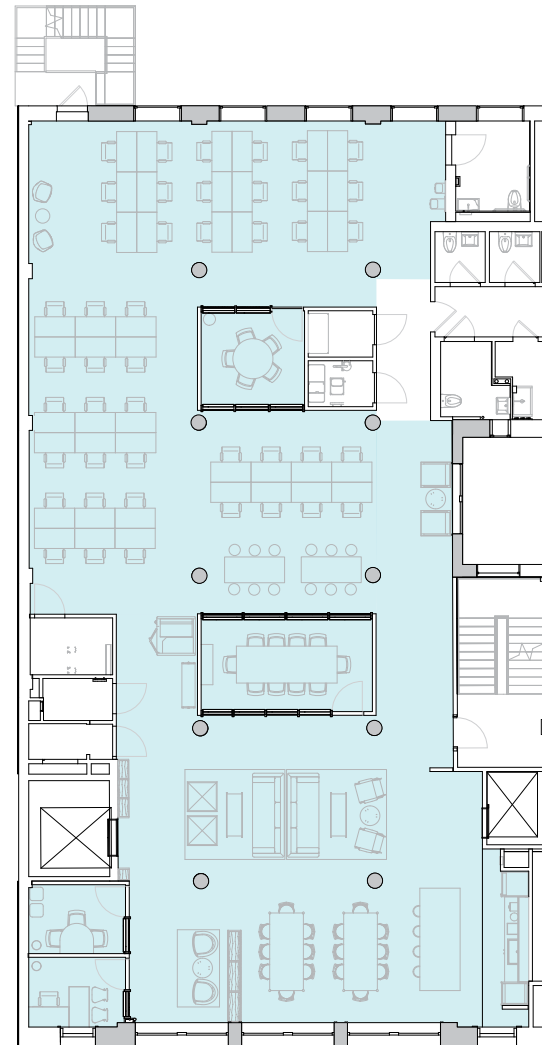
1
PRIVATE OFFICE(S)

LEGEND

 DEDICATED SPACE



EAST 11TH STREET



EAST 11TH STREET

6th Floor

6,111 RSF

3

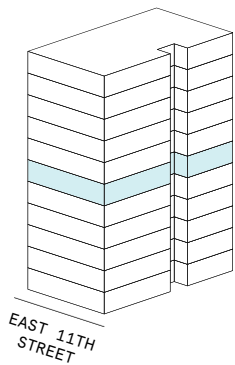
MEETING ROOM(S)

4

SHARED WORKSPACE(S)

LEGEND

- MEETING ROOM
- SHARED WORKSPACE
- DEDICATED SPACE



EAST 11TH STREET

6th Floor

6,111 RSF

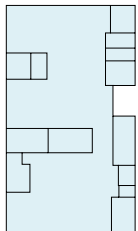
6,111 RSF Suite 06-100

3
MEETING ROOM(S)

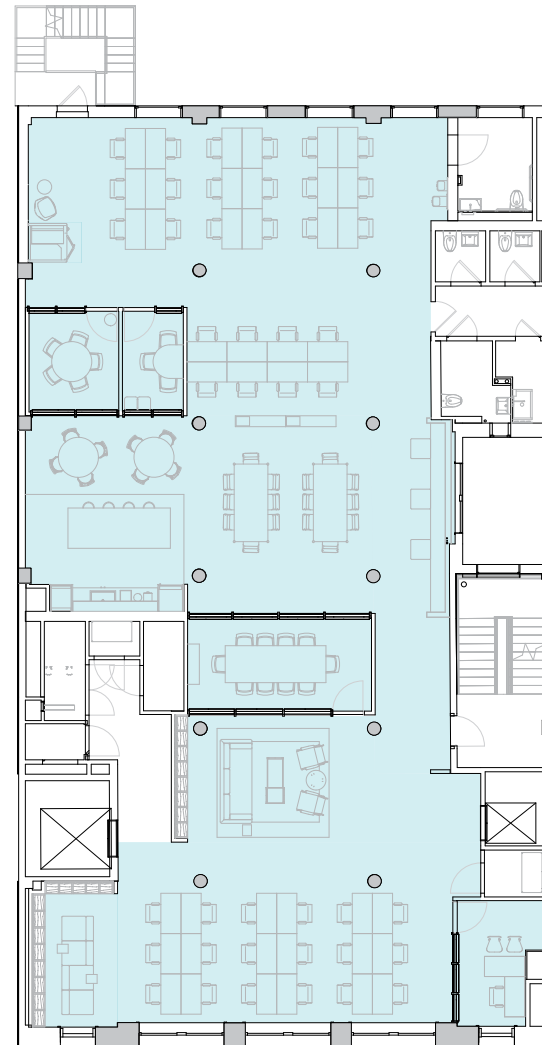
1
PRIVATE OFFICE(S)

LEGEND

 DEDICATED SPACE



EAST 11TH STREET



EAST 11TH STREET

7th Floor

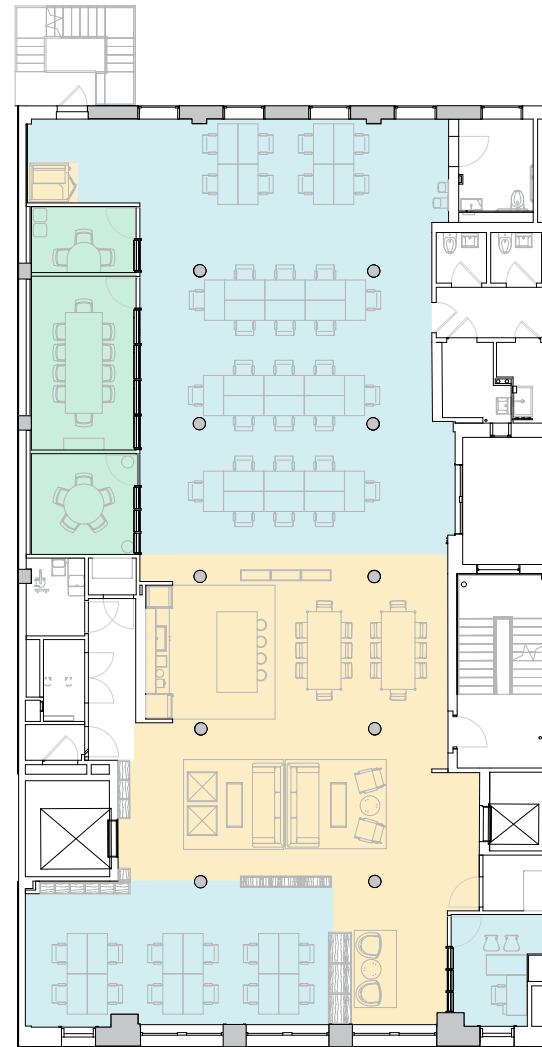
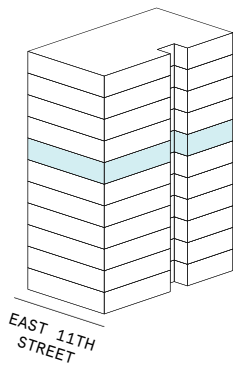
6,111 RSF

3
MEETING ROOM(S)

2
SHARED WORKSPACE(S)

LEGEND

- MEETING ROOM
- SHARED WORKSPACE
- DEDICATED SPACE



EAST 11TH STREET

7th Floor

6,111 RSF

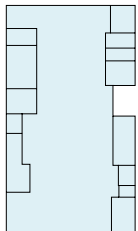
6,111 RSF Suite 07-100

3
MEETING ROOM(S)

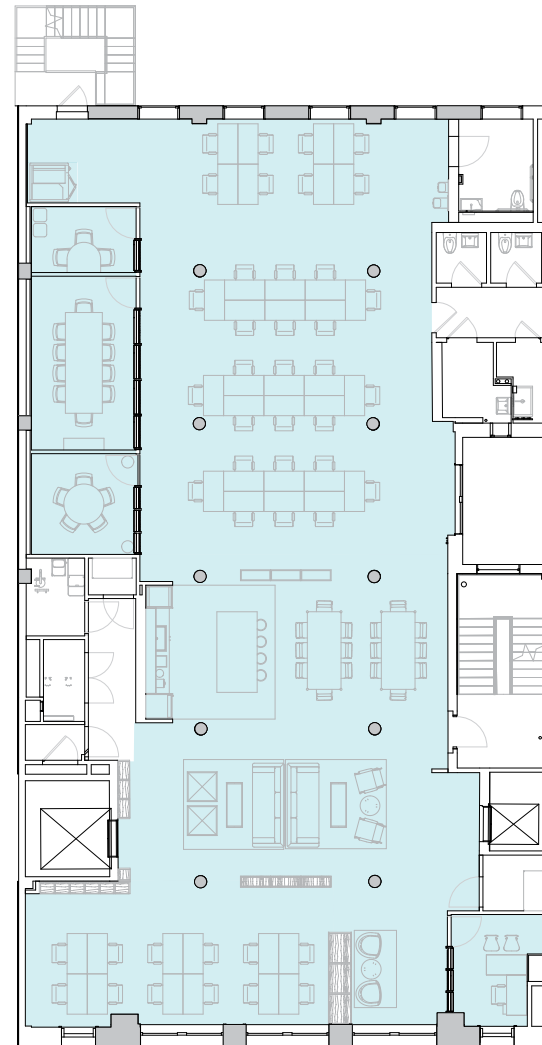
1
PRIVATE OFFICE(S)

LEGEND

■ DEDICATED SPACE



EAST 11TH STREET



EAST 11TH STREET

8th Floor

6,111 RSF

2

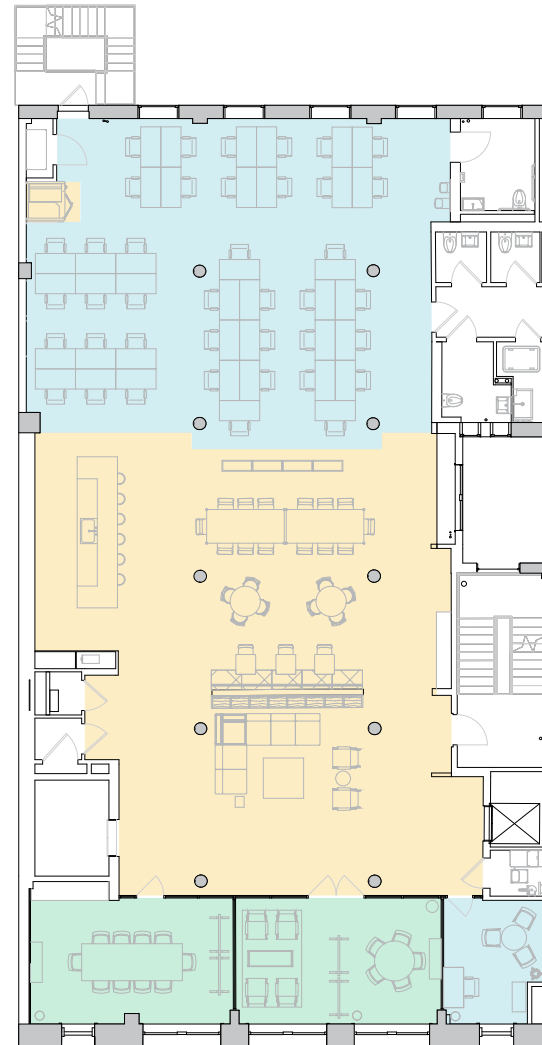
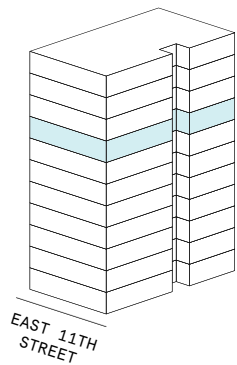
MEETING ROOM(S)

2

SHARED WORKSPACE(S)

LEGEND

- MEETING ROOM
- SHARED WORKSPACE
- DEDICATED SPACE



EAST 11TH STREET



8th Floor

6,111 RSF

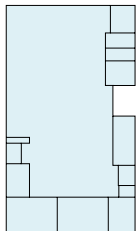
6,111 RSF Suite 08-100

2
MEETING ROOM(S)

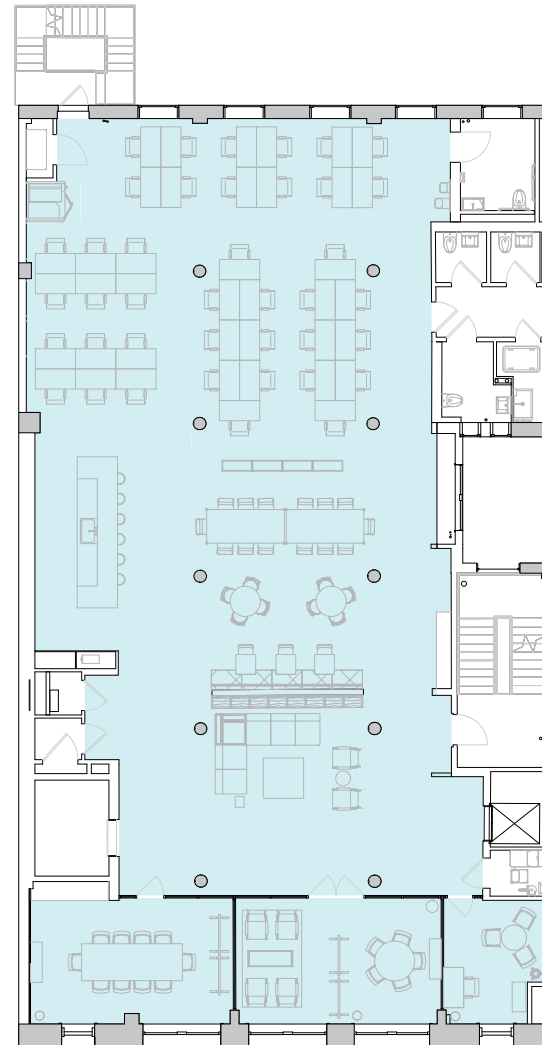
1
PRIVATE OFFICE(S)

LEGEND

 DEDICATED SPACE



EAST 11TH STREET



EAST 11TH STREET

9th Floor

6,111 RSF

3

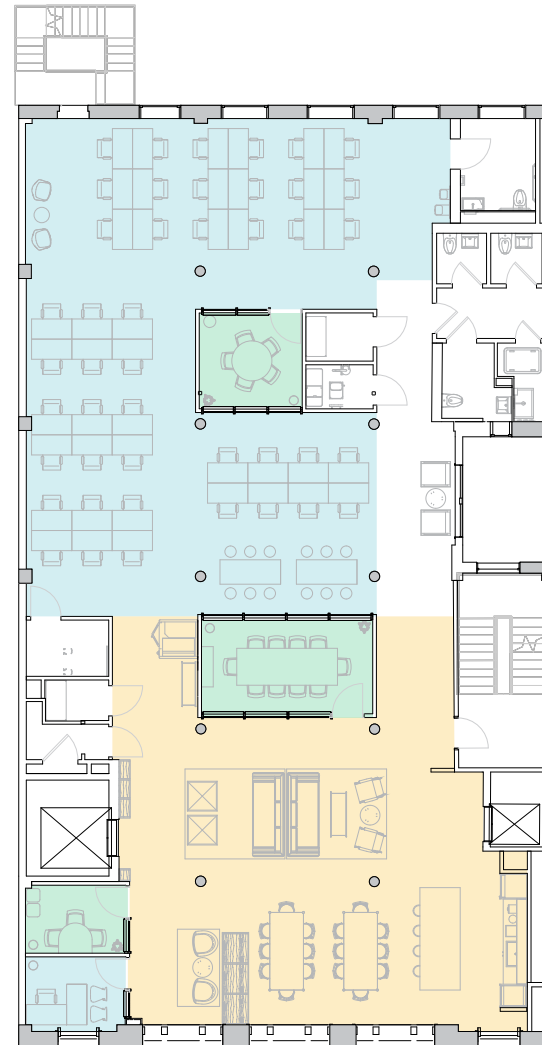
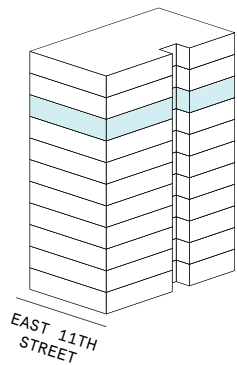
MEETING ROOM(S)

1

SHARED WORKSPACE(S)

LEGEND

- MEETING ROOM
- SHARED WORKSPACE
- DEDICATED SPACE



EAST 11TH STREET



9th Floor

6,111 RSF

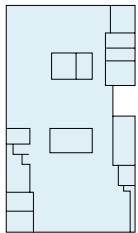
6,111 RSF Suite 09-100

3
MEETING ROOM(S)

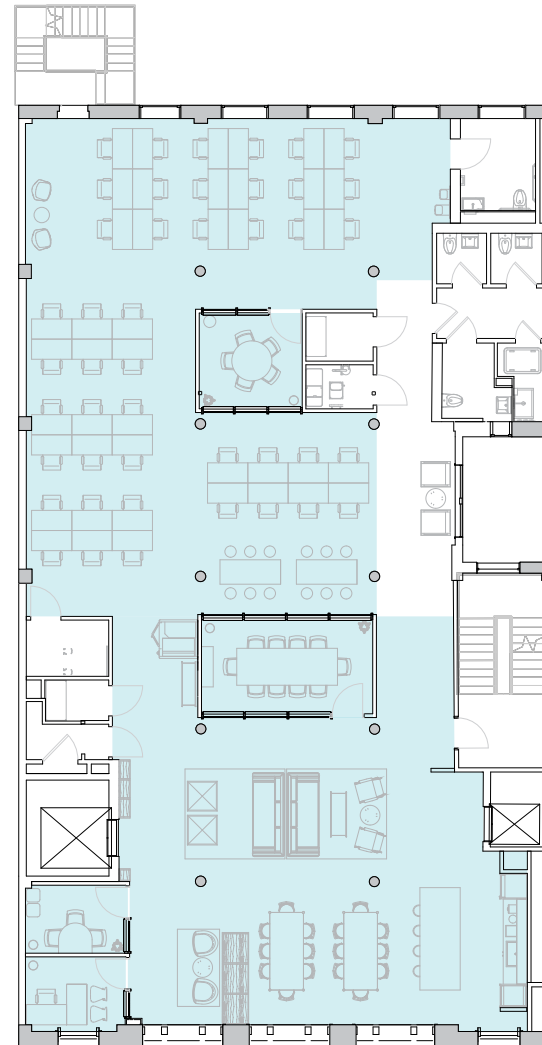
1
PRIVATE OFFICE(S)

LEGEND

 DEDICATED SPACE



EAST 11TH STREET



EAST 11TH STREET

10th Floor

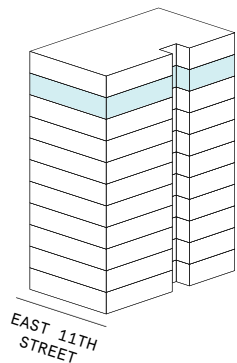
6,111 RSF

4
MEETING ROOM(S)

2
SHARED WORKSPACE(S)

LEGEND

- MEETING ROOM
- SHARED WORKSPACE
- DEDICATED SPACE



EAST 11TH STREET



10th Floor

6,111 RSF

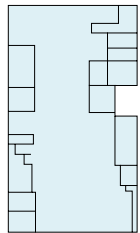
6,111 RSF Suite 10-100

4
MEETING ROOM(S)

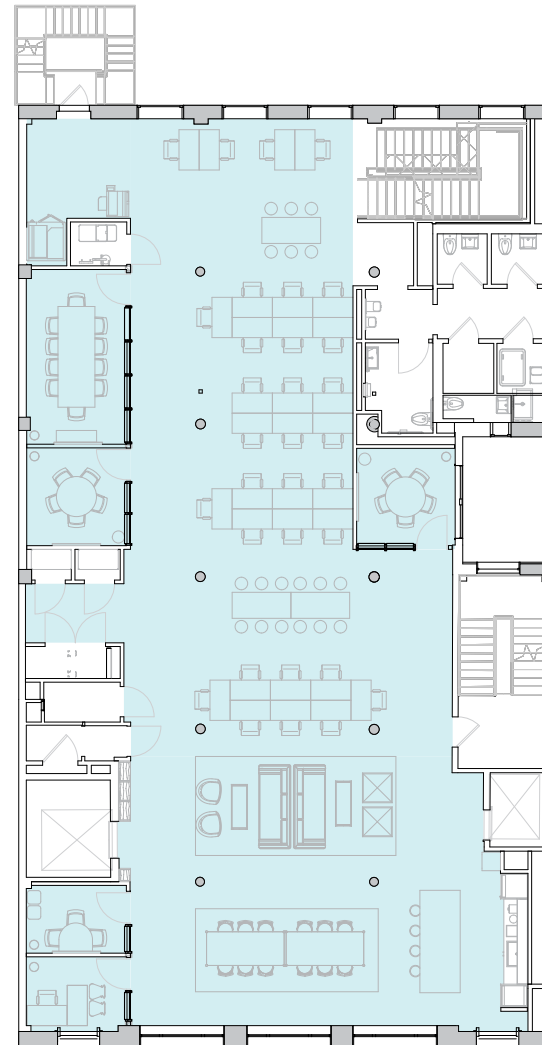
1
PRIVATE OFFICE(S)

LEGEND

 DEDICATED SPACE



EAST 11TH STREET



EAST 11TH STREET

11th Floor

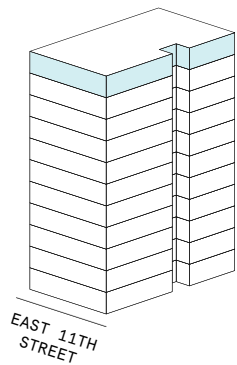
1,843 RSF

2

SHARED WORKSPACE(S)

LEGEND

- MEETING ROOM
- SHARED WORKSPACE
- DEDICATED SPACE



EAST 11TH STREET



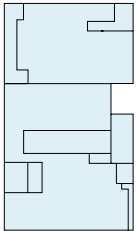
11th Floor

1,843 RSF

1,843 RSF Suite 11-100

LEGEND

 DEDICATED SPACE



EAST 11TH STREET



EAST 11TH STREET

Contact

For leasing inquiries please reach out to our team.



Kevin West

HEAD OF LEASING
KEVIN.WEST@WEWORK.COM
970.390.6184

Jake Sinkovec

SENIOR LEASING DIRECTOR
JACOB.SINKOVEC@WEWORK.COM
262.705.5303

© 2022 WeWork. The WeWork trademark and related logos are the property of WeWork Companies LLC. Any reference to third-party names are for reference and informational purposes only and should not be considered an endorsement or association of WeWork or vice versa. Photographs contained herein may be representative examples of various WeWork locations and do not necessarily depict the WeWork location referenced. While reasonable efforts have been made to check the accuracy of the information contained here, WeWork, its officers, employees, directors, and representatives, make no warranty, express or implied, regarding the accuracy of the information and disclaim any liability arising from the use of the information contained herein. All dimensions are approximate and subject to variances. It is your obligation to independently verify the particulars of the property. WeWork reserves the right to make changes.