

EXECUTIVE SUMMARY



SALE OVERVIEW

Price	\$125,000.
Parcel ID	00005837
City	Cameron
Square Feet	2,220 SF
Built	1874-1878
Zoning	HB
Book/Page	4854/476
2019 Taxes	\$459.33

This historical building was home to freight and a passenger train depot station for Raleigh & Augusta railroad, built between 1874 - 1878, Seaboard took over in 1900 and moved to current location in 1980 and has been currently remodeled. The building housed the 1st telephone system for Moore County.

Constructed of hand-hewn oak, with wooden pegs, and six-inch thick floor boards, the Depot features a vaulted, beamed ceiling and five massive sliding cargo doors (all in working order.) The building dimensions are 60' x 30', consisting of a 40' x 30' main room, two back rooms 14' x 18' and 9' x 9', plus two restrooms. The original exterior wooden wall panels were covered with shingles at some point. Two sets of original wooden mail/timetable slots remain, as well as the original ceramic telegraph insulators, and outside signal lights.

for more information

George Manley

Principal / NC Broker

O: 910.684.5353

C: 910.603.8395

George@bellmanley.com

Holly Bell

Principal / NC Broker

O: 910.684.5353

C: 910.690.1065

Holly@bellmanley.com

HISTORY

History of Property

Renovation began in 2017 with the installation of a new Galvalume metal roof. A six-foot deck was constructed around the entire building, complete with two sets of steps, a handicap ramp, and cast-iron handrails. A new electrical meter was installed, as well as new wiring, outlets, lights, and ceiling fans. The entire building exterior was painted, including the soffit and cargo doors. A set of French doors was installed outside of the two front facing cargo doors. The two back rooms were completely remodeled with new ceilings, some drywall, windows, interior and exterior doors, lights, ceiling fan, and tile floors. Plumbing components added include a new commercial 100 gallon water heater, ¾" copper lines, shut-off valves and new toilets. A new water meter has been installed, though a line will need to be run from the meter to the building. The building does not have an HVAC system.

The Raleigh and Augusta Railroad reached Cameron in 1874, and the Depot is believed to have been constructed between 1875 and 1878 though no documentation has been found to confirm. In 1900, after several railroad mergers, the Depot served the Seaboard Air Line Railway and several years later the Seaboard Coast Line Railroad. The mail and telegraph for the town operated out of the Depot, and the first telephone system for the county began operating in 1881 when lines were run from the North Carolina Millstone Company in the north Moore County town of Parkewood (no longer in existence) to the Depot. (For reference, the town of Southern Pines didn't have telephone service until 1898, and Carthage had none until 1902.) The Cameron Historic District was added to the National Register of Historic Places in 1983, and the Depot was listed as a "contributing" structure, though no restrictions have been placed on updates to the building.

for more information

George Manley

Principal / NC Broker

O: 910.684.5353

C: **910.603.8395**

George@bellmanley.com

Holly Bell

Principal / NC Broker

O: 910.684.5353

C: **910.690.1065**

Holly@bellmanley.com

PHOTOS



for more information

George Manley

Principal / NC Broker

O: 910.684.5353

C: 910.603.8395

George@bellmanley.com

Holly Bell

Principal / NC Broker

O: 910.684.5353

C: 910.690.1065

Holly@bellmanley.com

PHOTOS



for more information

George Manley

Principal / NC Broker

O: 910.684.5353

C: **910.603.8395**

George@bellmanley.com

Holly Bell

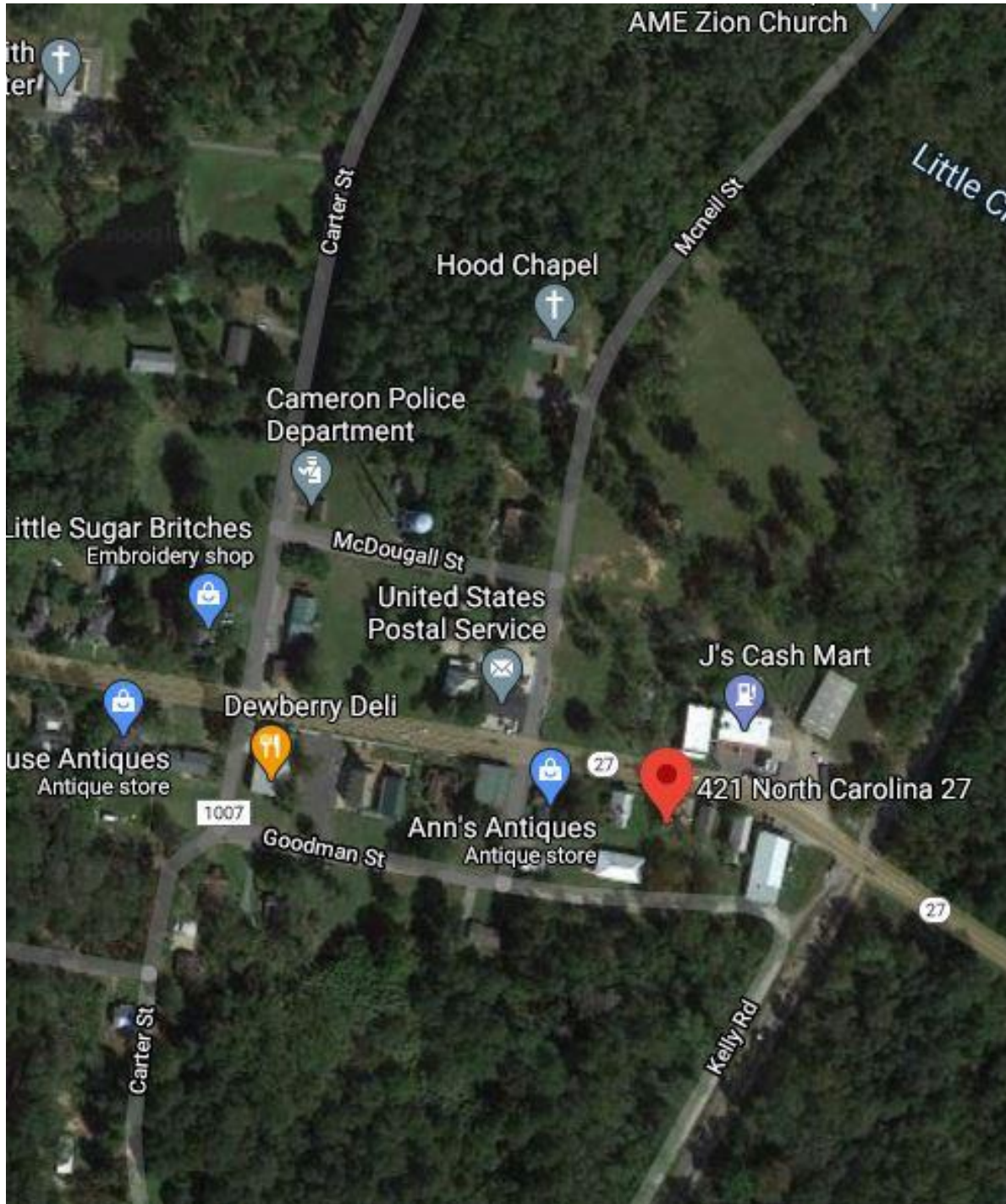
Principal / NC Broker

O: 910.684.5353

C: **910.690.1065**

Holly@bellmanley.com

AERIAL MAP



for more information

George Manley

Principal / NC Broker

O: 910.684.5353

C: 910.603.8395

George@bellmanley.com

Holly Bell

Principal / NC Broker

O: 910.684.5353

C: 910.690.1065

Holly@bellmanley.com