

555

NORTH 18TH STREET

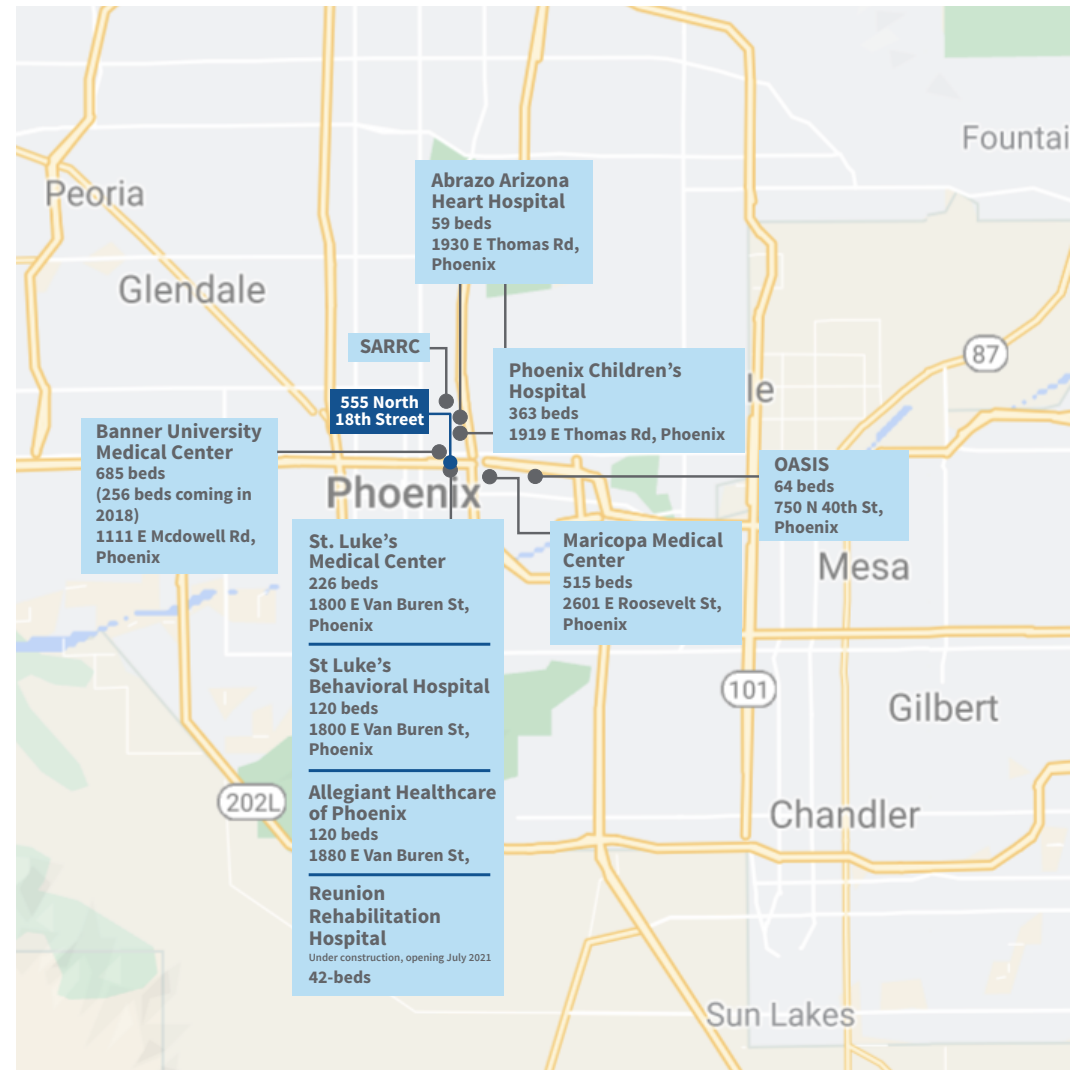
ST. LUKE'S MEDICAL OFFICE BUILDING

ONLY FREESTANDING MEDICAL OFFICE
BUILDING ON A 4 HOSPITAL CAMPUS



ABOUT THE BUILDING:

- Anchored by Maricopa County Community College District's GateWay Community College's Nursing Program
- Under new ownership with Orbvest, a global medical office real estate investor
- 5/1,000 Parking Ratio
- Within 5 minutes of the Phoenix Biomedical Campus, including the university of Arizona's College of Medicine, Arizona State University's Bioinformatics Program, Northern Arizona University's College of Health and Human Services, and the Transitional Genomics Research Institute
- Several top-tier hospitals along the corridor, including Phoenix Children's Hospital, Banner University Medical Center, Maricopa Medical Center (Valleywise) and Abrazo Heart Hospital
- Within immediate proximity to Intertate-10, the Loop 202 Highway, and the State Route 51 Highway

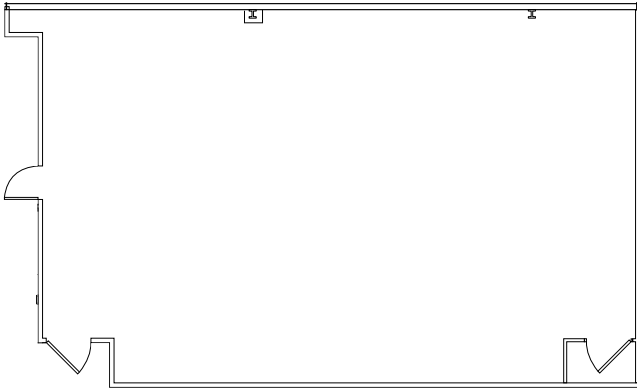


ST. LUKE'S MEDICAL OFFICE BUILDING

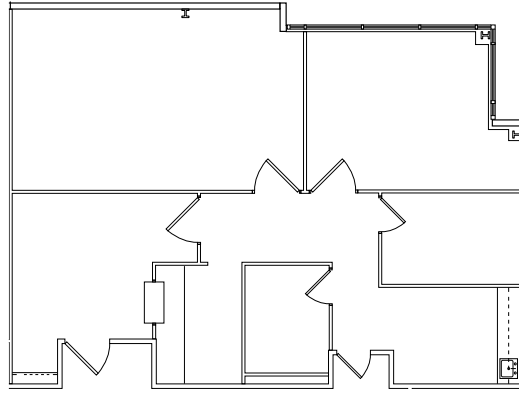
555 N. 18th Street, Phoenix, Arizona 85006

Availabilities

Suite 105 - 2,030 SF*
(*contiguous to 3,671 SF)



Suite 107 - 1,641 SF*
(*contiguous to 3,671 SF)



Base Rent:

\$21.00 NNN

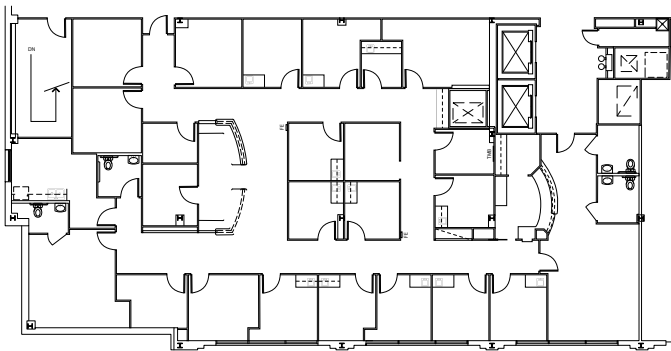
Tenant Improvements:

Negotiable

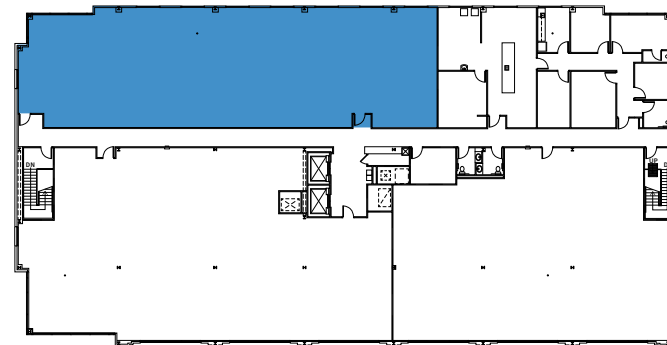
Parking:

5/1,000

Suite 300 - 5,429 SF
(built-out medical)



Suite 305 - 4,351 SF
(former dental clinic)



Year Built:

2006

 [Click site plan for virtual tour](#)



New Senior's
Housing

Phoenix Children's
Hospital

St. Luke's Medical
Center

SR51

10

51

202 Loop 202

555 North
18th Street
3 Stories

New parking

New roadway

555

NORTH 18TH STREET

ST. LUKE'S MEDICAL OFFICE BUILDING

For more information please contact:

Katie McIntyre

Vice President
+1 602 282 6357
katie.mcintyre@jll.com

Mari Lederman

Vice President
+1 602 282 6325
mari.lederman@jll.com

Jenn Startin

Project Coordinator
+1 602 282 6356
jennifer.startin@jll.com

jll.com/phoenix

[@jllphoenix](https://twitter.com/jllphoenix)

602 282 6300

phoenixblog.jll.com

Although information has been obtained from sources deemed reliable, neither Owner nor JLL makes any guarantees, warranties or representations, express or implied, as to the completeness or accuracy as to the information contained herein. Any projections, opinions, assumptions or estimates used are for example only. There may be differences between projected and actual results, and those differences may be material. The Property may be withdrawn without notice. Neither Owner nor JLL accepts any liability for any loss or damage suffered by any party resulting from reliance on this information. If the recipient of this information has signed a confidentiality agreement regarding this matter, this information is subject to the terms of that agreement. ©2018 Jones Lang LaSalle IP, Inc. All rights reserved. Jones Lang LaSalle Americas, Inc. License #: CO508577000

