



Shops at Camp Lowell

NWC Camp Lowell & Swan, Tucson, AZ

Property Highlights

- High daytime population
- Located on Swan Road, a major north/south corridor connecting the affluent Foothills with Midtown Tucson



Traffic Counts



E Camp Lowell Road
24,169 VPD



Swan Road
30,642 VPD

We obtained the information above from sources we believe to be reliable. However, we have not verified its accuracy and make no guarantee, warranty or representation about it. It is submitted subject to the possibility of errors, omissions, change of price, rental or other conditions, prior sale, lease or financing, or withdrawal without notice. We include projections, opinions, assumptions or estimates for example only, and they may not represent current or future performance of the property. You and your tax and legal advisors should conduct your own investigation of the property and transaction.

2900 N Swan Rd, Suite 200
Tucson, Arizona
+1 520 326 2200
naihorizon.com



Suite A-103-105: ±3,025 SF End Cap Restaurant Space



Suite A-103-105: ±3,025 SF End Cap Restaurant Space



Well established, long-time tenants

DAVE DUTSON

+1 520 241 1160
dave.dutson@naihorizon.com

2900 N Swan Rd, Suite 200
Tucson, Arizona
+1 520 326 2200
naihorizon.com

NaiHorizon

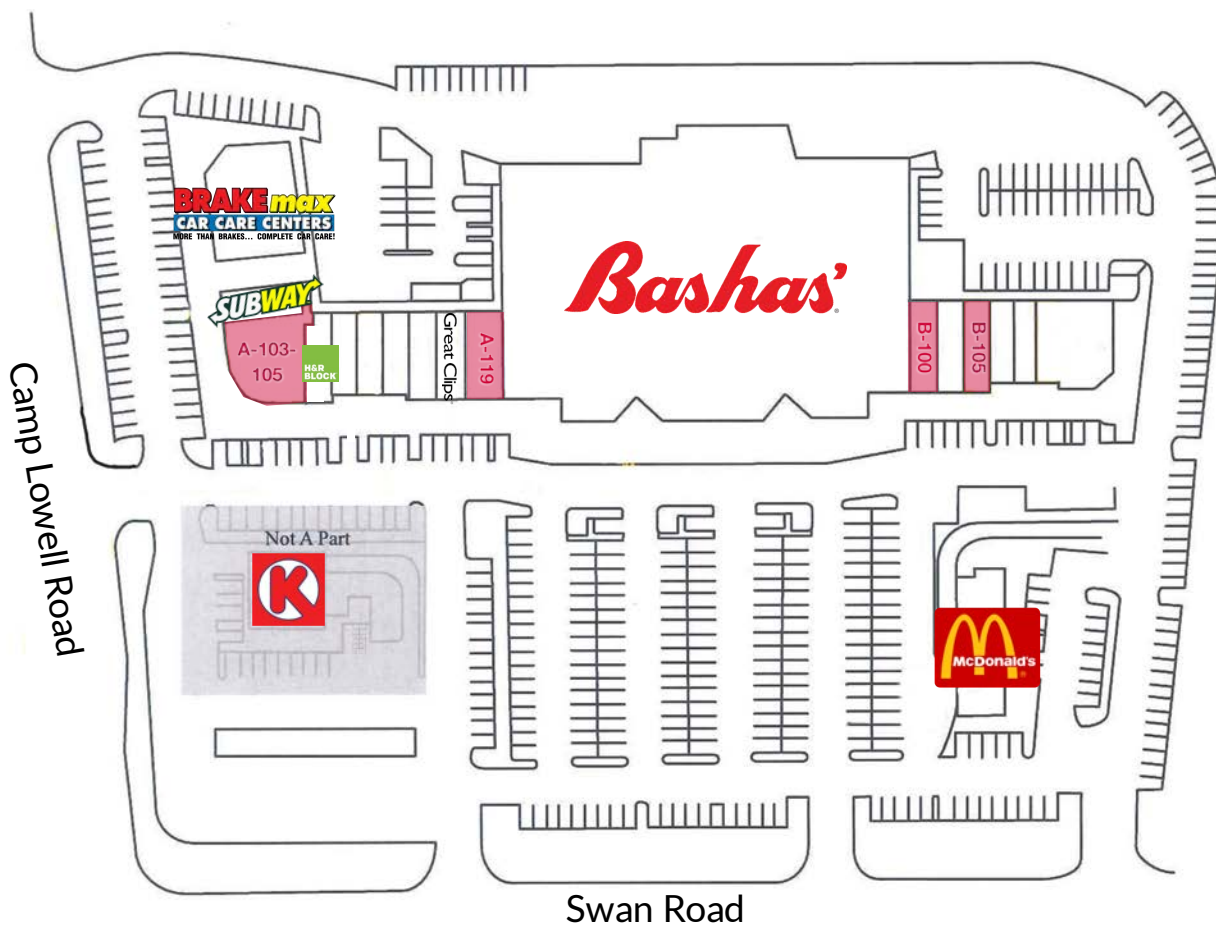
Availabilities

FOR LEASE
Shops at Camp Lowell
NWC Camp Lowell & Swan

SUITE	SIZE	STATUS	RATE
A-103-105	±3,025 SF	Available	\$24.00/SF, NNN
A-119	± 1,635 SF	Available	\$20.00/SF, NNN

SHOPS

A



SHOPS

B

SUITE	SIZE	STATUS	RATE
SUITE B-100	± 1,150 SF	Available	\$17.00/SF, NNN
SUITE B-105	± 1,200 SF	Available	\$17.00/SF, NNN

DAVE DUTSON
+1 520 241 1160
dave.dutson@naihorizon.com

2900 N Swan Rd, Suite 200
Tucson, Arizona
+1 520 326 2200
naihorizon.com



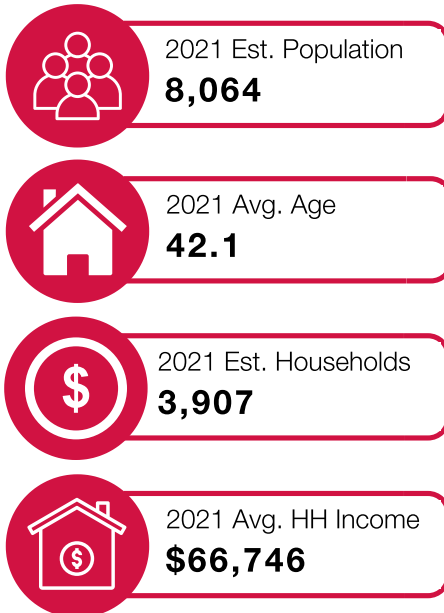
NaiHorizon

Demographics

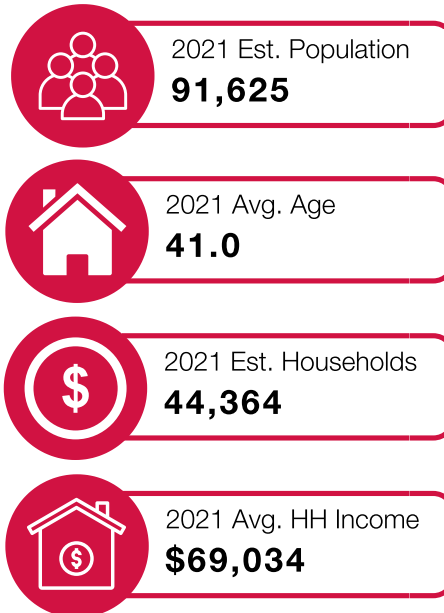
FOR LEASE
Shops at Camp Lowell
NWC Camp Lowell & Swan



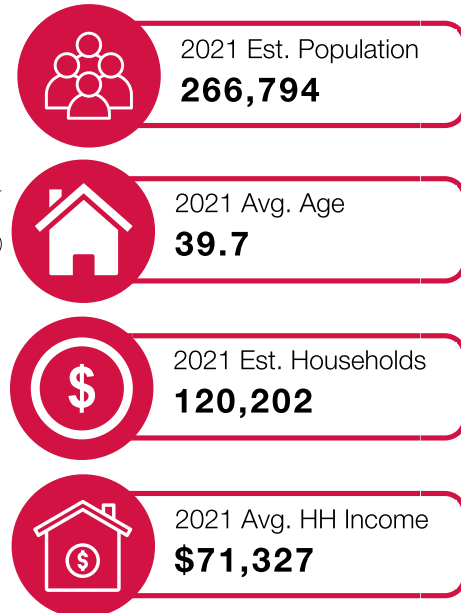
1-Mile Demographics



3-Mile Demographics



5-Mile Demographics



DAVE DUTSON

+1 520 241 1160
dave.dutson@naihorizon.com

2900 N Swan Rd, Suite 200
Tucson, Arizona
+1 520 326 2200
naihorizon.com