



FOR SALE

SOUTHFIELD DDA DEVELOPMENT SITE

ADJACENT TO NEW DEVELOPMENT

16000 W 9 MILE RD & 23100 PROVIDENCE DR, SOUTHFIELD, MI



P.A. COMMERCIAL
Corporate & Investment Real Estate

CONTENTS

INVESTMENT SNAPSHOT 03

EXECUTIVE SUMMARY 04

MARKET OVERVIEW + LOCATION 05

SITE PLAN 08

PROPERTY PHOTOS + FLOOR PLANS 09

DEMOGRAPHICS 17

CONTACT US 19

OFFERED EXCLUSIVELY BY:



MATT SCHIFFMAN
CEO/Managing Member

D: 248.281.9907
matt@pacommercial.com



MIKE GUNN
Senior Associate

D: 248.331.0202
C: 248.924.7499
mike@pacommercial.com

INVESTMENT SNAPSHOT



LARGE, FLEXIBLE SITE WITH EXISTING 151,563 SF STRUCTURE

The existing office building provides a potential adaptive reuse opportunity or cost-efficient demolition and ground-up development. Its footprint and site size allow for efficient planning, parking, and site design to support a wide range of development concepts.



PRIME LOCATION WITHIN A GROWING MIXED-USE DISTRICT

Located in Southfield's Downtown Development Authority District, this property benefits from substantial municipal focus on revitalization and economic development. The site is directly across from Henry Ford Providence Southfield Hospital and the 100-acre Northland City Center redevelopment.



SIGNIFICANT REDEVELOPMENT POTENTIAL ACROSS ASSET CLASSES

With flexible B-3 zoning and city support for creative reuse, the 5.8-acre site is ideal for medical, multi-family, hotel, mixed-use, senior living, or institutional redevelopment. The size and flexibility offer developers a blank canvas to capitalize on current demand drivers in the region.



SURROUNDED BY DEMAND DRIVERS AND NEW DEVELOPMENT

With over 1,500 new residential units under construction or recently completed nearby, the area is rapidly attracting new residents. Immediate access to medical institutions, higher education, and retail amenities further supports long-term demand for various uses on-site.



ESTABLISHED INFRASTRUCTURE AND ACCESSIBILITY

The site offers existing utilities, road access, and close proximity to M-10 (Lodge Freeway) and I-696, ensuring strong regional connectivity. Its central location within metro Detroit enhances its appeal for employers, residents, and visitors alike.



POTENTIAL FINANCIAL INCENTIVES

Developers may be eligible for several financial incentive programs offered by the State of Michigan and Southfield's Downtown Development Authority (DDA), enhancing project feasibility and potential returns and revitalization.

EXECUTIVE SUMMARY

PROPERTY OVERVIEW

This is an excellent investment opportunity with significant financial upside potential through redevelopment. Current B-3 zoning and potential use flexibility from the City of Southfield should allow for various uses that will maximize the physical and financial potential of the property - including a medical facility, multi-family development, hotel, mixed-use development, etc. Surrounding this property, several new apartment buildings are up and pre-leased which will be the initial anchor for more new mixed-use products to come. The State of Michigan (through the Michigan Economic Development Corporation) has several tax incentive programs that will provide a developer financial assistance for a re-development.

LOCATION OVERVIEW

Located within the City of Southfield's Downtown Development Authority District and across the street from Henry Ford Providence Southfield Hospital, Oakland Community College, and the 100-acre Northland City Center mixed-use development. Close proximity to M-10 (The Lodge Freeway) and I-696. This site is surrounded by ample retail, restaurants, amenities, and new housing developments for over 1,500 units.

INVESTMENT HIGHLIGHTS

- Located in Southfield DDA District
- Two buildings totaling 151,563 SF on a 5.8-acre site
- Opportunity to redevelop into medical, multi-family, mixed-use, etc
- Across from Henry Ford Providence Southfield Hospital
- Close to Oakland Community College Southfield Campus
- Near 100-acre, \$285M Northland City Center Mixed-use Development
- Quick access to The Lodge Freeway (M-10) and I-696

PROPERTY INFORMATION

ADDRESS	16000 W 9 Mile Rd 23100 Providence Dr Southfield, MI 48075
TYPE	Office Redevelopment Opportunity
NUMBER OF BUILDINGS	2
TOTAL BUILDING SIZE	151,563 SF
ZONING	B-3
TOTAL LAND SIZE	5.8 Acres
TENANCY	Multiple
OCCUPANCY	0%
CONSTRUCTION	Steel
YEAR BUILT/RENOVATED	1967 & 1969 / 2000
PARKING SPACES	644
TRAFFIC COUNT	22,958 VPD
MARKET	Detroit
SUBMARKET	Southfield
LOCATION TYPE	Urban
DISTANCE TO AIRPORT	27 Miles
SALE PRICE	\$7,000,000
PRICE PER SF	\$46.19

MARKET OVERVIEW

Southfield, Michigan is a diverse and thriving business hub within metro Detroit, offering a strong labor pool, pro-business climate, ongoing redevelopment projects, and excellent accessibility, making it a prime location for investment and long-term economic growth.

DEMOGRAPHICS

Southfield is a thriving suburb of metro Detroit, known for its diverse population and strong residential base. Southfield's population of 72,000 residents includes a balanced mix of young professionals, families, and retirees, creating demand for a wide range of housing, retail, healthcare, and lifestyle amenities.

EMPLOYMENT

Southfield serves as one of metro Detroit's primary employment hubs, home to over 100 Fortune 500 companies, a wide array of corporate headquarters, and a diverse mix of businesses ranging from automotive and advanced manufacturing to healthcare, education, and professional services. Southfield's "Golden Triangle" office market—centered around the intersection of Northwestern Highway, Telegraph Road, and Civic Center Drive—has long been a draw for companies seeking a central, accessible location in southeast Michigan.

ECONOMY

Southfield's economy is supported by a diverse industry base, helping the city remain resilient in shifting economic conditions. The area benefits from ongoing public and private investments, particularly in the Northland City Center redevelopment and within the city's Downtown Development Authority (DDA). Southfield's pro-business climate, coupled with incentive programs from the Michigan Economic Development Corporation (MEDC) and Southfield's Economic Development Department, continues to attract new businesses, developers, and investors.

WITHIN 5 MILES OF SUBJECT:



363,825
POPULATION



155,565
HOUSEHOLDS



\$82,098
AVERAGE
HOUSEHOLD INCOME



\$185,431
MEDIAN
HOME VALUE

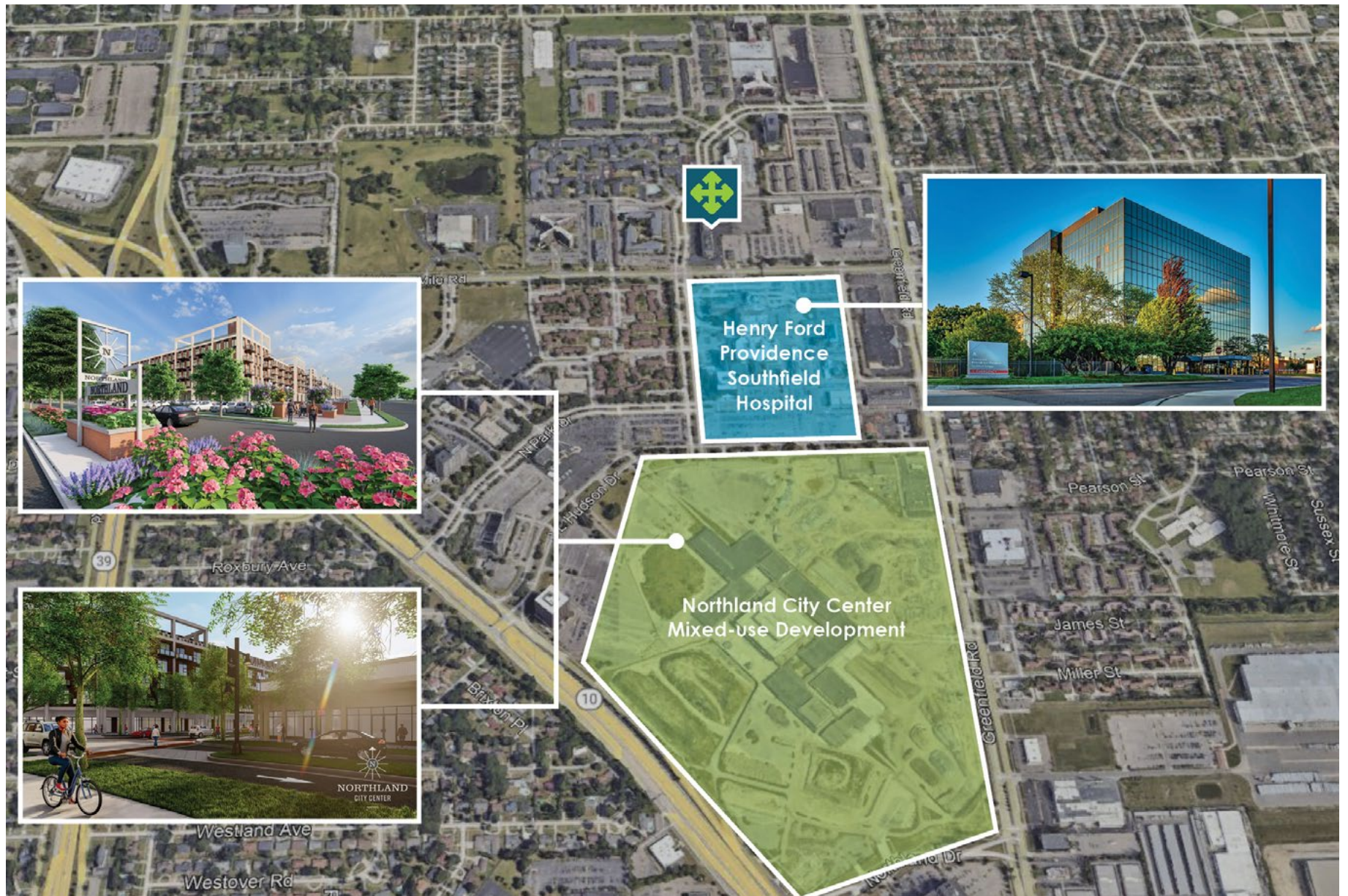


39
MEDIAN AGE



\$4.2B
TOTAL SPECIFIED
CONSUMER SPENDING

ADJACENCY TO DEVELOPMENT



SITE PLAN



NORTH BUILDING
89,748 SF
4 STORIES
3.69 Acre Site

TOTAL SITE:
5.8 ACRES

SOUTH BUILDING
61,815 SF
6 STORIES
2.11 Acre Site

AERIAL PHOTO



9 16000 W 10 MILE RD & 23100 PROVIDENCE DR, SOUTHFIELD, MI 48076

OFFERED EXCLUSIVELY BY P.A. COMMERCIAL

23100 PROVIDENCE DR, SOUTHFIELD, MI

BUILDING PHOTOS



10 16000 W 10 MILE RD & 23100 PROVIDENCE DR, SOUTHFIELD, MI 48076

OFFERED EXCLUSIVELY BY P.A. COMMERCIAL

FLOOR PLANS



FIRST FLOOR PLAN
23100 Providence 1st Floor



SECOND FLOOR PLAN
23100 Providence 2nd Floor

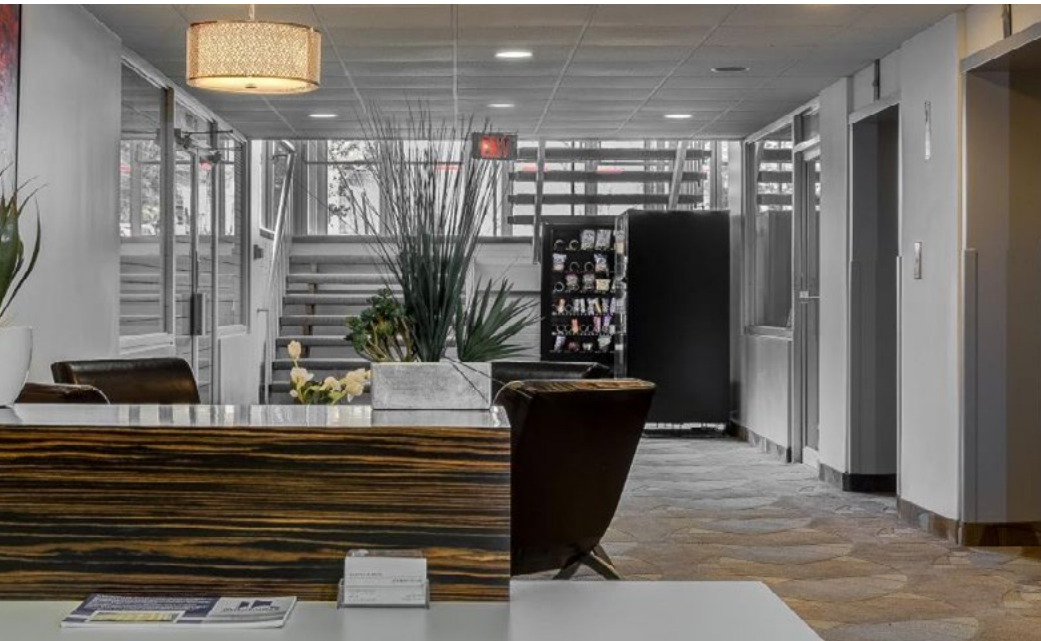
16000 W 9 MILE RD, SOUTHFIELD, MI

BUILDING PHOTOS

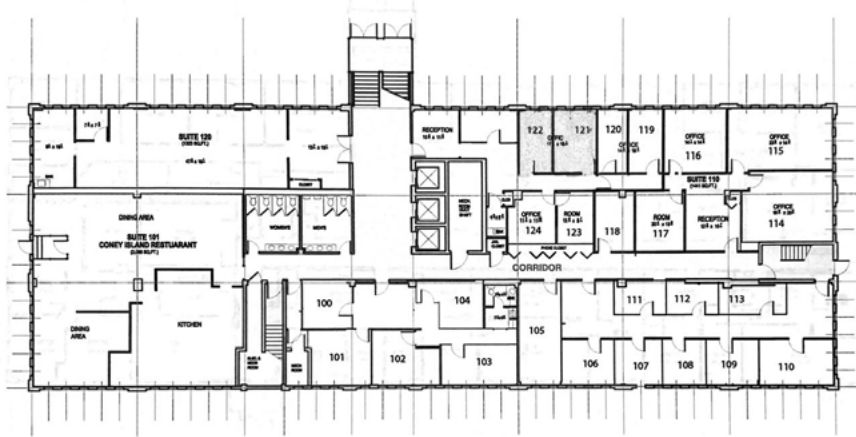


16000 W 9 MILE RD, SOUTHFIELD, MI

INTERIOR PHOTOS



FLOOR PLANS



FIRST FLOOR PLAN
NO SCALE



2nd Floor Plan
NO SCALE



3rd Floor Plan
NO SCALE

FLOOR PLANS



4th Floor Plan
NO SCALE



5th Floor Plan
NO SCALE



6th Floor Plan

AREA DEMOGRAPHICS

	1 MILE	3 MILES	5 MILES
POPULATION			
2024 POPULATION	16,256	133,004	363,825
2029 POPULATION PROJECTION	16,120	130,702	357,606
MEDIAN AGE	41.8	40.3	39.6
BACHELOR'S DEGREE OR HIGHER	32%	30%	34%
WORKDAY POPULATION	16,510	127,514	329,204
HOUSEHOLDS			
2024 HOUSEHOLDS	6,880	54,931	155,565
2029 HOUSEHOLD PROJECTION	6,829	53,984	152,949
OWNER OCCUPIED HOUSEHOLDS	3,328	32,548	91,293
RENTER OCCUPIED HOUSEHOLDS	3,501	21,436	61,656
AVERAGE HOUSEHOLD SIZE	2.3	2.3	2.3
TOTAL SPECIFIED CONSUMER SPENDING	\$168.7M	\$1.4B	\$4.2B
INCOME			
AVG HOUSEHOLD INCOME	\$74,252	\$77,962	\$82,098
MEDIAN HOUSEHOLD INCOME	\$60,603	\$57,309	\$59,380

CONTACT US

For more information, or to schedule a tour of this exciting investment opportunity, please contact the exclusive listing team:



MATT SCHIFFMAN
CEO/Managing Member

D: 248.281.9907
matt@pacommercial.com



MIKE GUNN
Senior Associate

D: 248.331.0202
C: 248.924.7499
mike@pacommercial.com



26555 Evergreen Road, Suite 1500
Southfield, MI 48076

248.358.0100
pacommercial.com



We obtained this information from sources we believe to be reliable. However, we have not verified its accuracy and make no guarantee, warranty or representation about it. It is submitted subject to the possibility of errors, omissions, change of price, rental or other conditions, prior sale, lease or financing, or withdrawal without notice. We include projections, opinions, assumptions or estimates for example only, and they may not represent current, past or future performance of the property. You and your tax and legal advisors should conduct your own investigation of the property and transaction.

**CORPORATE &
INVESTMENT
REAL ESTATE**



P.A. COMMERCIAL
Corporate & Investment Real Estate