

# FORMER WINCHESTER THURSTON NORTH CAMPUS

4225 Middle Road | Allison Park, PA 15101

Hampton Township

<b>Total Land Area</b>	7.25 acres
<b>Buildings</b>	4 structures
<b>Zoning</b>	RA - Residential One Acre (with school variance)
<b>Sale Price</b>	\$1,500,000
<b>Notes</b>	Former school campus



One PPG Place, Suite 1640 | Pittsburgh, PA 15222

412.261.2200 | [HannaLWE.com](http://HannaLWE.com)

**CONTACT**

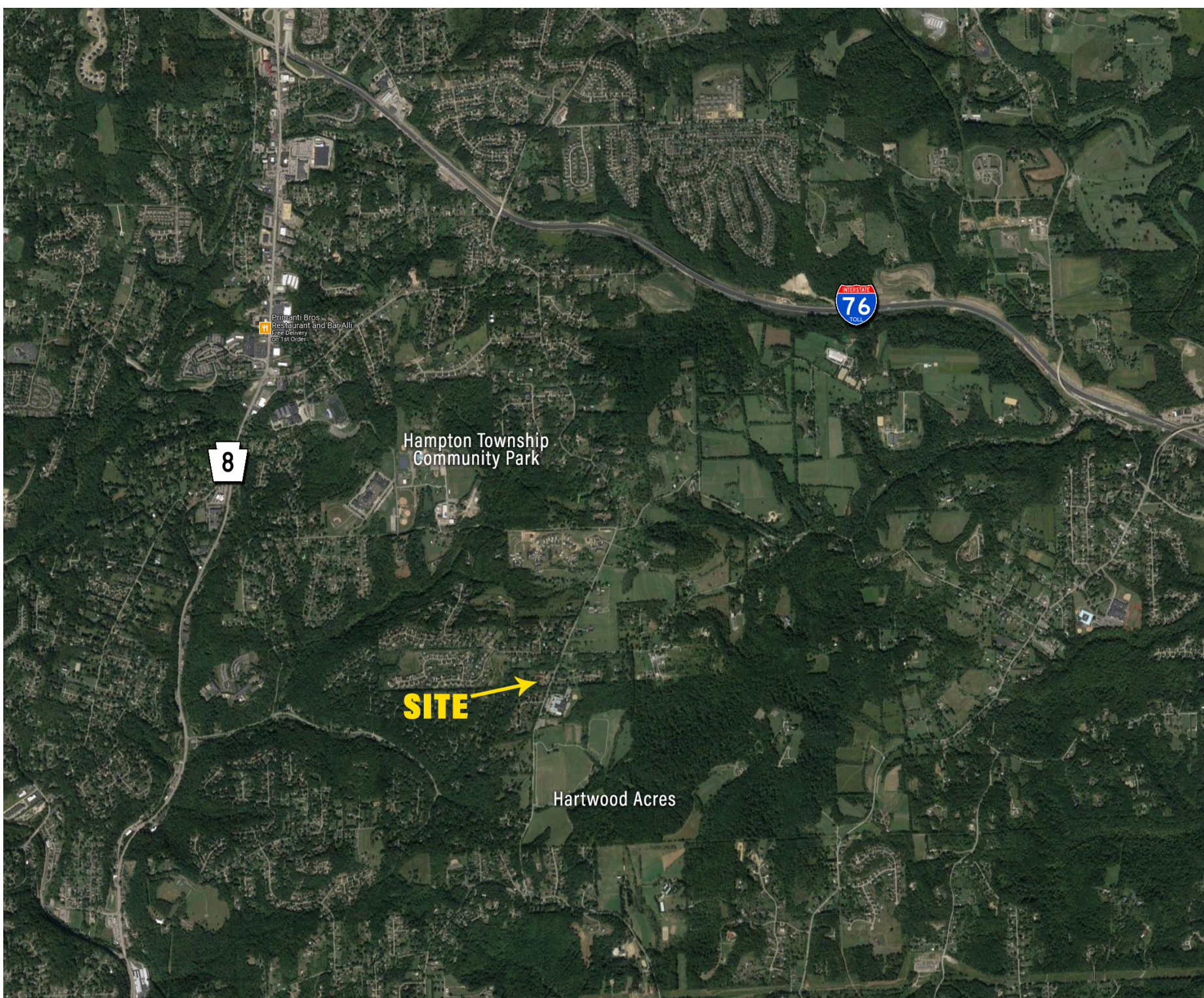
**PORTER SCOTT**

[psscott@HannaLWE.com](mailto:psscott@HannaLWE.com)

412.261.2200

## winchester thurston | overview

Winchester Thurston has its origins in the founding of the all-girls Thurston Preparatory School by Alice M. Thurston in Shadyside in 1887. The Winchester School was founded separately, also in Shadyside, as a coeducational school 1902. The two schools merged to produce the all-girls Winchester Thurston School in 1935. The school moved to its current Shadyside campus, formerly the site of Shady Side Academy, in the fall of 1967. The school added its second Lower School campus in Allison Park in 1988; this campus permanently closed in June 2020. Winchester Thurston became co-educational in 1991.





### Building A - Main Building

- 10,595 SF Total
- Building contains the library, classrooms, and administrative offices.



### Building B - Campus Center

- 5,681 SF Total
- Building contains art and music rooms along with the gymnasium and kitchen.



### Farm House

- 975 SF total
- Fifth grade classrooms



### Pond House

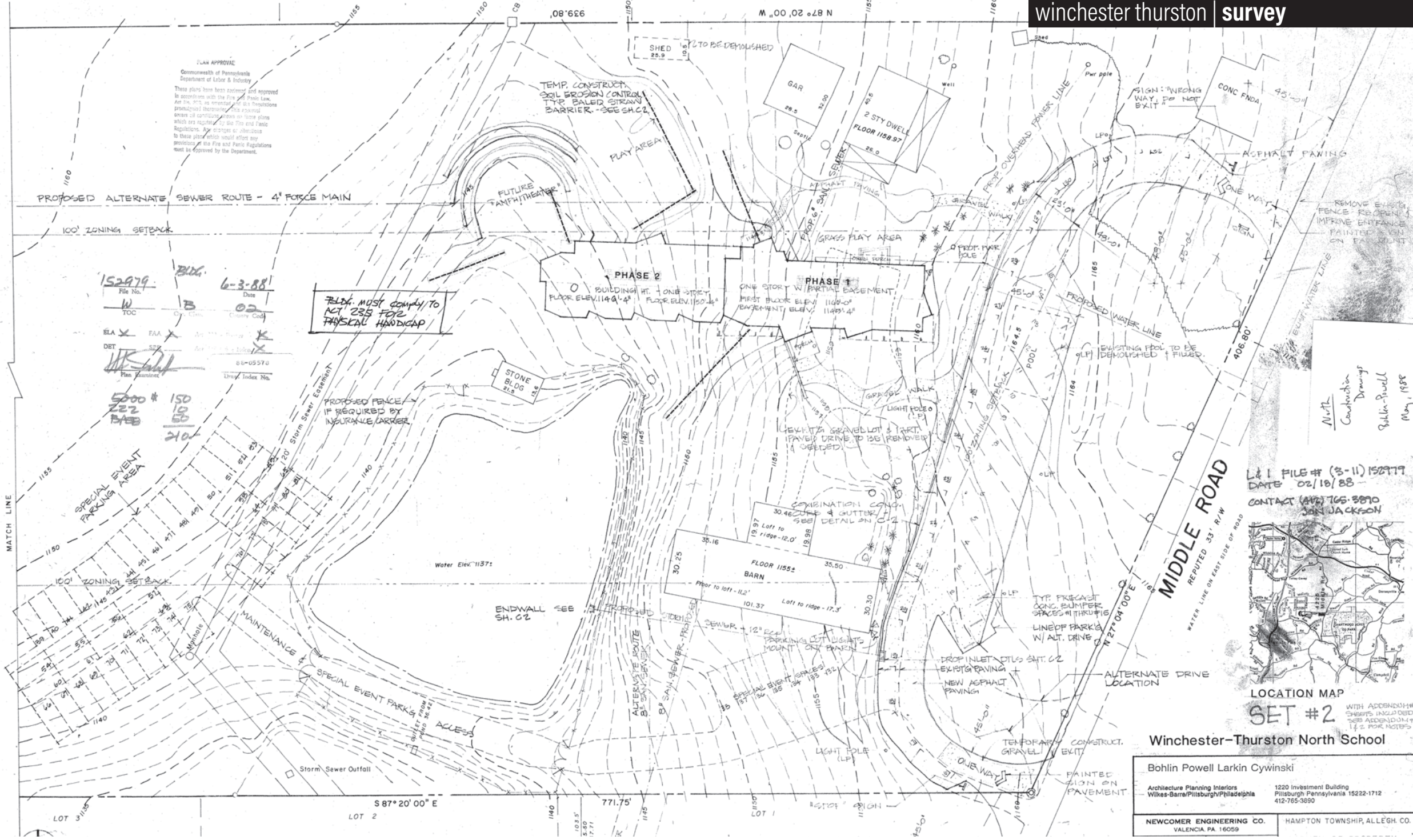
- 220 SF total
- Digital Lab building



CLICK HERE FOR  
VIDEO TOUR

**PLAN APPROVAL**  
 Commonwealth of Pennsylvania  
 Department of Labor & Industry

These plans have been reviewed and approved in accordance with the Fire and Public Law, Act No. 973, as amended and the Regulations promulgated thereunder. This approval covers all construction shown on these plans which are regulated by the Fire and Public Regulations. Any changes or alterations to these plans shall require that any provisions of the Fire and Public Regulations must be approved by the Department.



152979  
 File No.  
 W TOC  
 Date 6-3-88  
 Plan No. B  
 County Code 02  
 Plan No. 88-05570  
 Div. Index No.

**BLDG. MUST COMPLY TO ACT 235 FOR PHYSICAL HANDICAP**

North  
 Conductor  
 Drawings  
 Bohlin-Powell  
 May, 1988

L&I FILE # (3-11) 152979  
 DATE 02/18/88  
 CONTACT (412) 765-3890  
 BOB JACKSON



**Winchester-Thurston North School**

Bohlin Powell Larkin Cywinski  
 Architecture Planning Interiors  
 Wilkes-Barre/Pittsburgh/Philadelphia  
 1220 Investment Building  
 Pittsburgh Pennsylvania 15222-1712  
 412-765-3890

NEWCOMER ENGINEERING CO.  
 VALENCIA, PA. 16059

HAMPTON TOWNSHIP, ALLEGH. CO.

